

Fuse Characteristics

Each fuselink is categorised according to its blowing characteristic.

(FF) - Super Quick Acting (Ultra Rapid). These fuselinks have very low fusing factors and are designed to blow under low current overloads.

(F) - Quick Acting (Quick Blow). For use when a fast blowing time is required under relatively low overloads and when a long and reliable usage is required under full rated conditions.

(M) -Medium Time Lag (Semi-Delay). Fairly rapid blowing under moderate current overloads, combined with some tolerance of moderate transient current surges.

(T) -Time Lag (Antisurge). Capable of withstanding short duration transient currents of considerable magnitude, whilst blowing rapidly under sustained overload conditions.

Breaking Capacity (Interrupting Rating)

This is the maximum short circuit current that the fuselink can safely interrupt under prescribed conditions, usually at rated voltage.

HRC (High Rupture Capacity). Designed with a high current breaking, or rupture, capacity. Usually manufactured with ceramic fuse bodies.

Fuse Sizes

1¼" x ¼" Fuses are normally used in North American markets, and are generally manufactured to UL and CSA standards.

20 x 5mm Fuses are normally used in European markets and are usually manufactured to IEC 127.

Apart from the physical size differences, the current / time characteristics of these fuses are different, and are therefore not interchangeable.

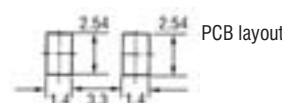
2A	2	0.063	0.16	3216FF2-R	112-3256
2.5A	2.5	0.046	0.14	3216FF2.5-R	112-3258
3A	3	0.037	0.13	3216FF3-R	112-3259
4A	4	0.019	0.11	3216FF4-R	112-3260
4.5A	4.5	0.014	0.1	3216FF4.5-R	112-3261
5A	5	0.013	0.09	3216FF5-R	112-3262

204520

Rating (A)	Order Code	10+	50+	100+	250+	+	+
250mA	112-3250	33.00	30.00	29.00	27.00	--	--
375mA	112-3251	28.00	18.00	18.00	17.00	--	--
500mA	112-3252	28.00	18.00	18.00	17.00	--	--
750mA	112-3253	28.00	18.00	18.00	17.00	--	--
1A	112-3254	28.00	18.00	18.00	17.00	--	--
1.5A	112-3255	28.00	25.00	--	--	--	--
2A	112-3256	20.00	18.00	17.00	16.00	--	--
2.5A	112-3258	20.00	18.00	17.00	16.00	--	--
3A	112-3259	20.00	18.00	17.00	16.00	--	--
4A	112-3260	20.00	18.00	17.00	16.00	--	--
4.5A	112-3261	20.00	18.00	17.00	16.00	--	--
5A	112-3262	20.00	18.00	17.00	16.00	--	--

Very Fast Acting - 451 series

Nanofuse - 125V ac/dc



L=6.10, W=2.54, H=2.54 Supplied on 12mm embossed tape (reel=1K pcs)

- Compact high speed ceramic chip fuses.
- UL Recognised and CSA approved.

Breaking capacity 100A @ 125V ac, 300A @ 125V dc Operating temperature -55°C to +125°C Mfrs. List No. 451 + Value

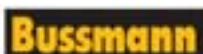
Rating	Order Code	10+	100+	250+	500+	+
62mA	SMD 508-652	58.00	--	--	--	--
125mA	SMD 508-664	60.00	58.00	--	--	--
250mA	SMD 508-676	50.00	46.00	45.00	41.00	--
500mA	SMD 508-688	32.00	31.00	29.00	26.00	--
1A	SMD 508-690	32.00	31.00	29.00	25.00	--
2A	SMD 508-706	31.00	30.00	28.00	25.00	--
3A	SMD 508-718	30.00	29.00	27.00	24.00	--
5A	SMD 508-720	32.00	31.00	30.00	26.00	--
10A	SMD 508-731	31.00	29.00	28.00	24.00	--

FUS243/204438

Surface Mount Fuses

Fast Acting - 3216CP Series

1206 Case Size



- Fast acting protection from excess-current
- Rugged ceramic and glass construction
- Compatible with Reflow and Wave-soldering
- UL Recognised and CSA approved

Voltage rating 24V dc Breaking capacity 35A dc
Time/current characteristics 10 s max @ 250% rated current
1 ms Typ @ 600% rated current

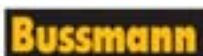
Mfrs. List No. 3216CP + Rating

FUS318/204517

Rating	Order Code	10+	50+	100+	250+	+	+
250mA	968-833	29.00	26.00	24.00	23.00	--	--
375mA	968-845	18.00	17.00	16.00	15.00	--	--
500mA	968-857	18.00	17.00	16.00	15.00	--	--
750mA	968-869	18.00	17.00	16.00	15.00	--	--
1A	968-870	18.00	17.00	16.00	15.00	--	--
1.5A	968-882	23.00	--	--	--	--	--
2A	968-894	18.00	17.00	16.00	15.00	--	--
2.5A	968-900	18.00	17.00	16.00	15.00	--	--
3A	968-912	18.00	17.00	16.00	15.00	--	--
4A	968-924	18.00	17.00	16.00	15.00	--	--
5A	968-948	18.00	17.00	16.00	15.00	--	--

Fast Acting - 3216FF

1206 Case Size



- Metal film and ultrasonic wire bond technologies for high reliability fusing
- Fuse element encapsulated with glass
- UL Recognised and CSA approved

Voltage rating 32V ac/63V dc Breaking capacity 50A ac/dc
Time/current characteristics 100% rated current for 4 hours min.
250% rated current for 5 seconds Max
4A and 5A fuses open within
1s @ 350% rated current

Rating (A)	Device Marking	TYP. Resistance @ 10% rated current (Ω)	Typ voltage Drop @ Rated Current (V)	Mfrs. List No.	Order Code
250mA	.25	4.5	1.4	3216FF250-R	112-3250
375mA	White dot	1.8	0.73	3216FF375-R	112-3251
500mA	.5	1.15	0.66	3216FF500-R	112-3252
750mA	.75	0.75	0.63	3216FF750-R	112-3253
1A	1	0.168	0.2	3216FF1-R	112-3254
1.5A	1.5	0.098	0.18	3216FF1.5-R	112-3255

Order Multiple=10

Rating	Order Code	10+	100+	250+	500+	+
62mA	SMD 992-2121	58.00	--	--	--	--
125mA	SMD 992-2130	56.00	58.00	--	--	--
250mA	SMD 992-2148	50.00	46.00	45.00	41.00	--
500mA	SMD 992-2156	32.00	31.00	29.00	26.00	--
1A	SMD 992-2164	32.00	31.00	29.00	25.00	--
2A	SMD 992-2172	31.00	30.00	28.00	25.00	--
3A	SMD 992-2180	30.00	29.00	27.00	24.00	--
5A	SMD 992-2199	32.00	31.00	30.00	26.00	--
10A	SMD 992-2202	31.00	29.00	28.00	24.00	--

Slow Blow

Nanofuse - 125Vac/dc



L=6.10 B=2.54 H=2.54

Meets IEC 60127-4 standard for Universal Modular Fuse-links, UMF 125V.

Breaking Capacity 50A @ 125V ac or dc Operating Temperature -55°C to 125°C
Mfrs. List No. = 452 + Rating

Order Multiple=10

Rating	Order Code	10+	100+	250+	500+
375mA	SMD 664-698	37.00	35.00	32.00	26.00
500mA	SMD 664-704	38.00	36.00	33.00	27.00
750mA	SMD 664-716	35.00	31.00	30.00	26.00
1A	SMD 664-728	35.00	31.00	30.00	24.00
1.5A	SMD 664-730	35.00	31.00	30.00	26.00
2A	SMD 664-741	35.00	31.00	30.00	26.00
2.5A	SMD 664-753	35.00	31.00	30.00	26.00
3A	SMD 664-765	35.00	31.00	30.00	26.00
3.5A	SMD 664-777	35.00	31.00	30.00	24.00
4A	SMD 664-789	35.00	31.00	30.00	26.00
5A	SMD 664-790	35.00	31.00	30.00	24.00

204461