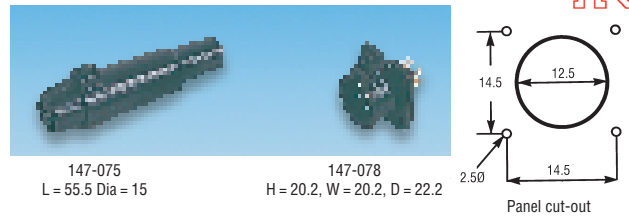




## 6 Pole Locking 5A



Low cost locking 6 pole inlet connectors. The female plug has fully shrouded sockets, a polarising/locking mechanism, solder termination and a cable clamp.

Contact rating 5A @ 150V ac    Housing Contacts Black polyacetal  
Pin Sockets Brass, silver plated  
Phosphor bronze silver plated

Mftrs. List No. RPC1 12P 6S (03) = 147-075, RPC1 12RB 6P (BLK) = 147-078

CM85

	Order Code	1+	50+	150+	250+
Free socket	147-075				
Panel plug	147-078				

## 7 Pole Latching 5Ax



The female plug has fully shrouded sockets, solder terminations and cable clamping. The chassis plug has shrouded pins to avoid accidental damage.

Contact rating 5A @ 150V ac    Housing Blue polyamide  
Contacts Pin Brass, silver plated  
Socket Phosphor bronze, silver plated

Mftrs. List No. RPC2 12P 7S = 147-076, RPC2 12RB 7P (01) = 147-079

CM86

	Order Code	1+	50+	150+	250+
Free socket	147-076				
Panel plug	147-079				

## Push-pull bearing latched



- Unique push-pull latching mechanism
- Vibration and Impact proof connection
- Lightweight



Current rating 2A    Body Nickel plated  
Voltage rating 300V rms 3,12 way    Contacts Gold plated turned brass  
200V rms 8 way    Acceptable wire size 24AWG  
150V rms 5 way

Contact resistance 8mΩ max  
Operating temperature -25°C to 85°C

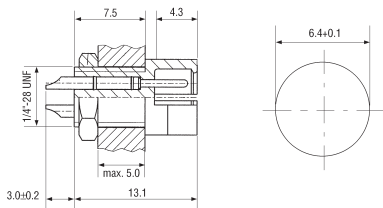
CM474

No. of Ways	Mftrs. List No.	Order Code	1+	10+	25+	50+	100+	250+
<b>Free Plug</b>								
3	PRC05P3M	358-423						
5	PRC05P5M	358-435						
8	PRC05P8M	358-472						
12	PRC05P12M	358-484						
<b>Free Socket</b>								
3	PRC05P3F	358-514						
5	PRC05P5F	358-540						
8	PRC05P8F	358-587						
12	PRC05P12F	358-630						
<b>Panel Plug</b>								
3	PRC05R3M	358-691						
5	PRC05R5M	358-708						
8	PRC05R8M	358-769						
12	PRC05R12M	358-850						
<b>Panel Socket</b>								
3	PRC05R3F	358-861						
5	PRC05R5F	358-903						
8	PRC05R8F	358-915						
12	PRC05R12F	358-939						

continued

No. of Ways	Mftrs. List No.	Order Code	Price Each		
			1+	10+	50+
<b>Free Plug</b>					
2	99-0071-100-01	330-1874			
3	99-0075-100-03	330-1886			
4	99-0079-100-04	330-1898			
5	99-0095-100-05	330-1904			
7	99-0475-100-07	330-1916			
8	99-0479-100-08	330-1928			
<b>Free Socket</b>					
2	99-0072-100-02	330-1930			
3	99-0076-100-03	330-1941			
4	99-0080-100-04	330-1953			
5	99-0096-100-05	330-1965			
7	99-0476-100-07	330-1977			
8	99-0480-100-08	330-1989			
<b>Panel Plug</b>					
2	09-0073-00-02	330-1990			
3	09-0077-00-03	330-2003			
4	09-0081-00-04	330-2015			
5	09-0097-00-05	330-2027			
7	09-0477-00-07	330-2039			
8	09-0481-00-08	330-2040			
<b>Panel Socket</b>					
2	09-0074-00-02	330-2052			
3	09-0078-00-03	330-2064			
4	09-0082-00-04	330-2076			
5	09-0098-00-05	330-2088			
7	09-0478-00-07	330-2090			
8	09-0482-00-08	330-2106			

## 3A, Subminiature Connector – 'Series 719'



- 3, 4 & 5 pole mating pairs of panel inlet subminiature connectors
- Single keyway polarisation
- Positive snap-in device
- Internal pinch ring cable clamp
- Very small size

Contact rating 3A @ 125V ac  
Temperature range -40°C to +85°C  
Housing Polyamide  
Contacts Copper alloy, nickel/gold plating  
Termination Solder bucket  
Wire conductor size 0.25mm<sup>2</sup>

CM160

No. of Ways	Mftrs. List No.	Order Code	1+	20+	50+	100+	500+
<b>Free Plug</b>							
3	09-9747-70-03	.150-496					
4	09-9767-70-04	.658-443					
5	09-9789-71-05	.150-502					
<b>Free Socket</b>							
3	09-9748-70-03	.150-540					
4	09-9764-70-04	.658-455					
5	09-9790-71-05	.150-575					
<b>Panel Plug</b>							
3	09-9749-30-03	.150-587					
4	09-9765-30-04	.658-467					
5	09-9791-30-05	.150-599					
<b>Panel Socket</b>							
3	09-9750-30-03	.150-605					
4	09-9766-30-04	.658-479					
5	09-9792-30-05	.150-617					