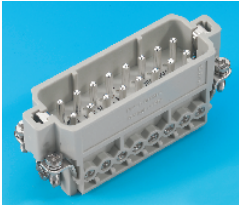


Mfrs. List No.	Cable Entry	Thread	Material	Type	Order Code
Housing Bulk Mounting					
0920 010 0301			Metal	1 lever	462-597
0920 010 0321	with plastic cover		Metal	1 lever	345-4216
Housing Surface, 1 Cable Entry					
0920 010 0252		PG21	Metal	1 lever	345-4228
Housing Surface, 2 Cable Entries					
0920 010 0291		PG16	Metal	1 lever	345-4241
0920 010 0296	with plastic cover	PG16			345-4230

STEP1824

Mfrs. List No.	Order Code	Price Each		
		1+	5+	10+
Hood				
0920 010 1541	462-573			
0920 010 1440	462-585			
0920 010 0440	NEW 341-4760			
0920 010 0540	NEW 341-4759			
Housing Bulk Mounting				
0920 010 0301	462-597			
0920 010 0321	NEW 345-4216			
Housing Surface, 1 Cable Entry				
0920 010 0252	NEW 345-4228			
Housing Surface, 2 Cable Entries				
0920 010 0291	NEW 345-4241			
0920 010 0296	NEW 345-4230			

Inserts HAN 16A, HAN 32A



Standards
Approvals
Current rating
No. of ways

Nominal voltage
Environmental protection
Insulation resistance
Material insulator
Mating cycles
Flammability
Temperature range

HARTING

**DIN VDE 0627, DIN VDE 0110
UL, CSA, SEV**
HAN 16A 10A HAN 32A 10A
HAN 16A 16 + earth (1-16)
HAN 32A 16 + earth (17-32)
HAN 3A 230V, HAN 4A 230V
3(C)
>10¹⁰ Ω
Polycarbonate
≥500
UL94V-0
-40°C to +125°C

STEP1825

Mfrs. List No.	Type	Order Code	Price Each		
			1+	5+	10+
Male Insert					
0920 016 2612	HAN 16A (1-16)	659-496			
0920 016 2613	HAN 16A (17-32)	NEW 346-3916			
Female Insert					
0920 016 2812	HAN 16A (1-16)	659-502			
0920 016 2813	HAN 16A (17-32)	NEW 346-3928			

Housings for HAN 16A, HAN 32A, HAN 25D Sizes 16A and 32A



HARTING



Mfrs. List No.	Cable Entry	Thread	Material	Type	Order Code
HAN 16A and HAN 25D					
Hood					
0920 016 1541	side	PG16	Metal	2 pegs	847-240
0920 016 1441	straight, high constr.	PG16	Metal	2 pegs	847-252
Housing Bulk Mount					
0920 016 0301			Metal	1 lever	151-863
0920 016 0321	with plastic cover		Metal	1 lever	345-4289
Housing Surface Mount, 1 Cable Entry					
0920 016 0251		PG16	Metal	1 lever	345-4253
0920 016 0252		PG21	Metal	1 lever	345-4265
Housing Surface Mount, 2 Cable Entries					
0920 016 0291		PG16	Metal	1 lever	345-4277
Cover					
0920 016 5425					345-4290

Mfrs. List No.	Cable Entry	Thread	Material	Type	Order Code
HAN 16A and HAN 25D					
Hood					
0920 032 1520	side	PG16	Metal	4 pegs	345-4393
0920 032 0520	side, high constr.	PG16	Metal	4 pegs	345-4370
0920 032 0521	side, high constr.	PG29	Metal	4 pegs	345-4381
0920 032 0420	straight	PG21	Metal	4 pegs	345-4356
0920 032 0421	straight	PG29	Metal	4 pegs	345-4368
Housing Bulk Mount					
0920 032 0301			Metal	2 levers	345-4344
Housing Surface Mount, 1 Cable Entry					
0920 032 0230		PG21	Metal	2 levers	345-4307
0920 032 0231		PG29	Metal	2 levers	345-4319
Housing Surface Mount, 2 Cable Entries					
0920 032 0270		PG21	Metal	2 levers	345-4320
0920 032 0271		PG29	Metal	2 levers	345-4332

STEP1826

Mfrs. List No.	Order Code	Price Each		
		1+	5+	10+
Hood				
0920 016 1541	847-240			
0920 016 1441	847-252			
Housing Bulk Mounting				
0920 016 0301	151-863			
0920 016 0321	345-4289			
Housing Surface Mount, 1 Cable Entry				
0920 016 0251	345-4253			
0920 016 0252	345-4265			
Housing Surface Mount, 2 Cable Entries				
0920 016 0291	345-4277			
Cover				
0920 016 5425	345-4290			
Hood				
0920 032 1520	345-4393			
0920 032 0520	345-4370			
0920 032 0521	345-4381			
0920 032 0420	345-4356			
0920 032 0421	345-4368			
Housing Bulk Mounting				
0920 032 0301	345-4344			
Housing Surface Mount, 1 Cable Entry				
0920 032 0230	345-4307			
0920 032 0231	345-4319			
Housing Surface Mount, 2 Cable Entries				
0920 032 0270	345-4320			
0920 032 0271	345-4332			

Inserts HAN D



Standards
Approvals
Current rating
No. of ways
Nominal voltage
Proof voltage
Environmental protection
Insulation resistance
Material insulator
Mating cycles
Flammability
Temperature range

HARTING

**DIN VDE 0627, DIN VDE 0110
UL, CSA, SEV**
10A
7, 15, 25, 40 and 64 + earth
250V
2kV
3(C)
>10¹⁰ Ω
Polyamide
≥500
UL94HB
-40°C to +125°C

To obtain a 80 way version of HAN80D two inserts HAN40D have to be used. HAN 7D will only fit into plastic housings of the size 3A.

STEP1827

Mfrs. List No.	Type	Order Code	Price Each		
			1+	5+	10+
Male Insert					
0921 007 0301	HAN 7D	151-845			
0936 008 3001	HAN 8D	NEW 345-5129			
0921 015 3001	HAN 15D	462-550			
0921 025 3001	HAN 25D	151-847			
0921 040 3001	HAN 40D	151-849			
0921 064 3001	HAN 64D	151-851			
Female Insert					
0921 007 3131	HAN 7D	151-846			
0936 008 3131	HAN 8D	NEW 345-5117			
0921 015 3101	HAN 15D	462-561			
0921 025 3101	HAN 25D	151-848			
0921 040 3101	HAN 40D	151-850			
0921 064 3101	HAN 64D	151-852			

continued