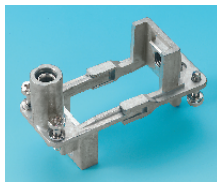


Rectangular Multipole — Continued

Frame 1 Module



- Grounding system according to **DIN-VDE**
- Rigid Zamac-diecast
- Both male and female modules may be mounted in the same frame
- Frame suitable for hood and housing

HARTING

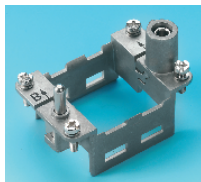
New

Standards **DIN VDE 0627, DIN VDE 0110**
 Approvals **UL, CSA**
 Material Zamac
 Temperature range -40°C to +125°C

STEP1838

Mftrs. List No.	No. of Modules	Order Code	Price Each		
			1+	5+	10+
0914 000 0304	1	345-5257			

Hinged Frame



- Grounding according to **DIN-VDE**
- Rigid Zamac-diecast
- Both male and female modules can be combined in one frame
- Hinged frames are suitable for standard housings
- Modules removable without extraction tool
- Vibration proof improved mechanical lock of modules

HARTING

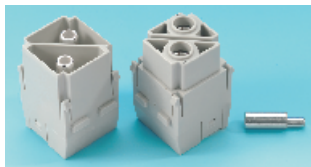
New

Standards **DIN VDE 0627, DIN VDE 0110** Material Zamac
 Approvals **UL, CSA** Temperature range -40°C to +125°C
 Number of modules 2, 3, 4, 6

STEP1839

Mftrs. List No.	No. of Modules	Order Code	Price Each		
			1+	5+	10+
Frame for Hood					
0914 006 0303	2	332-9768			
0914 010 0303	3	332-9781			
0914 016 0303	4	332-9800			
0914 024 0303	6	332-9823			
Frame for Housing					
0914 006 0313	2	332-9770			
0914 010 0313	3	332-9793			
0914 016 0313	4	332-9811			
0914 024 0313	6	332-9835			

HAN Axial Screw Module 100A



- 2 contacts 100A for power circuits
- Male insert with additional protective collar
- Axial screw termination for wire sizes of 16 to 35mm² can be combined with all HAN modules
- Polarisation

HARTING

New

- Connect PE-Kontakt only with special cable shoe

Standards **DIN VDE 0627, DIN VDE 0110**

Inserts
 Number of ways 2
 Current rating 100A
 Nominal voltage 1000V
 Proof voltage 4kV
 Environmental category 3(C)
 Insulation resistance $\geq 10^{10} \Omega$
 Material Polycarbonate

Mating cycles ≥ 500
 Temperature range -40°C to +125°C

Contacts
 Material Copper Alloy
 Contact plating Silver 30µm Ag
 Contact resistance $\leq 0.3m\Omega$
 Termination 16-35mm² (5-2 AWG)

STEP1840

	Mftrs. List No.	Order Code	Price Each		
			1+	5+	10+
Male Insert	0914 002 2651	345-3870			
Female Insert	0914 002 2751	345-3881			
Cable Shoe	0914 000 9912	345-4010			

HAN Axial Screw Module 40A



- 2 contacts 40A for power circuit
- Insert with additional protective shroud
- Polarisation
- Axial screw termination
- Only for use with hinged frame
- Max. wire size 10.5mm

HARTING

New

Standards **DIN VDE 0627, DIN VDE 0110**

Insert
 Number of ways 2
 Current rating 40A
 Nominal voltage 1000V
 Proof voltage 4kV
 Environmental protection 3(C)
 Insulation resistance $\geq 10^{10} \Omega$
 Material Polycarbonate

Flammability **UL94V-0**
 Mating cycles ≥ 500
 Temperature range -40°C to +125°C

Contact
 Material Copper Alloy
 Plating Silver 30µm Ag
 Contact resistance $\leq 0.5m\Omega$
 Termination 2.5-10mm² (14-8 AWG)

STEP1841

	Mftrs. List No.	Order Code	Price Each		
			1+	5+	10+
Male Insert	09 14 002 2601	345-4022			
Female Insert	09 14 002 2701	345-4034			

HAN C Module



- 3 contacts 40A for power circuits
- Male insert with additional protective shroud
- Polarisation
- Crimp-termination
- Male and Female inserts can be combined in one frame

HARTING

New

Standards **DIN VDE 0627, DIN VDE 0110**
 Approvals **UL, CSA**

Insert
 No. of ways 3
 Current rating 40A
 Nominal voltage 500V
 Cable \varnothing max. 5mm 400/690V
 Cable \varnothing max. 7.5mm 500V
 Proof voltage 3kV
 Environmental protection 3(C)
 Insulation resistance $\geq 10^{10} \Omega$

Material Polycarbonate
 Flammability **UL94V-0**
 Mating cycles ≥ 500
 Temperature range -40°C to +125°C

Contact
 Material Copper alloy
 Plating Silver 30µm Ag
 Contact resistance $\leq 0.3m\Omega$
 Termination 1.5-16mm² (16-10 AWG)

STEP1842

Mftrs. List No.	Cable \varnothing	Order Code	Price Each			
			1+	5+	10+	
Male Insert						
09 14 003 3001	5mm	728-093				
09 14 003 3002	7.5mm	345-5269				
Female Insert						
09 14 003 3101	5mm	728-100				
09 14 003 3102	7.5mm	345-5270				
	Wire Size (mm ²)		Price Per Pack (10 Pieces)			
			1+	25+	50+ 100+	
Crimp Contacts Pin						
09 32 000 6104	1.5	335-4350				
09 32 000 6105	2.5	335-4362				
09 32 000 6107	4.0	728-160				
09 32 000 6108	6.0	728-172				
Crimp Contacts Socket						
09 32 000 6204	1.5	335-4374				
09 32 000 6205	2.5	335-4386				
09 32 000 6207	4.0	728-184				
09 32 000 6208	6.0	728-196				
Crimp Tool						
0999 000 0303		728-354				
Positioner						
0999 000 0304		728-391				
Extraction Tool						
0999 000 0305		728-378				

HAN E Module



- 6 contacts 16A for power circuits
- Male insert with additional protective shroud
- Polarisation
- Crimp termination
- Male and female inserts can be combined in one frame

HARTING

New

Standards **DIN VDE 0627, DIN VDE 0110**
 Approvals **UL, CSA**

Inserts
 No. of ways 6
 Current rating 16A
 Nominal voltage 500V
 Proof voltage 3kV
 Environmental protection 3(C)
 Insulation resistance $\geq 10^{10} \Omega$
 Material Polycarbonate
 Flammability **UL94V-0**

Mating cycles ≥ 500
 Temperature range -40°C to +125°C

Contacts
 Material Copper alloy
 Plating Silver 3µm Ag
 Contact resistance $\leq 0.3m\Omega$
 Termination 0.5-4.0mm² (20-12AWG)

STEP1843