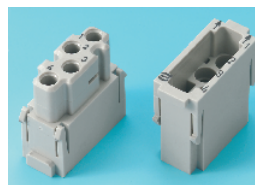


HARTING

HAN Multicontact Module



- 4 contact silos for population with coaxial and high voltage contacts
- Male insert with additional protective shroud
- Polarisation
- Male and female inserts can be combined in one frame

Possible contact arrangements

	Male Insert	Female Insert
Contacts	09 14 004 4501	09 14 004 4512
Coaxial	Socket Contacts	Pin Contacts
High voltage	Socket Contacts	Pin Contacts
Coaxial cable		
Cable type	Insulation ∅ mm	Center Conductor ∅ mm
50 Ω		
RG 174 /U	2.5	0.48
RG 188 A/U	2.5	0.54
RG 316 /U	2.5	0.54
75 Ω		
RG 179 B/U	2.55	0.3
RG 187 A/U	2.7	0.3

 Standards Approvals **DIN VDE 0627, DIN VDE 0110
UL, CSA**

Male Inserts

No. of ways	4
Environmental protection	3(C)
Insulation resistance	≥10 ¹⁰ Ω
Material	Polycarbonate
Flammability	UL94V-0
Mating cycles	≥ 500
Temperature range	-40°C to +125°C

Contact resistance

Centre	≤ 10mΩ
Outside	≤ 3mΩ
Current rating	max. 1.5A
Nominal voltage	50V

High Voltage Contacts

Material	Copper alloy
Plating	Gold 1.3µm over 4µm Ni
Contact resistance	≤ 3mΩ
Current rating	max. 1.5A
Nominal voltage	1000V if populated with high voltage contacts only

Coaxial Contacts

Material	Copper alloy
Plating	Gold 2.5µm/0.8µm over 4µm Ni
Impedance	50Ω / 75Ω

STEP1847

Mftrs. List No.	Order Code	Price Each
		1+ 5+ 10+
Male Insert		
09 14 006 3001	728-111	
Female Insert		
09 14 006 3101	728-123	
Wire Size (mm ²)		Price Per Pack (10 Pieces)
		1+ 25+ 50+ 100+
Crimp Contacts Pin		
09 33 000 6121	0.5	847-513
09 33 000 6114	0.75	345-5890
09 33 000 6105	1.0	847-525
09 33 000 6104	1.5	847-537
09 33 000 6102	2.5	847-549
09 33 000 6107	4.0	847-550
Crimp Contacts Socket		
09 33 000 6220	0.5	847-562
09 33 000 6115	0.75	345-5907
09 33 000 6205	1.0	847-574
09 33 000 6204	1.5	847-586
09 33 000 6202	2.5	847-598
09 33 000 6207	4.0	847-604
		Price Each
		1+
Crimp Tool		
0999 000 0110	151-855	
Positioner		
0999 000 0112	847-616	
Extraction Tool		
0999 000 0319	728-408	

HAN DD Module



- 12 contact silos for population with signal contacts 10A
- Male insert with additional protective shroud
- Polarisation
- Crimp-termination
- Male and female inserts can be combined in one frame

HARTING

 Standards Approvals **DIN VDE 0627, DIN VDE 0110
UL, CSA**

Inserts

No. of ways	12	Mating cycles	≥500
Current rating	10A	Temperature range	-40°C to +125°C
Nominal voltage	250V	Contacts	
Proof voltage	2kV	Material	Copper alloy
Environmental protection	3(C)	Plating	Silver 3µm Ag
Insulation resistance	≥10 ¹⁰ Ω	Contact resistance	≤ 3 mΩ
Material	Polycarbonate	Termination	0.14-2.5mm ² (26-14 AWG)
Flammability	UL94V-0		

STEP1846

Mftrs. List No.	Order Code	Price Each
		1+ 5+ 10+
Male Insert		
09 14 012 3001	728-135	
Female Insert		
09 14 012 3101	728-147	
Wire Size (mm ²)		Price Per Pack (10 Pieces)
		1+ 25+ 50+ 100+
Crimp Contacts Pin		
09 15 000 6104	0.14-0.37	847-495
09 15 000 6103	0.5	658-480
09 15 000 6105	0.75	345-5920
09 15 000 6102	1.0	151-853
09 15 000 6101	1.5	658-492
09 15 000 6106	2.5	658-509
Crimp Contacts Socket		
09 15 000 6204	0.14-0.37	847-501
09 15 000 6203	0.5	659-370
09 15 000 6205	0.75	345-5932
09 15 000 6202	1.0	151-854
09 15 000 6201	1.5	659-381
09 15 000 6206	2.5	659-393
		Price Each
		1+
Crimp Tool		
09 99 000 0110	151-855	
Positioner		
09 99 000 0111	151-856	
Extraction Tools		
09 99 000 0052 with Centerpin	151-858	
09 99 000 0012	336-0465	

Mftrs. List No.	Order Code	Price Each
		1+ 5+ 10+
Male Insert		
09 14 004 4501	854-451	
Female Insert		
09 14 004 4512	854-463	
Coaxial Contact Pin		1+ 25+ 50+ 100+
09 14 000 6111	50Ω	345-8337
09 14 000 6121	75Ω	345-8349
Coaxial Contact Socket		
09 14 000 6211	50Ω	345-8350
09 14 000 6221	70Ω	345-8362
High Voltage Contacts		
09 03 000 6140	Pin	812-985
09 03 000 6240	Socket	812-997

continued

Any Questions?

Our technical help desk will provide the answers, free of charge.
Please call (65) 788 1922
or e-mail singapore-technical@farnell.com