

Rectangular Multipole — continued

HAN Pneumatic Module

HARTING



- 2 or 3 contacts to transmit dry clean compressed air
- Termination of 1.6mm; 3mm; 4mm and 6mm inner diameter tubes
- Different tube dimensions can be combined in one module
- Socket contacts with/without shut-off valve
- Sturdy plastic contacts
- Extraction of pre-assembled pneumatic contacts possible
- Shut-off valve: when disconnected, a spring mechanism closes the pneumatic contact
- Male and female inserts are identical

New

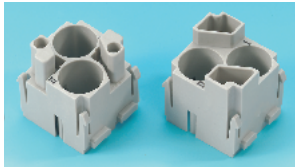
| Standards | DIN VDE 0627, DIN VDE 0110 | Approvals | UL, CSA |
|-------------------|----------------------------|-----------------------|--------------------------------|
| Inserts | | Tube termination | |
| No. of ways | 2/3 | Inner diameter ID | 1.6mm; 3.0 mm; 4.0mm and 6.0mm |
| Colour | Blue | | |
| Material | Polycarbonate | Pressure rating | Max. 8 bar |
| Flammability | UL94V-0 | Seal | |
| Mating cycles | ≥ 500 | Material | 'Buna-N' |
| Temperature range | -40°C to +80°C | Shut-off Valve | |
| Contacts | | Material | Polypropylene |
| Material | Delrin acetal | | |
| Colour | Black | | |

STEP1848

| Mfrs. List No. Insert | Mfrs. List No. Tube-ID | Order Code | Price Each | | |
|---|---------------------------|-----------------|------------|-----|----------|
| | | | 1+ | 5+ | 10+ |
| 09 14 003 4501 | for 1.6, 3.0, 4.0mm | 728-159 | | | |
| 09 14 002 4501 | for 6.0mm | 345-4046 | | | |
| Pin Contact | | | 1+ | 25+ | 50+ 100+ |
| 09 14 000 6151 | 1.6mm | 728-263 | | | |
| 09 14 000 6152 | 3.0mm | 728-275 | | | |
| 09 14 000 6153 | 4.0mm | 728-287 | | | |
| 09 14 000 6174 | 6.0mm | 345-4058 | | | |
| Socket Contact | | | | | |
| 09 14 000 6251 | 1.6mm | 728-299 | | | |
| 09 14 000 6252 | 3.0mm | 728-305 | | | |
| 09 14 000 6253 | 4.0mm | 728-317 | | | |
| 09 14 000 6274 | 6.0mm | 345-4060 | | | |
| Socket Contact with Shut-Off Valve | | | | | |
| 09 14 000 6256 | 1.6mm | 728-329 | | | |
| 09 14 000 6257 | 3.0mm | 728-330 | | | |
| 09 14 000 6258 | 4.0mm | 728-342 | | | |
| 09 14 000 6279 | 6.0mm | 345-4071 | | | |

HAN Coax Module

HARTING



- For Coax cable with an insulation diameter of 3-9.5mm
- EMC shielded sleeve
- Easy and fast termination
- With strain relief

New

| Standards | DIN VDE 0627, DIN VDE 0110 | Approvals | UL, CSA |
|--------------------------|----------------------------|----------------------------|---------------------|
| Male Inserts | | Nominal voltage | 42V |
| No. of ways | 2 | Environmental protection | 3(C) |
| Environmental protection | 3(C) | Material insulator | Polycarbonate |
| Material | Polycarbonate | Material outside conductor | Zamac |
| Insulation resistance | ≥10 ¹⁰ Ω | Insulation resistance | ≥10 ¹⁰ Ω |
| Flammability | UL94V-0 | Contact resistance | ≤4mΩ |
| Mating cycles | ≥ 500 | Flammability | UL94V-0 |
| Temperature range | -40°C to +125°C | Cable diameter | 3 - 9.5mm |
| Coax Contacts | | Temperature range | -40°C to +70°C |
| No. of ways | 1 + Shield | | |
| Current rating | 10A | | |

STEP1849

| | Mfrs. List No. | Order Code | Price Each | | |
|---------------------|----------------|-----------------|------------|----|-----|
| | | | 1+ | 5+ | 10+ |
| Male Insert | 0914 002 3001 | 345-3960 | | | |
| Female Insert | 0914 002 3101 | 345-3972 | | | |
| Coax-Contact Pin | 0915 001 3013 | 345-3984 | | | |
| Coax-Contact Socket | 0915 001 3113 | 345-3996 | | | |

Major International Brands

All the leading brand names from over 1,000 major international manufacturers.

HAN Quintax Module

HARTING

New



- 4 HAN D contacts for each HAN-QUINTAX contact
- 2 HAN QUINTAX-contacts for each HAN-QUINTAX module
- Modular system (double module)
- Terminates screened cables with an insulation diameter of 3-9.5mm
- Potential of screen is separated from potential of housing
- Several independent cables can be integrated in one housing without interruption of shielding
- Mating only possible when mounted in QUINTAX module
- Ideally suitable for the transmission of sensitive signals i.e. bus-signals

| Standards | DIN VDE 0627, DIN VDE 0110 | Approvals | UL, CSA |
|--------------------------|----------------------------|----------------------------|---------------------|
| QUINTAX-module | | Nominal voltage | 42V |
| No. of ways | 2 | Environmental protection | 3(C) |
| Environmental protection | 3(C) | Material insulator | Polycarbonate |
| Material | Polycarbonate | Material outside conductor | Copper alloy |
| Insulation resistance | ≥10 ¹⁰ Ω | Insulation resistance | ≥10 ¹⁰ Ω |
| Flammability | UL94V-0 | Contact resistance | ≤ 4mΩ |
| Mating cycles | ≥ 500 | Flammability | UL94V-0 |
| Temperature range | -40°C to +125°C | Insulation diameter | 3-9.5mm |
| QUINTAX-contacts | | Temperature range | -40°C to +70°C |
| No. of ways | 4 + screen | | |
| Current rating | 10A | | |

STEP1850

| Mfrs. List No. | Order Code | Price Each | | |
|-------------------------------|-----------------|------------|----|-----|
| | | 1+ | 5+ | 10+ |
| Male Insert | | | | |
| 09 14 002 3001 | 335-4465 | | | |
| Female Insert | | | | |
| 09 14 002 3101 | 335-4477 | | | |
| QUINTAX-Contact Pin | | | | |
| 09 15 004 3013 | 335-4489 | | | |
| QUINTAX-Contact Socket | | | | |
| 09 15 004 3113 | 335-4490 | | | |
| Extraction Tool | | | | |
| 09 99 000 0323 | 335-4507 | | | |

RJ45-Adaptor

HARTING



- The RJ45 adaptor connects two oncoming RJ45 connectors in a HAN housing
- It uses the space of two HAN modules

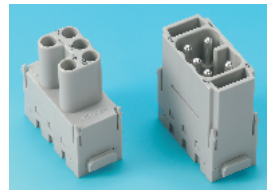
New

| Mfrs. List No. | Order Code | Price Each | | |
|----------------|-----------------|------------|----|-----|
| | | 1+ | 5+ | 10+ |
| 09 14 001 2791 | 345-3935 | | | |

STEP1853

HAN ES Module

HARTING



- 5 contacts 16A for power transmission
- Male insert with additional protective shroud
- Polarisation
- Cage-clamp
- Combination of male and female inserts in one frame
- HAN ES module only suitable for hinged frame

New

| Standards | DIN VDE 0627, DIN VDE 0110 | Approvals | UL, CSA |
|-----------|----------------------------|-----------|---------|
|-----------|----------------------------|-----------|---------|