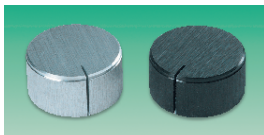


Knobs (Spindle Fitting) — continued

1/4" Solid Aluminium Brushed Finish (Grub Screw)



- Solid aluminium control knobs
- Natural or matt black anodised brushed finish
- Indented line indicator
- Grub screw fixing

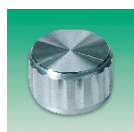
H = 14

MC16H2DA = 662-320, MC22H2DA = 662-331, MC28H2DA = 662-343, MC16H2DB = 662-355, MC22H2DB = 662-367, MC28H2DB = 662-379

H153

Knob Dia.	Order Code	1+	Price Each		
			50+	100+	250+
Natural					
16	.662-320				
22	.662-331				
28	.662-343				
Black					
16	.662-355				
22	.662-367				
28	.662-379				

1/4" Fluted Solid Aluminium (Grub Screw)



- Fluted solid aluminium control knob
- Indented line indicator
- Grub screw fixing

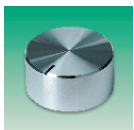
H = 154

MC15T2D = 662-380, MC20T2D = 662-392, MC25T2D = 662-409, MC30T2D = 662-410

H154

Knob Dia.	Order Code	1+	Price Each		
			50+	100+	250+
15	.662-380				
20	.662-392				
25	.662-409				
30	.662-410				

Aluminium Clad Finish



- Spin finish
- 4mm or 1/4" spindle diameters
- Black line indicator
- Grub screw fixing

MC18S4D = 662-422, MC22S4D = 662-434, MC14S2D = 662-446, MC18S2D = 662-458, MC22S2D = 662-460, MC29S2D = 662-471, MC32S2D = 662-483, MC38S2D = 662-495

H155

Knob Dia.	Spindle Dia.	Height	Order Code	1+	Price Each		
					50+	100+	250+
18	4mm	12	.662-422				
22	4mm	13	.662-434				
14	1/4"	16	.662-446				
18	1/4"	12	.662-458				
22	1/4"	13	.662-460				
29	1/4"	14	.662-471				
32	1/4"	14	.662-483				
38	1/4"	16	.662-495				

1/4" Fine Fluted Solid Aluminium (Grub Screw)



- Solid aluminium control knobs
- Available in natural or matt black anodised finish
- Top view indented live indicator
- Fine fluted sides
- Fitted with grub screws

H = 15.5

H93

Knob Dia.	Order Code	1+	Price Each		
			5+	10+	50+
Natural					
19.0	890-923				
23.8	890-935				
31.8	890-947				
Black					
19.0	890-959				
23.8	890-960				
31.8	890-972				

Collet Knobs

Matt Finish, 1/4"



Knob Plain cap Lined cap Knob fitted with cap

- Matt black nylon control knobs
- Brass collet is simply tightened using a screwdriver
- Coloured caps available plain or with line

Operating temperature -20°C to +70°C

15mm Diameter	Colour	Height	Mfrs. List No.	Order Code
Knob	Black	16.3	KX-26-15-61-3	151-046
Plain cap	Black	1.2	KX-30-15-10-3	151-047
	Red	1.2	KX-30-15-10-4	151-048
Lined Cap	Black	1.2	KX-30-15-11-3	151-051
	Red	1.2	KX-30-15-11-4	151-052

Knob	Order Code	1+	Price Each		
			50+	100+	250+
Knob	151-046				
Order Multiple=10					
Plain Cap		10+	50+	100+	250+
Black	151-047				
Red	151-048				
Lined Cap					
Black	151-051				
Red	151-052				

21mm Diameter	Colour	Height	Mfrs. List No.	Order Code
Knob	Black	17.5	KX-26-21-61-3	151-055
Plain cap	Black	1.5	KX-30-21-10-3	151-056
	Red	1.5	KX-30-21-10-4	151-057
Line Cap	Black	1.5	KX-30-21-11-3	151-060
	Red	1.5	KX-30-21-11-4	151-061

Knob	Order Code	1+	Price Each		
			50+	100+	250+
Knob	151-055				
Order Multiple=10					
Plain Cap		10+	50+	100+	250+
Black	151-056				
Red	151-057				
Lined Cap					
Black	151-060				
Red	151-061				

28mm Diameter	Colour	Height	Mfrs. List No.	Order Code
Knob	Black	18.3	KX-26-28-61-3	151-064
Plain cap	Black	1.5	KX-30-28-10-3	151-065
Lined cap	Black	1.5	KX-30-28-11-3	151-069
	Red	1.5	KX-30-28-11-4	151-070

H81

Knob	Order Code	1+	Price Each		
			50+	100+	250+
Knob	151-064				
Order Multiple=10					
Plain Cap		10+	50+	100+	250+
Black	151-065				
Lined Cap					
Black	151-069				
Red	151-070				

Plain Circular – 70 Series

- Gloss finish



Knob Dia.	Spindle Dia.	Colour	Mfrs. List No.	Type	Order Code
9mm	1/8"	Black	020-1220	70-9-1/8-Black	320-298
	3mm	Black	020-1120	70-9-3-Black	320-304
10mm	1/8"	Black	020-2220	70-10-1/8-Black	320-316
	3mm	Black	020-2120	70-10-3-Black	320-330
	4mm	Black	020-2320	70-10-4-Black	320-341