

## Latest Products from...

### Toggle Latch



See page 1160

### Padlocks



See page 1162

### Digital Door Lock



See page 1162

### Combination Lock



See page 1164

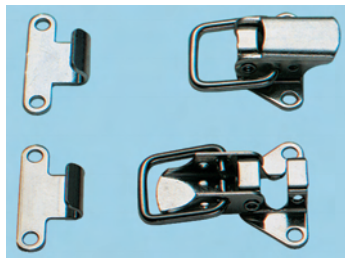
## Contents

Page

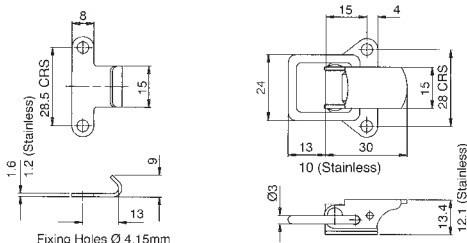
Door Locks	1161
Padlocks	1162
Pawl Latches	1161
Toggle Latches	1160

## Toggle Latches

### Compact, Rigid Link, Strong



- Neat, compact appearance
- With 3mm  $\varnothing$  straight link
- Bright zinc steel or stainless steel (Grade 316) versions
- 5mm pull up
- Locking hole feature
- Rivet base



211771

Order Multiple=2		Price Each				
	Order Code	2+	6+	10+	20+	50+
Bright Zinc Steel	716-6643	0.86	0.84	0.82	0.80	0.78
Stainless Steel	716-6655	1.58	1.48	1.40	1.35	1.18

### FOR MORE INFORMATION & CHOICE

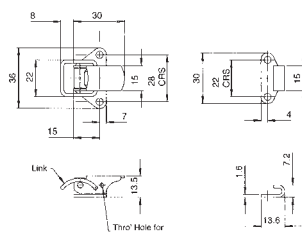
#### Product Search

Dzus



RoHS Compliant Items Only | [Advanced Search](#)

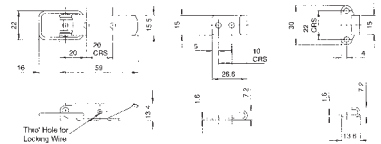
### Compact, Curved Link



211772

Order Multiple=2		Price Each				
	Order Code	2+	6+	10+	20+	50+
Chrome-plated	716-7064	1.35	1.27	1.20	1.08	1.01
Stainless Steel	716-7076	1.89	1.76	1.70	1.54	1.43
Zinc-plated	717-1468	2.04	1.74	1.48	1.30	1.15

### Slim-Line Rigid Link



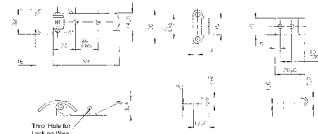
211778

- Neat appearance-base contained within lever envelope
- With straight link
- Locking hole feature
- Rivet base
- 15mm pull up
- Versions available in zinc-plated steel and stainless steel (Grade 304)
- Each kit is supplied with two designs of strike

211774

Order Multiple=2		Price Each			
	Order Code	2+	6+	10+	20+
Zinc-plated	716-7805	0.93	0.87	0.83	0.77
Stainless steel	716-7829	1.79	1.65	1.56	1.44

### Slim-Line Curved Link

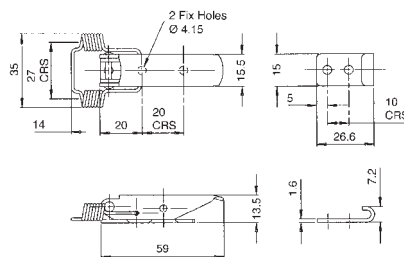


- Neat appearance - base contained within lever envelope
- Locking hole feature
- Rivet base
- 15mm pull up
- Versions available in zinc-plated steel, chrome-plated steel and stainless steel (Grade 304)

211775

Order Multiple=2		Price Each				
	Order Code	2+	6+	10+	20+	50+
Zinc-plated	716-8147	1.59	1.51	1.37	1.23	1.09
Chrome-plated	716-8159	1.49	1.40	1.33	1.24	1.16
Stainless steel	716-8160	2.21	2.03	1.95	1.77	1.64

### Coil Spring Link, Slim-Line



- Neat appearance - base contained within lever envelope
- With coiled link for extra adjustment
- Locking hole feature
- Rivet base
- 12.7mm Max. deflection without distortion
- Bright zinc-plated steel
- Complete with standard strike

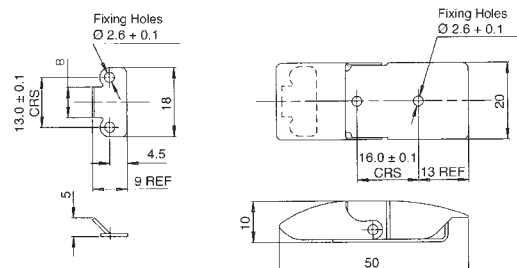
211776

Order Multiple=2		Price Each				
	Order Code	2+	6+	10+	20+	50+
	716-8380	1.46	1.38	1.29	1.19	1.12

### Fully-Enclosed, Smooth, Compact



- Neat, compact appearance
- Low profile - 10mm height
- Steel with chromium plate finish
- Rivet base
- 8mm pull up



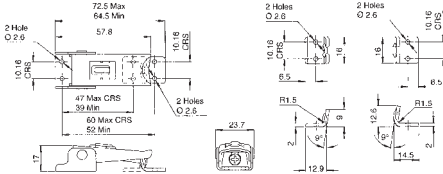
211778

Order Multiple=2	Order Code	2+	6+	10+	20+	50+
716-8925		1.22	1.14	1.09	1.01	0.93

**Adjustable, High Strength, Compact, Secondary Lock**



- Compact with high strength
- Fully adjustable to 8mm
- Vibration-proof
- Secondary lock safety feature
- With 8mm pull up
- Supplied with one strike with each latch
- Versions available in zinc-plated steel or stainless steel (Grade 304)



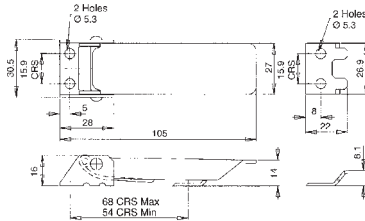
211779

Order Multiple=2	Order Code	2+	6+	10+	20+	50+
Zinc-plated	716-9036	3.25	3.01	2.90	2.66	2.47
Stainless steel	716-9048	4.29	3.97	3.79	3.50	3.25

**Adjustable, High Strength, Low Profile**



- High strength
- Fully adjustable to 14mm
- Vibration-proof
- Zinc-plated steel
- With 5mm pull up



211780

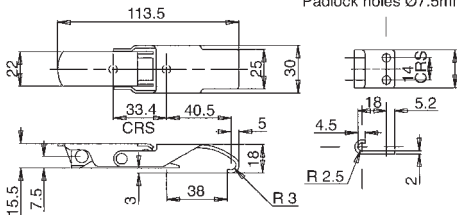
Order Multiple=2	Order Code	2+	6+	10+	20+	50+
716-9322		3.48	3.23	3.05	2.84	2.65

**Solid, Claw Link, with Padlock Facility**



- With solid claw link
- Locking hole feature
- Rivet base
- 15mm pull up
- Versions available in zinc-plated steel and stainless steel (Grade 304)

Fixing holes Ø5.2mm  
Padlock holes Ø7.5mm



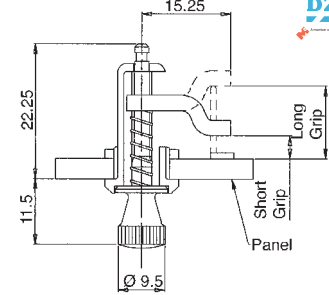
211781

Order Multiple=2	Order Code	2+	6+	10+	20+	50+
Stainless steel	716-9565	2.74	2.56	2.45	2.25	2.09

**Pawl Latches**



**Miniature Pawl Latches**

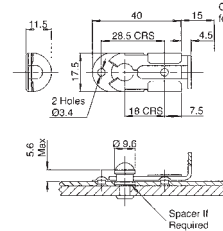
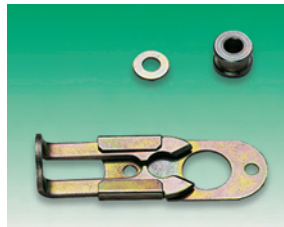


- Hand operated quarter turn
- Chrome finish
- 10mm Ø hole

211790

Order Multiple=5	Order Code	5+	10+	25+	50+	100+
Short	717-2503	1.86	1.72	1.65	1.52	1.40

**Slide Latch**

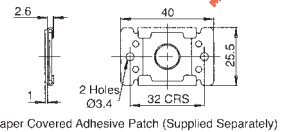
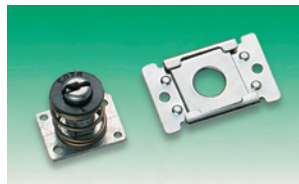


- Low cost securing latch
- Spring action resists vibration and shock loads

211791

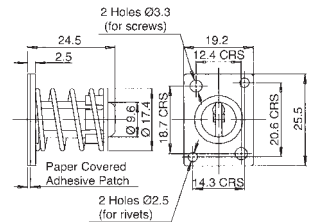
Order Multiple=10	Order Code	10+	30+	60+	90+	120+
717-2643		1.15	1.04	0.97	0.88	0.82

**Pin Latch with Receptacle**



Paper Covered Adhesive Patch (Supplied Separately)

- Totally concealed latch
- Offers 'Push to Lock - Push to Unlock'
- Quick one hole preparation
- Fixed by self adhesive pads
- Floating receptacle to overcome mis-alignment



211792

Order Multiple=5	Order Code	5+	25+	50+	100+	250+
717-2874		12.77	12.42	12.08	11.76	11.46

**Door Locks**

**100 Series Digital Code Locks**



- Digital code door lock with oval handle and soft rounded lock case
- Ideal for restricting access for low usage doors i.e. stock cupboards, warehouses, garages or sheds
- Fully mechanical
- Easy to fit, with all parts and fixings included
- Suitable for internal and external use
- Code can be changed quickly, as required
- Over 8,000 codes to choose from
- Available in a silver grey or polished brass finish
- Holdback option, to keep door unlocked when required

380795.276274.386133

Description	Order Code	1+	5+
Silver grey	842-2303	47.26	42.94
Polished brass	842-2311	37.24	33.85
Silver grey + holdback	842-2320	47.26	42.94
Polished brass + holdback	842-2338	47.26	42.94

Over 480,000 products online



Door Locks - continued

FOR MORE INFORMATION & CHOICE

Product Search

Codelocks



RoHS Compliant Items Only | Advanced Search

200 Series Digital Codelocks



- Totally durable PVD (Physical Vapour Deposition) finish, to improve hardness, wear resistance and oxidation resistance
- Digital code door lock with hexagonal, bevelled handle and lock case
- Ideal for marine and coastal environments or anywhere that metal corrosion is prone
- Fully mechanical
- Easy to fit, with all parts and fixings included
- Suitable for internal and external use
- Code can be changed quickly, as required
- Over 8,000 codes to choose from
- Available in a stainless steel or polished brass finish
- Holdback option, to keep door unlocked when required



380796.276315.386134

Description	Order Code	1+	5+	Price Each
Stainless steel	842-2346	65.51	59.54	
Polished brass	843-0993	65.51	59.54	
Stainless steel+holdback	842-2362	65.51	59.54	
Polished brass+holdback	842-2370	65.51	59.54	

Door Lock with Mechanical Key Override



- Premium door lock suitable for a wide range of light-duty entry control applications in offices, warehouses, laboratories and around the home.
- Digital code door lock with hexagonal bevelled handle
  - Fully mechanical
  - Over 8,000 codes to choose from
  - Key override allows the code to be bypassed and the lock opened with a key
  - PVD weather-resistant
  - Stainless Steel finish
  - Easy to fit with all parts and fixings included



412405.410086

Order Code	1+	5+	Price Each
973-5542	76.33	70.75	

500 Series Digital Codelocks



This push button lock is a heavy duty mechanically coded lock with full size lever handles for use in high traffic situations. The lever handles allow it to be used as the primary lock on most doors, whilst the functions provide for control of the door in various ways.

- Full size lever handles
- Deadbolt to lock out code users
- Code free entry in latching mode
- Panic/Safety function - inside lever handle overrides deadbolt and latch
- 2047 codes to choose from
- Available in stainless steel finish

Two models are available:

Push Button System

This model is intended to replace the conventional door furniture fitted to an existing mortice latch, or an existing mortice lock which has both a spring latch and a deadbolt. The square follower should be 8mm square. Any lock and key mechanism is retained to operate the deadbolt. The latchbolt will only operate by code, and NOT by key.

Push Button & Latch Kit

This model has a tubular, deadlocking, mortice latch and may be used as a new installation on a door, or where an existing latch is to be replaced.

380796.276353.386129

Description	Order Code	1+	5+	Price Each
Push Button System	842-2397	95.27	85.73	
Push Button and Latch Kit	842-2400	111.74	100.57	

Electronic Door Locks



Stand alone electronic locks with full size lever handles, particularly suitable for medium-duty use in health, educational, commercial and residential environments.

- Low power consumption through new piezo technology
- Over 500,000 operations from 4 x AA cell batteries
- Allows up to 90 user codes 4, 5 or 6 digits long
- Connections for remote release by reception desk button
- Connection for release by alarm system
- Code free entry by key or electronically from keypad

- Tamper alarm and low battery warning
- Supplied with deadlocking tubular mortice latch
- PVD weather-resistant

412407.410164

Description	Order Code	1+	5+	Price Each
Stainless Steel	973-5607	128.81	122.45	

Mechanical Lever Locks



Medium-duty locks with full size lever handles, allowing use as the primary lock on doors where a knob operated lock would be unsuitable.

- Panic/safety function inside lever, always overrides deadbolt and latch
- Outside lever has a slipping clutch to avoid damage to the mechanism if forced
- Over 5,000 codes to choose from
- Complete with a tubular, deadlocking mortice latch
- PVD weather-resistant
- Available in stainless steel or polished brass finish

Additional features 420 Series

- Comes complete with mortice lock that can lock out users where appropriate
- Safety feature ensures that the inside lever handle will retract the latch and deadbolt so always providing a means of escape in an emergency
- Key can be used to retract the latchbolt and so may be issued for cleaning and security staff use

412406.410088

Description	Order Code	1+	5+	Price Each
410 Stainless Steel	973-5569	79.37	73.59	
420 Stainless Steel	973-5585	76.55	72.96	

Padlocks

FOR MORE INFORMATION & CHOICE

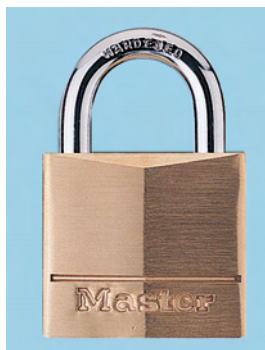
Product Search

Padlock



RoHS Compliant Items Only | Advanced Search

Brass Padlocks



- Stylish and strong solid brass lock body
- Weather-resistant and durable
- Standard steel shackles on the 20mm versions and hardened steel shackles on the 30mm and above versions
- Also available keyed alike
- Supplied with 2 keys (20mm 4 pack comes with 4 keys)

Size (mm)	Shackle	Vertical Clearance	Horizontal Clearance	Cylinder Type
20	4	11	6	3 Pin
30	5	16	14	4 Pin
40	6	22	21	4 Pin
50	7	25	25	5 Pin
60	9	32	32	5 Pin
70	11	39	46	6 Pin

418264.425779



Size (mm)	Order Code	Price Each			
		1+	10+	25+	50+
<b>Standard Padlocks</b>					
20	105-7963	2.63	2.47	2.31	2.13
30	105-7970	3.07	2.87	2.69	2.49
40	105-7971	4.39	4.11	3.84	3.55
50	105-7973	6.15	5.74	5.38	4.97
60	105-7974	8.80	8.21	7.69	7.09
70	105-7975	13.18	12.29	11.54	10.65
<b>Keyed Alike Padlocks</b>					
20 (Pk 4)	105-7969	8.80	8.21	7.69	7.09
30	105-7979	3.07	2.87	2.69	2.49
40	105-7980	4.39	4.11	3.84	3.55
50	105-7981	6.15	5.74	5.38	4.97

**Long Shackle Brass Padlocks**



- Stylish and strong solid brass lock body
- Weather-resistant and durable
- Hardened steel shackles for greater cut resistance
- Also available keyed alike
- Supplied with 2 keys

Size (mm)	Shackle ∅	Vertical Clearance	Horizontal Clearance	Cylinder Type
40	6	51	21	4 Pin
50	7	64	25	5 Pin

418268.425780

Size (mm)	Order Code	Price Each			
		1+	10+	25+	50+
<b>Standard Padlocks</b>					
40	105-7977	6.59	6.15	5.76	5.32
50	105-7978	7.90	7.38	6.92	6.39
<b>Keyed Alike Padlocks</b>					
40	105-7982	6.59	6.15	5.76	5.32
50	105-7985	7.90	7.38	6.92	6.39

**Premium Brass Padlocks**



- Hardened Steel Shackle - extra protection against hacksaw & cropping attacks
- Double bolted locking mechanism (30 mm and above) - extra strength to resist torsion & pull attacks
- Solid Brass Body - added resistance against corrosion
- Anti-pick mushroom pins (30 mm and above) - extra protection against picking
- Paracentric keyway - extra protection against manipulation

Size	Clearance	Shackle	Order
20	9	11	132-2711
40	22	22	132-2714
50	27	29	132-2715
60	33	35	132-2716
40	22	63	132-2718
50	28	80	132-2719
25	13	13	132-2720

460768.456604

Size	Order Code	Price Each	
		1+	5+
<b>Standard</b>			
20mm	132-2711	2.90	2.80
40mm	132-2714	5.00	4.85
50mm	132-2715	7.95	7.70
60mm	132-2716	10.05	9.75
<b>Long Shackle</b>			
40mm	132-2718	5.85	5.65
50mm	132-2719	9.85	9.55
<b>Standard Two Pack</b>			
25mm	132-2720	6.25	6.05

**Premium Brass Padlocks (Keyed Alike)**



- Hardened Steel Shackle - extra protection against hacksaw & cropping attacks
- Double bolted locking mechanism (30 mm and above) - extra strength to resist torsion & pull attacks
- Solid Brass Body - added resistance against corrosion
- Anti-pick mushroom pins (30 mm and above) - extra protection against picking
- Paracentric keyway - extra protection against manipulation
- Individual sizes are keyed alike

Size	Shackle ∅	Clearance	Shackle
40mm	22mm	22mm	6.4mm
50mm	27mm	29mm	8.0mm
60mm	33mm	35mm	9.5mm
40mm	22mm	63mm	6.4mm

460769.456618

Size	Order Code	Price Each	
		1+	5+
<b>Standard</b>			
40mm	132-2724	5.45	5.30
50mm	132-2725	9.05	8.80
60mm	132-2726	11.30	10.95
<b>Long Shackle</b>			
40mm	132-2727	7.10	6.90

**Adjustable Shackle Padlocks**



Laminated Steel



Brass

- Laminated steel or brass padlocks with adjustable/removable shackles
- Hardened steel shackles for cut resistance
- Brass version with double locking for pry resistance

Type	Size (mm)	Shackle ∅	Max. Vertical Clearance	Horizontal Clearance	Cylinder Type
Laminated Steel	44	7	136	21	Warded
Brass	50	11	155	45	5 Pin

418523.425787

Type	Order Code	Price Each			
		1+	10+	25+	50+
Laminated Steel	105-7999	6.15	5.74	5.38	4.97
Brass	105-8000	12.84	11.98	11.23	10.37

**Brass Combination Locks**



- Resettable combination for added convenience & security
- Solid brass body for added resistance against corrosion

Over 480,000 products online



**Padlocks - continued**

**Brass Combination Locks - continued**

	Digits	Clearance	Shackle	Order
20	3	8	20	132-2748
30	4	14	24	132-2749
40	4	20	26	132-2750

460776.456734

Size	Order Code	1+	Price Each	5+
20mm	132-2748	4.60		4.45
40mm	132-2750	10.05		9.75

**Round Fixed Combination Padlock**



- Zinc die cast padlock with dial style combination lock
- 3 digit fixed combination
- 1500 possible combinations
- Hardened steel shackle for cut resistance
- Colours may vary

Size (mm)	Shackle	Vertical Clearance	Horizontal Clearance	Cylinder Type
48	7	19	21	-

418513.425785

Size (mm)	Order Code	1+	Price Each	10+	25+	50+
48	105-7995	6.44		6.01	5.63	5.21

**Brass Resettable Combination Padlocks**



- 3 or 4 digit resettable combination padlocks
- Solid brass bodies with brass dials for outdoor use
- 3 digit version with brass shackle, ideal for bags and tool boxes
- 4 digit version with hardened steel shackle for higher cut resistance

Type	Size (mm)	Shackle	Vertical Clearance	Horizontal Clearance
3 Digit	30	4	25	14
4 Digit	40	6	23	21

418515.425786

Type	Order Code	1+	Price Each	10+	25+	50+
3 Digit	105-7997	6.92		6.47	6.06	5.59
4 Digit	105-7998	8.90		8.29	7.78	7.19

**High Security Industrial Combination Padlock**



- Solid brass padlock for weather resistance and durability
- 4 digit combination lock can be reset with a key for added security
- 10,000 possible combinations
- Hardened steel, shrouded shackle for maximum cut resistance
- Double-locking shackle for extra prying resistance
- Supplied with 1 reset combination key

Size (mm)	Shackle	Vertical Clearance	Horizontal Clearance	Cylinder Type
51	8	25	25	-

418509.425784

Size (mm)	Order Code	1+	Price Each	10+	25+	50+
51	105-7994	22.75		21.23	19.90	18.37

**Colour Coded Padlocks**



Health and Safety regulations regarding the isolation of industrial power supplies demand colour coded padlocks be used in conjunction with a lock-off hasp. Kasp padlocks, available in 6 colours, enable different departments or maintenance teams to operate autonomously, fulfilling Health & Safety obligations.

- Plastic coated body - maximum resistance against corrosion
- Brass shackle - anti-spark & added resistance against corrosion
- Available with different keys or keys alike (same colour only)

Size	Clearance	Shackle
40mm	20mm	20mm
		6.4mm

460772.456698

Different Keys	Order Code	Price Each			
		1+	5+	10+	25+
Black	132-2732	5.45	5.30	5.10	4.90
Blue	132-2733	5.45	5.30	5.10	4.90
Green	132-2735	5.45	5.30	5.10	4.90
Orange	132-2736	5.45	5.30	5.10	4.90
Red	132-2737	5.45	5.30	5.10	4.90
Yellow	132-2738	5.45	5.30	5.10	4.90
<b>Keys Alike (For same colour)</b>					
Black	145-3533	5.98	5.32	5.09	4.92
Blue	145-3534	5.98	5.32	5.09	4.92
Green	145-3535	5.98	5.32	5.09	4.92
Orange	145-3536	5.98	5.32	5.09	4.92
Red	145-3537	5.69	5.07	4.85	4.68
Yellow	145-3538	5.98	5.32	5.09	4.92

**Lock Off Hasps**



- All steel lock off hasps
- Allow up to 6 workers to lock off an individual power source
- Available in two sizes with 25mm or 38mm jaws
- Red plastic coated for high visibility

460773.456715

Size	Order Code	1+	Price Each	5+
25mm	132-2739	6.40		6.20

**Disk Padlocks**



- Hardened Steel Shackle - extra protection against hacksaw & cropping attacks
- Double Bolted Locking mechanism - extra strength to resist torsion & pull attacks
- Stainless Steel Body - maximum resistance against corrosion
- 5 pin cylinder with anti-pick mushroom pins (4 pins in 60 mm) extra protection against picking
- Paracentric keyway for extra protection against manipulation
- Drill resistant keyway (70 mm only) - protects the cylinder against drill attack

Size	Clearance	Shackle
60mm	15mm	13mm
70mm	19mm	16mm
70mm	19mm	16mm

460779.456884

Size	Order Code	1+	Price Each	5+
<b>Standard</b>				
60mm	132-2761	9.20		8.90
70mm	132-2762	10.90		10.55
<b>Keyed Alike</b>				
70mm	132-2763	13.80		13.40

**All Weather Padlocks**



- Zinc-plated steel body for strength and durability
- Solid steel shackle
- Front access keyway for ease of use
- Available individually or as a pack of 3
- Pack of 3 are keyed alike
- Supplied with 2 keys (3 pack comes with 6 keys)

Size (mm)	Shackle Ø	Vertical Clearance	Horizontal Clearance	Cylinder Type
51	6	20	20	4 Pin

418271.425781

Description	Order Code	Price Each		
		1+	25+	50+
Singles	105-7986	7.90	7.38	6.92
Pack of 3	105-7987	14.83	13.85	12.99

**Padlock Solid Stainless Steel**



**SQUIRE Arctic**

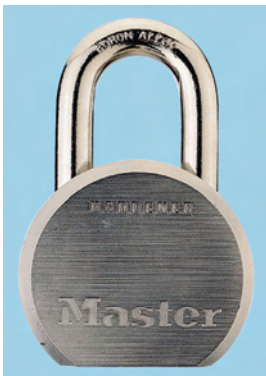
A range of superb quality rust-free padlocks designed to meet the harshest of conditions. With a stainless steel lock body and stainless steel shackle this range of padlocks offer long term value for money with a higher level of security than standard padlocks. Suitable for high humidity areas like coastal and dock land areas.

Order Code	433-8236	433-8248
Body width	40mm	50mm
Body thickness	14.5mm	23mm
Shackle dia.	6.9mm	9.4mm
Shackle clearance (ver.)	19mm	22.3mm
Shackle clearance (hor.)	14mm	18.8mm

249348

Order Code	Price Each	
	1+	5+
433-8236	12.38	12.01
433-8248	22.74	22.08

**High Security Industrial Padlock Solid Steel**



- High security padlocks, resistant to tough abuse
- Hardened solid steel body
- Hardened boron alloy shackle for superior cut resistance
- More than 9000 key changes for maximum pick resistance
- Removable cylinder can be replaced or repinned
- Dual ball bearing deadbolt locking for extra pry resistance
- Supplied with 2 keys

Size (mm)	Shackle Ø	Vertical Clearance	Horizontal Clearance	Cylinder Type
64	11	29	22	5 Pin

418273.425782

Size (mm)	Order Code	Price Each		
		1+	10+	25+
64	105-7988	32.64	30.46	28.55

**High Security Industrial Padlocks Xenoy Covered Laminated Steel**



- High security laminated steel for superior strength
- Xenoy thermoplastic cover withstands attacks and extreme temperatures
- Hardened boron alloy shackle for superior cut resistance
- High security 6 spool pin cylinder for maximum pick resistance
- Double ball bearing locking protects against prying and hammering
- Estane shackle seal keeps water out (open shackle versions)
- Removable cylinder can be replaced or repinned
- Supplied with 2 keys

Shackle Type	Size (mm)	Shackle Ø	Vertical Clearance	Horizontal Clearance
Open	54	8	29	22
Open	67	11	35	22
Long	54	8	63	22
Closed	54	8	20	23
Closed	67	11	20	23

418278.425783

Size (mm)	Order Code	Price Each		
		1+	10+	25+
<b>Open Shackle Padlocks</b>				
54	105-7989	14.48	13.51	12.66
67	105-7990	23.88	22.29	20.89
<b>Long Shackle Padlocks</b>				
54	105-7991	29.69	27.71	25.98
<b>Closed Shackle Padlocks</b>				
54	105-7992	30.69	28.65	26.87
67	105-7993	39.47	36.85	34.54

**High Security Padlock**



- 14mm boron alloy steel shackle - extra protection against hacksaw and cropping attacks
- Double ball bearing locking mechanism for maximum strength against torsion and pull attacks
- Pearl nickel plated hardened steel body - extra corrosion resistance
- 6 pin cylinder with anti pick mushroom pins
- Paracentric keyway - extra manipulation protection
- Drill resistant keyway
- Closed shackle

Size	70mm	29mm	Clearance	22mm	Shackle	14mm

460785

Size	Order Code	Price Each	
		1+	+
70mm	132-2700	41.92	--

**Hasps & Staples**



- Hardened staple - extra protection against attack
- Chrome plated finish - extra resistance against corrosion
- Concealed fixings - added security

**Padlocks - continued**

**Hasps & Staples - continued**

	Shackle
75	9.0
95	13.4
115	13.4

460774.456717

Size	Order Code	Price Each		
		1+	5+	5+
75mm	132-2741	2.10	2.05	
95mm	132-2742	2.90	2.80	
115mm	132-2743	4.60	4.45	

**Solid Steel Hasps & Staples**



- Hasps and staples made from hardened steel for extra strength and cut resistance
- Tamper-proof hinges help resist prying

418534.425788

Length (mm)	Max. Shackle ∅ (mm)	Order Code	Price Each			
			1+	10+	25+	50+
64	7	105-8001	3.47	3.24	3.02	2.81
89	9	105-8002	3.96	3.69	3.47	3.19
115	13	105-8003	4.44	4.15	3.89	3.59
153	14	105-8004	7.85	7.34	6.87	6.36

**Solid Steel Hinged Hasps & Staples**

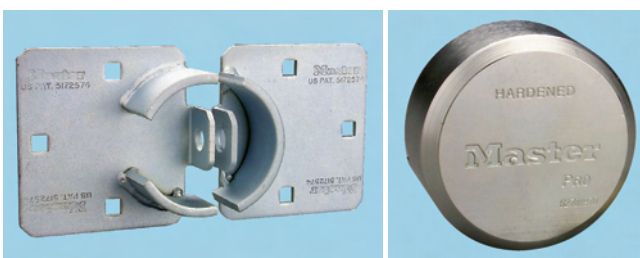


- Single or double hinged hasps and staples
- Ideal for reaching around corners and angles
- Hardened steel body for added strength
- Hardened boron alloy staples resist cutting and sawing

418536.425789

Length (mm)	Max. Shackle ∅ (mm)	Order Code	Price Each			
			1+	10+	25+	50+
<b>Single Hinged</b>						
160	11	105-8006	9.09	8.49	7.95	7.35
200	13	105-8011	12.17	11.36	10.65	9.83
<b>Double Hinged</b>						
200	11	105-8012	12.97	12.12	11.35	10.47

**Solid Steel Hasp & Hidden Shackle Padlock**



- Heavy-duty, ideal for securing van doors, sheds, tool chests etc.
- Protected shackle design prevents prying, cutting and sawing
- Hardened steel padlock body is strong, durable and resists corrosion
- Removable cylinder can be replaced or repinned
- Padlock supplied with 2 keys
- Dimensions: Hasp (LxW) - 230 x 110mm, Padlock (Dia.) - 73mm

418538.425790

Description	Order Code	Price Each			
		1+	10+	25+	50+
Hasp	105-8007	29.02	27.09	25.40	23.44
Padlock	105-8008	32.67	30.48	28.57	26.38

**Braided Steel Looped Security Cable**



- Braided steel wires for strength and flexibility
- Convenient loops with rust-resistant sleeves and scratch guards
- Galvanised steel cables also resist rusting
- Smoke vinyl coating helps prevent scratching

418542.425791

Diameter	Length	Order Code	Price Each			
			1+	10+	25+	50+
10mm	1.8m	105-8015	12.84	11.98	11.23	10.37
10mm	4.5m	105-8013	19.80	18.48	17.32	15.98
15mm	1.8m	105-8014	22.69	21.18	19.85	18.31

**High Security U-Bar Padlock**

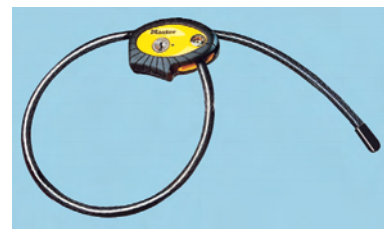


- Mini U-Bar, ideal for use with looped cables and chains
- Wide steel lock body for extra strength
- Double locking, hardened steel shackle resists prying, cutting and sawing
- Vinyl covered body and shackle prevents scratching
- 7 pin tumbler for extreme pick resistance
- Supplied with 4 keys

418545.425792

Size (mm)	Order Code	Price Each			
		1+	10+	25+	50+
93	105-8016	22.75	21.23	19.90	18.37

**Fully Adjustable Locking Cable**



- Patented locking mechanism holds the cable tight at any position from 30cm to 1.8m
- Convenient re-keyable cylinder
- 100% braided steel cable
- Weather-tough and rust-resistant
- Vinyl sleeve prevents scratching
- Compact storage with velcro strap to hold excess cable
- Supplied with 2 keys

Body Width	Cable ∅	Cable Length	Cylinder Type
90mm	10mm	1.8m	Waffer

418547.425793

Order Code	Price Each			
	1+	10+	25+	50+
105-8017	21.99	20.53	19.25	17.76

**Troubleshooting tips**



Chat live online to one of our technical engineers at [www.farnell.co.uk](http://www.farnell.co.uk)