

Latest Products from...

Day & Night Bullet Camera



See page 1143

Pressure Mats



See page 1141

Portable Key Storage Box



See page 1134

Telephone Autodiallers



See page 1139

Contents

Page

Access Control	1132
Alarm Kits - Wired	1138
Alarm Kits - Wireless	1137
Autodiallers & Digital Communicators	1139
Bell Boxes	1140
Camera Housings & Brackets	1148
CCTV - Wireless	1142
CCTV Accessories	1146
CCTV Cameras - Colour	1144
CCTV Cameras - Monochrome	1142
CCTV Lenses	1148
CCTV Observation Systems	1141
Control Panels & Remote Keypads	1139
Dummy Cameras	1147
Electric Locking	1140
Intruder Alarm Accessories	1140
Key Security & Accessories	1134
Mirrors	1136
Monitors	1148
Passive Infrared Detectors (PIR's)	1139
Video Recorders	1149

Keypad Door Entry

100 Series Digital Codelocks



- Digital code door lock with oval handle and soft rounded lock case
- Ideal for restricting access for low usage doors i.e. stock cupboards, warehouses, garages or sheds
- Fully mechanical
- Easy to fit, with all parts and fixings included
- Suitable for internal and external use
- Code can be changed quickly, as required
- Over 8,000 codes to choose from
- Available in a silver grey or polished brass finish
- Holdback option, to keep door unlocked when required



380795.276274.386133

Description	Order Code	Price Each	
		1+	5+
Silver grey	842-2303	47.26	42.94
Polished brass	842-2311	37.24	33.85
Silver grey + holdback	842-2320	47.26	42.94
Polished brass + holdback	842-2338	47.26	42.94

200 Series Digital Codelocks



- Totally durable PVD (Physical Vapour Deposition) finish, to improve hardness, wear resistance and oxidation resistance
- Digital code door lock with hexagonal, bevelled handle and lock case
- Ideal for marine and coastal environments or anywhere that metal corrosion is prone
- Fully mechanical
- Easy to fit, with all parts and fixings included
- Suitable for internal and external use
- Code can be changed quickly, as required
- Over 8,000 codes to choose from
- Available in a stainless steel or polished brass finish
- Holdback option, to keep door unlocked when required



380796.276315.386134

Description	Order Code	Price Each	
		1+	5+
Stainless steel	842-2346	65.51	59.54
Polished brass	843-0993	65.51	59.54
Stainless steel+holdback	842-2362	65.51	59.54
Polished brass+holdback	842-2370	65.51	59.54

Door Lock with Mechanical Key Override



- Premium door lock suitable for a wide range of light-duty entry control applications in offices, warehouses, laboratories and around the home.
- Digital code door lock with hexagonal bevelled handle
 - Fully mechanical
 - Over 8,000 codes to choose from
 - Key override allows the code to be bypassed and the lock opened with a key
 - PVD weather-resistant
 - Stainless Steel finish
 - Easy to fit with all parts and fixings included



412405.410086

Order Code	Price Each	
	1+	5+
973-5542	76.33	70.75

500 Series Digital Codelocks



This push button lock is a heavy duty mechanically coded lock with full size lever handles for use in high traffic situations. The lever handles allow it to be used as the primary lock on most doors, whilst the functions provide for control of the door in various ways.

- Full size lever handles
- Deadbolt to lock out code users
- Code free entry in latching mode
- Panic/Safety function - inside lever handle overrides deadbolt and latch
- 2047 codes to choose from
- Available in stainless steel finish

Two models are available:

Push Button System

This model is intended to replace the conventional door furniture fitted to an existing mortice latch, or an existing mortice lock which has both a spring latch and a deadbolt. The square follower should be 8mm square. Any lock and key mechanism is retained to operate the deadbolt. The latchbolt will only operate by code, and NOT by key.

Push Button & Latch Kit

This model has a tubular, deadlocking, mortice latch and may be used as a new installation on a door, or where an existing latch is to be replaced.

380798.276353.386129

Description	Order Code	Price Each	
		1+	5+
Push Button System	842-2397	95.27	85.73
Push Button and Latch Kit	842-2400	111.74	100.57

Mechanical Lever Locks



Medium-duty locks with full size lever handles, allowing use as the primary lock on doors where a knob operated lock would be unsuitable.

- Panic/safety function inside lever, always overrides deadbolt and latch
- Outside lever has a slipping clutch to avoid damage to the mechanism if forced
- Over 5,000 codes to choose from
- Complete with a tubular, deadlocking mortice latch
- PVD weather-resistant
- Available in stainless steel or polished brass finish

Additional features 420 Series

- Comes complete with mortice lock that can lock out users where appropriate
- Safety feature ensures that the inside lever handle will retract the latch and deadbolt so always providing a means of escape in an emergency
- Key can be used to retract the latchbolt and so may be issued for cleaning and security staff use

412406.410088

Description	Order Code	Price Each	
		1+	5+
410 Stainless Steel	973-5569	79.37	73.59
420 Stainless Steel	973-5585	76.55	72.96

Electronic Door Locks



Stand alone electronic locks with full size lever handles, particularly suitable for medium-duty use in health, educational, commercial and residential environments.

- Low power consumption through new piezo technology
- Over 500,000 operations from 4 x AA cell batteries
- Allows up to 90 user codes 4, 5 or 6 digits long
- Connections for remote release by reception desk button
- Connection for release by alarm system
- Code free entry by key or electronically from keypad

- Tamper alarm and low battery warning
- Supplied with deadlocking tubular mortice latch
- PVD weather-resistant

412407.410164

Description	Order Code	Price Each	
		1+	5+
Stainless Steel	973-5607	128.81	122.45

Over 480,000 products online



K42 Single Door Codelock

The K42 is the best selling codelock in the world. It is simple to install and comes with 2 codes, enabling one to be issued to caretakers and tradesmen, whilst the other code is reserved for tenants or employees.

- One door
- Two four-digit code combinations
- Internal or external use
- Backlit keypad
- One voltage-free contact
- 1-30 sec. lock relay opening time

Max relay loading at 30V dc
Supply voltage 12-24V dc or 18-24V ac
Power consumption normal, 35 mA with back lighting
Dimensions (H x W x D) 140 x 80 x 40

227684

	Order Code	1+	Price Each	3+
K42 Keypad	354-0340	102.55		101.81

Storm Keypads for Access Control**StrikeMaster/CodeMaster**

Anti-vandal Vandal resistant General service
H=118, W=99.5, D=15
Fixing centres 74 x 93
Power supply
H=50, W=95, D=63

3 finishes are available to suit all keypad applications:-

Anti-Vandal - All metal construction**Vandal Resistant** - Super impact black polymer with metal keytops (keypad matches Door Entry Intercom, Order Codes 724-6869 and 724-6870)**General Service** - Super impact polymer case and buttons in grey**StrikeMaster Access Control Keypads**

- 50 codes of 4, 5 or 6 digits
- Tamper, duress and forced door alarm
- LED and audible tone user feedback
- Timed door release or latched open function
- One or two door control
- Lock out on invalid code attempts
- Hidden code feature
- All weather resistant
- Comprehensive fitting kit provided

CodeMaster Wiegand Keypads

- Compatible with Access Control equipment requiring 26 or 32 Bit Wiegand data
- Use with or as replacement for card readers
- 5-12V dc
- LED and audible tone user feedback
- All weather resistant
- Comprehensive fitting kit provided

An electric door strike is required for use with the Strikemaster keypads - for suitable door strikes please see the Electric Locking section within Security Access Control.

Keypads

Operational life ≥4 cycles per key
Weather sealing IP65
Resistance to static discharge ≥12.5kV
Service temperature -20°C (dry) to +85°C

CE compliant

StrikeMaster 11V to 28V dc or 9V to 20V ac supply
CodeMaster 5V to 12V dc supply

DC Power Supply

Input 210V dc to 240V ac
Output 12V dc @ 650mA

212959

	Order Code	1+	2+	5+	10+
Keypad for local door control - Strikemaster					
Anti-vandal (metal)	773-920	162.86	141.42	138.60	131.25
General service	773-931	122.17	107.50	99.67	92.49
Wiegand Data Keypad - Codemaster					
Anti-vandal	773-967	111.23	97.88	90.77	84.21

Card Door Entry**Single Door Card Reader**

The BC-615 card reader combines the controller and reader head in the same unit, making for easy installation. All electrical functions and programming are carried out via the keypad. With compact card readers, five security levels can be set; door unlocked, common code, card only, card combined with PIN code, and door locked.

- Backlit keypad
- Printer output
- Door monitoring
- Fully upwards compatible
- Can be networked to a central PC to give a maximum capacity of 8 readers

- 1000 card capacity
- 15 time zones
- Tamper output
- Duress output
- User selectable PIN
- Cards sold individually

Max relay loading at 30V dc
Supply voltage 12-24V dc or 18-24V ac
Power consumption 100mA quiescent
Dimensions (H x W x D) 160 x 108 x 47

227674

	Order Code	1+	Price Each	3+
BC-615 Cardreader	874-5196	304.50		302.34
IB1 Mag Stripe Card	354-0005	1.22		1.21

Card Accessories**Open Fronted Plastic Card Holders**

This is a plastic, open fronted card holder where the card slides in/out from the side. They are available in a range of attractive colours and come in either landscape or portrait styles, and are fully compatible with the chains, lanyards and yo-yos which are also available.

227676

	Order Code	1+	Price Each	10+
Portrait Black	354-0108	0.62		0.51
Landscape Black	354-0145	0.62		0.51

Card Strap Clips

Two popular designs in card straps. These are designed to loop through either a card holder or slot in the actual access card itself. The straps come in two designs: one with a lever style clip and the other with a crocodile clip on the end of the strap; both have metal poppers.

227677

	Order Code	1+	Price Each	10+
Strap Clip Lever Style	354-0182	0.40		0.39

Neck Chains

Both these necklaces are suitable for use with RF/ID tags and both have a metal tub connector available in either nickel-plated or white plastic.

Nickel plated 710mm long

227678

	Order Code	1+	Price Each	10+
Nickel Plated	354-0200	0.67		0.65

Help us to help the environment

This catalogue has been printed on paper certified from a sustainable source.
Please recycle after use.

700 products added online every week

See our pick of the hottest products and latest technologies in 'What's New?' at www.farnell.co.uk



Card Accessories - continued

'Breakaway' Neck Lanyards



An attractive and comfortable-to-wear neck lanyard which will 'breakaway' when pulled. They are available in black, blue, green, red, yellow and white with a 'dog clip' for easy attachment to card holders etc.

Neck lanyard all colours 860mm long

227679

	Order Code	1+	Price Each	10+
Black	354-0224	1.64		1.61

Yo-Yo Retractable Card Reels



Retractable badge reels are attractive and convenient for displaying all types of ID and access control badges. They are popular for both work and recreational use, and are ideal where the card needs to be 'swiped' through a reader. They are available in different styles as follows; style 2 clip/loop, style 3 loop/loop clip.

227680

	Order Code	1+	Price Each	3+
Style 2	354-0297	3.83		3.81
Style 3	354-0303	3.73		3.71

Audio Entry System

Door Entry Kits
3K Series

- Audio door entry systems with varying numbers of channels
- Surface mount door panel with name plate/s and stainless steel finish
- Built-in lock relay to enable an electric lock
- Electronic call tone with 3 volume levels
- Door release facility on handset
- Compatible with most 12Vac lock releases
- Contents: Door panel, 12Vac 15VA DIN box transformer, handset (handset qty depends on kit)

436194.435981

	Order Code	1+	Price Each	5+
1 Way Kit	120-3622	66.60		65.01
2 Way Kit	120-3623	77.68		76.21
Additional Handset	120-3619	12.71		11.45

FOR MORE INFORMATION & CHOICE

Product Search

Door Entry


☐ RoHS Compliant Items Only | [Advanced Search](#)

Over 480,000 products online

Telephone Interface Door Entry Kit
EK380S

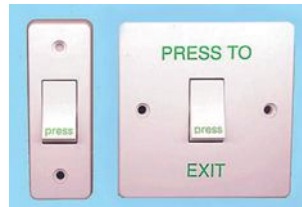
- Single button door entry kit which allows a conventional telephone to be used in place of a door entry handset
- Telephone can even be cordless or a special needs telephone with special features
- Door panel features a call button and name plate
- Separate tones determine door panel calls from external telephone calls
- Contents: Door panel, 12Vac/8Vdc 15VA DIN box power supply and telephone interface module

436193.435976

Order Code	1+	Price Each	5+
120-3621	186.72		184.41

Access Control Accessories

Exit Switches



- Single gang or slim-line single gang mount
- Momentary non-latching switch
- Tough plastic
- 427-4532 - single gang version suitable for flush or surface mounting (surface mount adaptor supplied)
- 878-8170 - narrow single gang version suitable for surface mounting (surface mount adaptor supplied)

A range of request to exit switches. Ideal for low traffic applications.

244955.264407

Description	Order Code	1+	Price Each	4+
Single Gang Exit Switch	427-4532	8.43		7.91
Narrow Single Gang Exit Switch	878-8170▲	6.47		6.04

Vandal Resistant Exit Switch



A vandal resistant exit button manufactured from stainless steel, providing a set of Normally Open or Normally Closed contacts. Comes with flush mount back box as standard and can be either flush or surface mount with the optional surface housing. Also available in narrow style for transom mounting.

227701

	Order Code	1+	Price Each	5+
Single Gang Exit Switch	354-0686	21.52		20.64
Narrow Style Exit Switch	354-0698	21.52		20.64
Surface Housing Single Gang	354-0704	7.56		7.36
Surface Housing Narrow style	354-0716	7.56		7.36

Keyswitch



A flush or surface mount stainless steel keyswitch, complete with flush mounting single gang back box. The keyswitch can be configured for either Normally Open or Normally Closed contacts, the legend on the faceplate reads On and Off as standard.

- Switch rating 4A at 250V ac or 2A at 12/24V dc
- Surface housing
- 2 keys supplied
- Narrow style available
- Maintained contact

227702

	Order Code	1+	Price Each	5+
Single Gang Exit Switch	354-0728	22.25		21.36
Surface Housing Single Gang	354-0704	7.56		7.36
Surface Housing Narrow style	354-0716	7.56		7.36

Break Glass Request To Exit Switch



- Unique Plug & Play installation concept
- Total flexibility in the choice of operating element
- Selectable Normally Open or Normally closed contacts
- Anti-tamper facility
- Enhanced aesthetics
- Backward compatibility
- Resettable unit or Break Glass unit available
- Available in a range of colours
- Weight: 0.16kg
- Dimensions (HxWxD): 93x89x59.5mm

447741.446747

Description	Order Code	1+	Price Each	5+
Break Glass Single Pole				
Green	127-2697	11.53		10.85
Yellow	127-2698	11.53		10.85
Break Glass Double Pole				
Green	127-2701	21.91		21.04
Re-Settable Single Pole				
Green	127-2702	11.81		11.12
Yellow	127-2703	11.81		11.12
White	127-2705	11.81		11.12
Re-Settable Double Pole				
Green	127-2707	21.91		21.04
Spares				
Spare Glass	890-1970	5.29		5.24

Door Loops



A range of door loops which include concealed fixing loops for standard and aluminium doors. Budget and armoured surface fixing loops for timber doors.

- 30cm flexible loop

227708

	Order Code	1+	Price Each	3+
Grip Range				
Armoured Surface Fixing	354-0947	10.86		10.77

Exit Stopper



Stops unauthorised exits and entries through emergency exit doors. This is a unique and highly effective way to alert you to any unauthorised exits or entries through any emergency exit door. It can also serve as an inexpensive security device and help prevent theft.

- Completely self-contained electronic door alarm
- Highly visible STOP SIGN discourages unauthorised use of emergency doors
- Fitted with 9V battery
- Key operated override facility

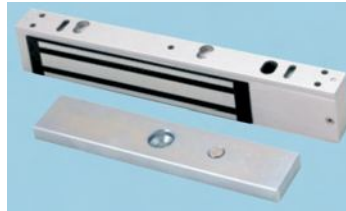
339310

Description	Order Code	1+	Price Each	4+
Red	506-1520	79.28		78.69

Electric Locking

Slimline Electromagnetic Locks

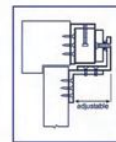
NEWMARK



- Slimline monitored and unmonitored magnetic locks
- Ideal for medium security applications for internal and external doors
- Surface mounted

Voltage 12/24V dc
Current:
Unmonitored 430mA@ 13.5V dc
Monitored 440mA@ 13.5V dc
Holding Force Up to 300kg
Finish Anodised Aluminium
Dimensions (WxHxD): 250 x 47 x 26mm

Installation Drawings

L Bracket Installation
Outswing door installationZ Bracket Installation
Inswing door installation

415057

	Order Code	1+	Price Each	3+
Slimline Magnet - Unmonitored	930-0457	28.39		26.61
Slimline Magnet - Monitored	930-0465	33.87		31.76
Z&L Bracket	930-0490	30.23		28.29
Glass Door Bracket	930-0503	23.04		21.60

Standard Electromagnetic Locks

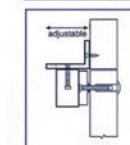
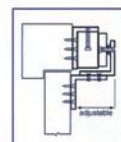
NEWMARK



- Standard monitored and unmonitored magnetic locks
- Ideal for high security applications for internal and external doors
- Surface mounted

Voltage 12/24V dc
Current:
Unmonitored 430mA@ 13.5V dc
Monitored 450mA@ 13.5V dc
Holding Force Up to 600kg
Finish Anodised Aluminium
Dimensions (WxHxD): 266 x 73 x 40mm

Installation Drawings

L Bracket Installation
Outswing door installationZ Bracket Installation
Inswing door installation

415062

	Order Code	1+	Price Each	3+
Standard Magnet - Unmonitored	930-0473	52.93		49.63
Standard Magnet - Monitored	930-0481	65.75		61.63
Z Bracket	930-0511	18.33		17.68
L Bracket	930-0520	13.85		12.98

Electromagnets

Energise to Hold



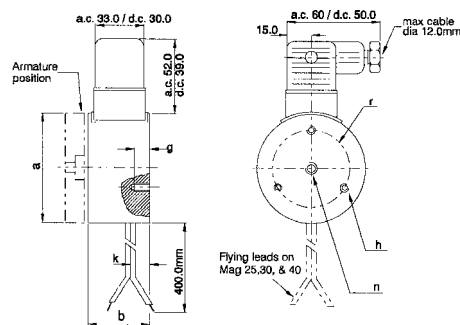
Over 480,000 products online



Electric Locking - continued

Electromagnets - continued

Energise to Hold - continued



- Powerful range of electromagnets with holding forces 140N to 1400N as standard
- Directly interchangeable with most European designs
- Ease of installation
- Optimum performance when used with Stephenson Gobin keeper plates
- Body: bright zinc-plated / clear passivated
- Applications include 'pick-and-place' processes, remote access systems & machine guards
- UK- manufactured

Ø	N	Power Cons	a	b	g	h	k	n	r	Weight
mm		W								g
25	140	4	25	20.5	4	M3	6.5	M5	15	70
30	230	4	30	24	5	M3	7.0	M5	18	200
40	500	5	40	27.5	5	M4	9.0	M6	26	220
50	750	6	50	30.5	5	M4	8.5	M6	34	380
65	1400	9	65	35.5	6	M5	8.5	M8	40	750

211887

	Order Code	1+	2+	Price Each	5+	10+	20+	50+
25mm								
12V dc	720-0821	32.94	31.68	30.51	29.41	28.06	27.12	
24V dc	720-0833	32.94	31.68	30.51	29.41	28.06	27.12	
30mm								
12V dc	720-0857	37.77	36.32	34.97	33.71	32.15	31.10	
24V dc	720-0869	37.77	36.32	34.97	33.71	32.15	31.10	
40mm								
12V dc	720-0882	40.66	39.10	37.67	36.31	34.62	33.48	
24V dc	720-0894	40.66	39.10	37.67	36.31	34.62	33.48	
50mm								
12V dc	720-0912	54.11	52.04	50.12	48.32	46.08	44.54	
24V dc	720-0924	54.11	52.04	50.12	48.32	46.08	44.54	
240V ac	720-0936	71.73	68.97	66.41	64.05	61.08	59.03	
65mm								
12V dc	720-0948	56.63	54.45	52.43	50.54	48.20	46.60	
24V dc	720-0950	56.63	54.45	52.43	50.54	48.20	46.60	

31

Keepers



- Range of keeper plates provides optimum holding force when used with StephensonGobin electromagnets
- Easily mounted by single fixing screw
- Bright zinc-plated / clear passivated

STEPHENSON
GOBIN

211888

Ø	Order Code	1+	2+	Price Each	5+	10+	20+	50+
25mm	720-0973	9.00	8.66	8.33	8.05	7.68	7.42	
30mm	720-0985	9.34	8.99	8.65	8.33	7.96	7.70	
40mm	720-0997	9.78	9.42	9.07	8.75	8.33	8.05	
50mm	720-1000	10.97	10.56	10.16	9.82	9.35	9.03	
65mm	720-1011	9.98	9.60	9.26	8.92	8.50	8.21	

Door Retainers



- Simple to install
- Designed to **BS5839 Part 3 1988**
- Available in 24V dc and 240V ac versions
- Supplied complete with keeper plate and mounting instructions
- Holds door in open position until fire-alarm is activated or power fails

STEPHENSON
GOBIN

211889

- Suitable for floor or wall mounting
- 112N rated holding force
- Zero residual magnetism
- Integral fuse as standard

- Attractive fire-retardant ABS casing
- 24V dc model incorporates 'spark-quenching' diode & protection against reverse polarity

Voltage	Order Code	1+	2+	5+	10+	20+	50+
24V dc	720-1035	27.64	27.19	26.76	26.33	25.61	25.21
240V ac	720-1047	30.34	29.83	29.35	28.90	28.09	27.67

Key Security & Accessories

Portable Key Storage Box



- Large key storage compartment, holds over 5 house, car or padlock keys
- 4 dial resettable combination lock
- Solid die cast body, reinforced to withstand hammering and sawing
- Zinc lock body and shutter door
- Wall mountable
- Weather-resistant
- Width: 85mm

Master
Lock

418553.425797

Order Code	1+	10+	Price Each	25+	50+
105-8027	30.38	28.35	26.58	24.53	

Economy Key Security Cabinets



A range of tough steel key cabinets, designed to provide a simple and effective control over the movements and whereabouts of keys.

- Strong cylinder lock with 2 keys
- Sturdy powder-coated finish
- Fixed hook bars
- Coloured, numbered, hook bar strips
- Colour coded long key tabs supplied
- Removable control index (64 and 100 key capacity versions only)
- Additional keytabs available containing 20 each of red, green, yellow, black and blue

Key Capacity	Dimensions (mm)	H	W	D
20		255	190	70
30		305	230	70
42		305	230	70
64		450	300	80
100		550	380	80

386325

Description	Order Code	1+	Price Each	3+
Round Cornered Cabinets				
20 Key	882-4541	26.68	21.57	
30 Key	882-4568	31.52	28.44	
42 Key	882-4576	52.81	48.71	
Square Cornered Cabinets				
64 Key	882-4584	62.07	58.44	
100 Key	882-4592	93.38	89.08	
Accessories				
Key Tabs (Pack 100)	882-4649	18.01	16.95	

30, 42 or 70 Key



- Manufactured in steel
- Tough epoxy-polyester ivory paint finish
- Assorted colour key tags and rings
- Identification card included
- Fitted with lock and two keys are provided

Spare keys tabs are also available 20 of each colour: White, Red, Blue, Yellow, Green.

30 Key:	H=200, W=153, D=57	70 Key:	H=290, W=215, D=57
42 Key:	H=290, W=215, D=60		

213055

No. of Keys	Order Code	1+	5+	Price Each	10+	25+	50+
30	223-918	86.85	72.73	71.99	62.18	56.45	
42	309-7511	103.42	93.22	86.54	73.99	67.19	
100 Per Pack							
		1+	5+	Price Per Pack	10+		
Spare key tabs	309-7523	37.86	35.05	33.79			

Key Control Security Cabinets



Glass Fronted Version

KeySecure cabinets provide effective key control and security. These single key steel systems enable quick and positive identification of keys by location, building, function etc. Ideal for offices, schools, warehouses, garages. All cabinets (except the 20 hook versions) are supplied with a removable key index.

- Designed for wall mounting
- Strong cylinder lock with 2 keys
- Durable powder-coated finish
- Solid front doors
- Coloured, clip-in adjustable hook bars can be removed to suit different sizes of key holding
- Colour coded, numbered key tags (with rings) provided to suit hook bars
- 100 hook deep system available to house bunches and unusual shaped keys - ideal for estate agents and the motor trade
- 50 hook glass-fronted version available providing a quick visual check of key status

- Additional keytabs available - pack contains 20 each of red, green, yellow, black and blue
- Location cards available to track issue and return of keys

Key Capacity	Dimensions (mm)			Key Capacity	Dimensions (mm)		
	H	W	D		H	W	D
20	225	225	80	100	550	380	80
30	310	225	80	200	550	380	140
50 (Glass Front)	550	380	80	300	550	380	205

386327

Description	Order Code	1+	3+
Key Cabinets			
20 Key	882-4339	44.47	38.05
50 Key (Glass Front)	882-4487	144.10	138.03
100 Key	882-4398	170.00	144.68
200 Key	882-4428	172.20	156.77
300 Key	882-4436	388.43	322.22
Accessories			
Keytabs (Pack 100)	882-4665	18.01	16.95
Keyrings (Pack 10)	882-4673	2.26	2.13
Location Cards (Pack 250)	882-4681	5.64	5.30

Mechanical Combination Lock Key Security Cabinets



Key cabinets fitted with 3 wheel UL rated safe locks, with 1 million different combinations. Ideal for higher security situations and where the change of access codes is needed on a regular basis, for example staff changes or where large numbers of staff require access. All cabinets (except the 20 hook version) are supplied with a removable key index.

- Designed for wall mounting
- Strong cylinder lock with 2 keys
- Durable powder-coated finish
- Solid front door
- Coloured, clip-in adjustable hook bars can be removed to suit different sizes of key holding
- Colour coded, numbered key tags (with rings) provided to suit hook bars
- Additional keytabs available - pack contains 20 each of red, green, yellow, black and blue
- Location cards available to track issue and return of keys

Key Capacity	Dimensions (mm)			Key Capacity	Dimensions (mm)		
	H	W	D		H	W	D
20	225	225	80	50	350	380	80

386329

Description	Order Code	1+	3+
Key Cabinets			
20 Key	882-4347	150.75	141.92
50 Key	882-4371	198.70	187.08
Accessories			
Keytabs (Pack 100)	882-4665	18.01	16.95
Keyrings (Pack 10)	882-4673	2.26	2.13

Mechanical Digital Lock Key Security Cabinets



Key Cabinets with a robust mechanical digital push-button slam lock, providing 8000 different codes, and an easy turn knob opening. A 100 hook deep system is available to house bunches and unusual shaped keys - ideal for estate agents and the motor trade.

- Designed for wall mounting
- Durable powder-coated finish
- Solid front door
- Coloured, clip-in adjustable hook bars can be removed to suit different sizes of key holding
- Supplied with removable key index
- Colour coded, numbered key tags (with rings) provided to suit hook bars
- Additional keytabs available - pack contains 20 each of red, green, yellow, black and blue
- Location cards available to track issue and return of keys

Key Capacity	Dimensions (mm)			Key Capacity	Dimensions (mm)		
	H	W	D		H	W	D
50	350	380	80	100 (Deep)	550	380	140

386330

Description	Order Code	1+	3+
Key Cabinets			
50 Key	882-4380	212.22	199.80
100 Key (Deep)	882-4460	308.49	290.42
Accessories			
Keytabs (Pack 100)	882-4665	18.01	16.95
Keyrings (Pack 10)	882-4673	2.26	2.13
Location Cards (Pack 250)	882-4681	5.64	5.30

Padlock/Key Security Cabinets



Steel cabinets designed to meet the requirements of the machine industry by securing the padlocks and keys for isolating switchgear and machinery whilst maintenance is carried out. Hook bars are specially spaced and adjustable to allow for padlocks and keys.

- Designed for wall mounting
- Strong cylinder lock with 2 keys
- Durable powder-coated finish
- Solid front door
- Coloured, clip-in adjustable hook bars can be removed to suit different sizes of key holding
- Supplied with removable key index
- Colour coded, numbered key tags (with rings) provided to suit hook bars
- Additional keytabs available - pack contains 20 each of red, green, yellow, black and blue
- Location cards available to track issue and return of keys

Padlock capacity	Dimensions (mm)		
	H	W	D
25	350	380	140
50	550	380	140

386331

Description	Order Code	1+	3+
Padlock Cabinets			
50 Padlock	882-4509	239.76	225.70
Accessories			
Keytabs (Pack 100)	882-4665	18.01	16.95
Keyrings (Pack 10)	882-4673	2.26	2.13
Location Cards (Pack 250)	882-4681	5.64	5.30

Technical information at your fingertips

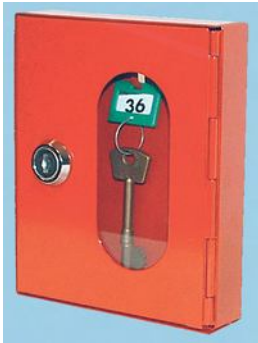
Over **352,000** technical datasheets available online.

Visit www.farnell.co.uk and look for the **Tech Info** heading in your search results.



Key Security & Accessories - continued

Emergency Key Boxes



A range of key boxes designed to house restricted keys at a locked door in case of emergency. The doors are secured either by a key or by a numbered seal to prevent unauthorised tampering.

- Single key position
- Steel construction
- Key lock versions available with glass or solid front
- Numbered seal version (glass fronted) comes complete with hammer, chain, and 2 seals
- Dims (H x W x D): 150 x 125 x 30mm

386326

Description	Order Code	Price Each	
		1+	3+
Key Boxes			
Key Lock (Glass Front)	882-4517	17.23	16.23
Accessories			
Keyrings (Pack 10)	882-4673	2.26	2.13
Seals (Pack 10)	882-4622	4.50	4.24
Spare Sight Glass	882-4690	1.13	1.07

Fire Door Key Box



- Boxes for emergency key storage
- Manufactured from sheet steel with glass panel in locking door
- Two door-locking keys provided
- Boxes finished in red epoxy polyester paint
- Model FD1 box provided with hammer on steel chain to break glass
- Hammer finished in white
- Model FD2 box without hammer

	H	W	D	List No.	Order Code
Box	160	120	40	FD1	720-1941
Box (no hammer)	160	120	40	FD2	720-1953
Spare glass	100	60	—	GL1	720-1965

211895

	Order Code	Price Each				
		1+	5+	10+	25+	50+
Model FD1 box	720-1941	36.91	34.12	32.49	29.27	28.09
Model FD2 box	720-1953	28.44	26.35	25.41	23.27	21.94
Spare glass	720-1965	1.55	1.47	1.44	1.34	1.26

Identi-Tag Key Ring



Key ring identi-tag with a printed name and address label insert. Identi-tag has a 1 key ring for holding keys.

- Supplied individually
- Colour may vary

227737

Order Code	Price Each		
	1+	10+	10+
354-1484	0.210	0.145	

Coming soon



Register your interest for items that are 'Coming Soon' at www.farnell.co.uk and we'll email you to let you know that they're in stock.

Mirrors



Standard Acrylic Mirrors



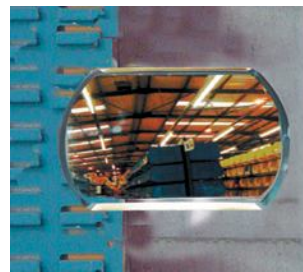
Standard round mirrors mounted with a rubber grommet onto an anodised aluminium back. Acrylic versions are impact resistant.

- Suitable for indoor/outdoor use
- Complete with plated steel extension and bracket
- Ideal for use in retail shops and on concealed driveways
- All glass confirms to ASTM B117 and DIN50. 021

333415.274228

Description	Order Code	Price Each	
		1+	5+
Acrylic			
390mm Dia.	470-5786	58.07	55.81
560mm Dia.	470-5798	84.00	80.73

Rectagon 'Slimline' Glass Mirrors



- Standard glass mirror mounted with a rubber grommet on an anodised aluminium back
- Ideal for low ceilings in a retail environment
- Complete with plated steel extension arm and bracket
- All glass confirms to ASTM B117 and DIN50. 021

333414.274224

Description	Order Code	Price Each	
		1+	5+
260x360mm	470-5762	52.06	50.04
390x560mm	470-5774	59.96	57.64

Computer Equipment Security

Screw-On Lock Kit



- Deterrent against theft for computers and office equipment
- System incorporates 2 screw-on securing brackets to be attached to existing screw locations on the base unit and a metal plate to be bonded to equipment such as a monitor
- 1.5 metre cable secures the equipment to a permanent object via a padlock and keyhole bracket

Contents: 2 screw on brackets, metal plate, Superbond adhesive, keyhole bracket and 40mm padlock.

206014

Order Code	Price Each	
	1+	5+
501-906	11.40	9.89

Lock Slot Kit



- Highly effective security against theft
- Kit contains slot cover with metal bracket and a plate which is to be bonded to the monitor
- 2 metre steel cable threads through these fixings and is padlocked to a permanent object
- Uses a vacant expansion slot

Contents: 2m coated steel cable, lock slot cover, keyhole bracket, metal plate, Superbond adhesive and 40mm padlock.

206029

Order Code	Price Each	
	1+	10+
501-918	19.36	16.76

Alarm Kits - Wireless

4-Zone Compact Wireless Alarm System - 434MHz



The 3400 is a low-cost, wire-free alarm system with a superbly compact control panel. It features 4 zones with the zone 4 LED also reporting signal level quality. Day to day operation is performed using the handy remote control included or via the control panel keypad. It is semi-programmable and features a low cost external siren with cable that requires connection to the control panel. All detectors are wire free including the handy remote control which operates through walls and ceilings. The system is expandable and a low battery within any detector is reported on the control panel by alternate flashing of the low bat LED and the Zone LED.

- Part-arm facility
- 4 Zones including entry/exit zone and panic/tamper zone
- Wireless anti-scan function
- Low battery indication per zone
- Built-in panic button
- 110dB siren
- Mains power failure indicator
- Battery back-up facility (battery included)

Optional accessories are also available including the extender unit which is suitable for outbuildings

374169,374139

Description	Order Code	1+	3+
Alarm System	830-5560●	105.25	99.82
Accessories			
Remote Control	830-5595●	22.04	20.42
Wireless PIR Detector	830-5609●	31.84	29.67
Door/Window Magnet	830-5676●	22.11	20.42
Dummy Bell Box	840-3457▲	22.97	21.24

4-Zone Wire-Free Alarm System with Solar Bell Box - 434MHz



A totally wire-free intruder alarm system that can be installed in less than 1 hour. It is operated on a day to day basis by a small key fob remote controller and because the entire system works using RF all remotes and detectors operate through walls and ceilings. It has 4 zone actions and installation can be customised using zone selection switches in each of the detectors. As well as the ability to update the system with additional detectors it is also possible for the system to switch from direct remote control operation to panel operation using any AEI Security wireless control panel. A system test feature allows engineers to check each detector with audible warnings and an intelligent jamming detection feature is also included.

- No wiring required to siren
 - No mains power required
 - 4-zone operation with entry/exit zone, instant and PA zones
 - 1 dedicated entry/exit zone
 - Powerful 115dB twin siren
 - Selectable siren duration
 - Easy to operate remote control
 - Jamming detection feature
 - Solar panel-recharges battery all year round
 - Battery lasts up to 3 years
- Kit contains:**
- 1 x Wireless PIR
 - 2 x Magnetic Detectors
 - 1 x Remote Control
 - All Batteries included

374166,374136

Description	Order Code	1+	3+
Alarm System	830-5528●	117.35	114.84
Accessories			
Remote Control	830-5595●	22.04	20.42
Wireless PIR Detector	830-5609●	31.84	29.67
Door/Window Magnet	830-5676●	22.11	20.42
Dummy Bell Box	840-3457▲	22.97	21.24

Troubleshooting tips



Chat live online to one of our technical engineers at www.farnell.co.uk

7-Zone Wireless Alarm System with Solar Bell Box - 434MHz



System features include:

- Totally wire free, including the siren
 - Fully-featured wireless control panel
 - Easy DIY installation
 - Remote controlled
 - External siren with solar panel
 - 7 zone operation
 - Dedicated zones for tamper, instant and PA
 - Powerful 110dB twin siren system
 - All batteries included
 - Plus many more features
 - Additional accessories are also available
- Kit Contents:**
- 1x External solar-powered siren
 - 1x Control panel with battery backup
 - 2x Wireless PIR
 - 1x Magnetic detectors
 - 1x Remote control

Based around the stylish 5850 control panel and the trusted quality of the SolarGuard series, this system combination creates a totally wireless home security system with tremendous programmable functions and wireless communication throughout. With 7-Zones, installers can make a fully featured installation without compromising on features within just a few hours and eliminate all the hassle of cabling. This professional wireless system is fully programmable and features digital communication between the system's detectors and the control panel, via a special frequency allocated to wireless burglar systems and utilizing narrow band receiver technology. It transmits through walls and ceilings, providing complete protection around your home. The system can be set up to any one of over 500 different frequency channels, thus eliminating any possibility of duplication. As the control panel monitors any number of detectors running on the system, digital codes are transmitted to the SolarGuard when activated creating an alarm condition. Each detector can be set to any one of the zones via simple switches inside the detectors enabling any type of detector to be set to any one of the zones. An Rx. Light on the control panel provides an indication of an accurately received transmission and will indicate poor reception level conditions at the control panel site. A low battery level indicator, a chime zone and part arm facility are other notable features.

374167,374137

Description	Order Code	1+	3+
Alarm System	830-5536●	210.42	204.19
Accessories			
Remote Control	830-5595●	22.04	20.42
Wireless PIR Detector	830-5609●	31.84	29.67
Door/Window Magnet	830-5676●	22.11	20.42
Dummy Bell Box	840-3457▲	22.97	21.24

7-Zone Wireless Alarm with Telephone Dialler - 434MHz



A totally wire-free multi-zone security system with amazing 2 way dial-up feature, which allows you to set the system to call your mobile or office (4 locations max.) should the system be activated. You can also dial-up at any time to check status and listen in to your property, which makes it ideal for any home, office or small business.

- Incredibly easy to install - this alarm system can be up and running in around an hour
- Radio technology for a secure installation and easy operation
- Solar technology provides an extremely long operational lifespan of 10 years +
- No messy wiring around your home
- Dial in and listen to activity in your home at any time (pin code protected for privacy)
- Know immediately if a burglary is taking place at your property
- 7 Zone operation
- Complies with BS6707, BS6799 Class 3, (Class III jamming detection) MPT1340 EN5022-1:92, EN-50082-1:92

Kit Contents:

- Autodialling control panel
- Wireless magnetic contact
- 2x Wireless PIR
- SolarGuard external siren
- 6v Sealed lead acid battery
- Remote keyfob control



Alarm Kits - Wireless - continued

7-Zone Wireless Alarm with Telephone Dialler - 434MHz - continued

374168.374138

Description	Order Code	1+	3+
Alarm System	830-5544●	239.30	232.87
Accessories			
Remote Control	830-5595●	22.04	20.42
Wireless PIR Detector	830-5609●	31.84	29.67
Door/Window Magnet	830-5676●	22.11	20.42
Dummy Bell Box	840-3457▲	22.97	21.24

434MHz Wireless Alarm Accessories



A full range of accessories to expand or upgrade your AEI 434MHz wireless alarm system.

1 - Wireless Extender - 830-5587

Ideal for outbuildings, bungalows and larger houses, this range extender relays signals from your farthest sensors an additional 25-40 metres.

- Compatible with all AEI wireless alarms
- Site code setting so only your alarm signals are relayed
- Set up in minutes
- Supplied with power supply and battery backup

2 - Wireless Remote Control - 830-5595

Any number of remote controls can be used with any wireless system and operation is protected by the internal code set. The battery is pre-fitted and once the security code has been set up the unit is ready to use.

3 - Wireless PIR Detector - 830-5609

Protect up to 8 metres with this wirefree movement detector. Any number of PIRs can be added to your system, and with a unique sleep mode feature they will help preserve batteries for up to 3 years.

- Compatible with all AEI wireless alarms
- Transmitting range up to 40 metres
- Test mode for easy setup

4 - Additional Active Bell Box - 830-5617

No wiring or mains power required for this additional bell box, as the solar panel recharges the battery all year round.

- Powerful 110dB twin siren
- Not compatible with 3400 version system (830-5560)

5 - Wireless Remote Keypad - 830-5650

The remote control keypad is an ideal accessory for the household with more than one entrance.

- Arm, part arm and disarm your system from this keypad
- Programmable 4 digit PIN number
- Compatible with all AEI wireless alarms (will not part arm SG5850 control panels)
- Single battery operation - no cables required
- Discreet touch sensitive keypad

6 - Wireless Door/Window Magnet - 830-5676

An ideal addition for locations not easily covered by a PIR detector, such as outdoor sheds & conservatories, as well as internal doorways.

- Add as many wirefree sensors as required to your system
- Protects a door or window against unlawful entry
- Transmitting range up to 40 metres
- Battery lasts up to 3 years
- Compatible with all AEI wireless alarms

7 - Smoke Detector - 830-5684

Add smoke detection to your wireless alarm completing your security solution.

- Suitable for use with all AEI wireless alarms
- Built-in transmitter module with 9 bit site code and selectable zone
- Low battery warning
- 12-25 metre range
- Battery: 1 x 9V PP3 (supplied)

8 - Dummy Bell Box - 840-3457

An essential visual deterrent which looks just like an active bell box. Includes fixing screws.

380878.374201

Description	Order Code	1+	3+
Remote Control	830-5595●	22.04	20.42
Wireless PIR Detector	830-5609●	31.84	29.67
Door/Window Magnet	830-5676●	22.11	20.42
Dummy Bell Box	840-3457▲	22.97	21.24

Alarm Kits - Wired

PIR Autodialler & Alarm



Motion Detection Alarm with Telephone Dialler.

- Infra-red beam detects movement to 20 feet away
- Optional ultra-loud 125dB alarm
- Easy to program 4 digit code
- No wiring, easy installation
- Auto dialling system to preset phone number
- Set 3 programmable phone numbers to dial when motion has been detected
- Siren sounds 20 seconds after first telephone number has been dialled, or it can be put on silent alert
- Record your own 6 second message

416745.409028

Order Code	1+	Price Each	5+
101-3179	21.21		20.22

Complete Alarm Security Kit



An ideal kit for the larger installation where perhaps more zones are needed or could be needed in the future. With 8 zones, plus personal attack facility and tamper. The Accenta mini panel comes with remote keypad, enabling the main panel to be located out of the way (under the stairs or in a loft) leaving the discrete remote keypad in an easy access location. All that is required is 6 core alarm cable (not supplied)

- 3 part set programmes
- Personal attack facility
- Global tamper
- Chime mode for door entry alert
- 6 Digi outputs
- Duress code
- Service reminder warning
- Non-volatile memory for program protection

Kit contents:

- 1 x Accenta Mini G3 control panel
- 1 x remote keypad
- 1 x Reson8 bell box
- 4 x Activ8 18m quad PIRs
- 1 x 1.2Ah battery
- 2 x door contacts

244979

Order Code	1+	Price Each	3+
891-3609	111.02		110.24

Complete Alarm Security Kit

Honeywell



Security Kit contains: -

- 110db high powered polycarbonate bell box
- Dummy dell box
- 4 x PIRs (with creep zones)
- 12V/2Ah rechargeable Yuasa battery
- 2 x Surface mount door contacts
- 100m of 6 core cable
- Fuse spur
- Easy to follow step-by-step instructions

A fully equipped alarm system for home or business use. With a simple to operate remote LED keypad (for discreet location) and 8-zone control panel and all the components to set up a standard system, with the option to upgrade.

244980

Order Code	1+	Price Each	4+
427-4593	152.17		146.88

Premium service without a premium price



With thousands of prices already reduced, go online to see our most up-to-date pricing:
www.farnell.co.uk

Control Panels & Remote Keypads

8-Zone Metal Alarm Panel with LCD Keypad



A fully programmable 8-zone alarm panel that is designed to offer maximum flexibility and ease of use. Up to 4 keypads can be added to the system, each with 4 digit access codes.

- Accepts the ScanProx module and tag for easy setting and unsetting of the system
- Can be connected to a speech dialler or plug-by communicator via a wire-in communications output
- Allows for flexibility in configuration, as it has three fully programmable outputs
- 250 event log which is downloadable, printable, date and time stamped to comply to ASI (Association of British Insurers) requirements
- Ideal for domestic installations

386854.345005

Order Code
890-2470Price Each
1+ 50.79
5+ 48.86

Sterling 10 Keypad and Endstation - LCD



- LCD keypad and endstation housed in a polymer enclosure
- 8 fully programmable zones
- 2 dedicated zones
- 4 set configurations
- Up to 5 remote keypads may be used
- Keypads wired using 4 core cable
- 8 codes
- 100 event memory
- 6 communicator outputs
- Installer and user friendly
- Non volatile memory
- Optional chime mode

Voltage
Supply
240V 50HzLow Voltage
Output
13.8V dc 1A maxDimensions
340x280x101mm (main panel)

244982

Descriptions	Order Code	1+	4+
Keypad and Endstation	427-4623	56.15	54.13
Additional Keypad	427-4635	50.45	48.91

Autodiallers & Digital Communicators

Telephone Autodiallers



Activated burglar alarms are all too often ignored as being a noise nuisance. If an alarm is activated, this device will ensure a response by calling any combination of up to four different selected phone numbers (including mobile phones). The unit stores up to three pre-recorded messages which can be used to warn of three different situations. These are specific to your alarm and can be changed whenever required.

- Works with any alarm system
- No monitoring fees to pay
- Instant acknowledgement confirms successful calls and stops unnecessary calls to others

Input voltage 11.5 - 14v dc
Current consumption
Stand-by 35mA
Active 70mA
Trigger inputs A, B, C +ve or -ve applied, max 24V

- Easy to use and program
- Can also monitor fire, personal attack or medical alert

Phase length (A, B, C, O)
Message length
REN value
Exchange compatibility 890-2143
Dimensions (W x H x D) x x

227748,386137

	Order Code	1+	5+
SD1+ European Model	890-2143	104.07	103.32
SD1+ UK Model	354-1678	96.25	95.56

SD2 Telephone Autodialler



The SD2's versatility means it can be used in a variety of applications, such as for monitoring electrical equipment, as a warning system and as an alarm verification tool when used in conjunction with a control panel. The SD2 has a multitude of benefits for both the installer and the customer. For installers it is unfailingly reliable, has a sophisticated audit trail and is easy to programme and install. As far as the customer is concerned, not only does the SD2 look appealing with its blue LCD display, it also offers a useful remote access facility, enabling customers to listen or talk to their premises via an integral microphone and loudspeaker. The SD2 even has two programmable outputs which can be linked to home automation equipment. On activation, the SD2 can contact up to 10 telephone numbers. It also has a restore message facility, which means that if it is set to monitor temperature (for example in a refrigerator or an elderly person's home) and the temperature rises or falls substantially, the SD2 will notify the recipient of an alarm activation. If the temperature stabilises on its own, the SD2 notifies the recipient that they do not need to take action. The SD2's remote trigger function could allow end-users to reset their alarm system from a mobile phone.

- Remote access for telephone
- SMS text message facility
- Built-in thermometer
- Simple menu-driven programming
- Priority call routing
- Audio event recording

- Two-way speech facility, ideal for the elderly, enables talk to and listen in communication
- Facility to record messages, rather like an electronic noticeboard
- Two outputs can be selected for use with home automation, such as turning on lights or heating

Input voltage 11.5 - 14v dc
Current consumption:
Stand-by 35mA
Active 70mA

Trigger inputs A, B, C +ve or -ve applied, max 24V
Operating Temperature 0°C to +40°C
Dimensions (W x H x D) 104 x 150 x 30mm

386655.410966

Order Code
848-6239Price Each
110.32

Passive Infrared Detectors (PIRs)

IS-215T Passive PIR

Honeywell



- Flush Mounting
- Installer Friendly terminal blocks
- Look downs zones
- Sabotage-resistant lens design
- Selectable sensitivity
- Tamper switch
- Bug Guard

244983

	Order Code	1+	4+
	427-4647	8.53	8.35

Magnum PIR



- Dual element Pyro-electric sensor
- Advanced temperature compensation
- Patented independently floating thresholds
- Adjustable range detection of 5-12M
- Magnetically shielded relays
- Patented independently floating thresholds
- Sealed optics
- RFI immunity to exceed EN50130-4
- Alarm LED (selectable)
- 3mm electrostatic shielded case
- Operating temperature -30 to 70°C
- Storage temperature -40 to 80°C
- 5 year manufacturers warranty
- Dimensions (LxWxD): 88x60x42mm
- Weight: 80g



Passive Infrared Detectors (PIRs) - continued

Magnum PIR - continued

High-quality stylish PIR sensor.

386519.386141.343225

Description	Order Code	1+	5+
PIR	890-2224	8.51	8.19
Accessories			
Bracket	890-1937	3.54	3.52

Colt XS



An internal, high performance passive infrared detector with the following features:

- Sealed optics
- White light filter
- Analogue pulse count which will produce an alarm condition on detection of 1, 2 or 3 pulses
- LED for walk testing which can be disabled
- High RFI immunity to virtually eliminate false alarms
- Surface mounted electronics
- Screw fixing front cover
- A cable channel to make installation easier

Operating voltage
Current consumption
Relay output
Tamper switch
Detection system
Operating temperature
Optical system
Mounting
Optimum height
Dimensions
Casing
Colour
Weight

9 - 16V dc (12 V nominal)
quiescent at 12V
Form A, N.C voltage free contacts with 4.7Ω series resistor
N.C. voltage free contacts 12V max. 50mA max.
Low noise dual element pyroelectric sensor
-10°C - +50°C
Fresnel lense array
Wall, corner or ceiling
61 x 52 x 39.5mm
Polished ABS 3mm thick
White

227750

Order Code	1+	Price Each	10+
354-1708	12.08		11.92

Equinox E Microwave & PIR Detector



The Equinox E features microwave and PIR detectors in one unit. Ideal for problem areas such as conservatories or commercial premises where false triggering of PIRs may be encountered. Both detectors need to register before activating the alarm condition.

- 2 Year Guarantee

PIR Features

- IFT technology
- Dual edge triggering
- Analog pulse count
- PIR walk test

Microwave Features

- IFT technology
- State-of-the-art microwave detection technology
- Microwave "creep zone" coverage
- Calibrated range adjustment 0-15m
- Precision analog filter electronics to eliminate strip light noise (50Hz and 60Hz versions)
- Microwave walk test

Combined Features

- Exceptionally low power consumption
- High RFI immunity
- Surface mount electronics
- Cable channel
- Low profile case

Operating voltage 12 V nominal
Sensor Dual element pyroelectric
Operating temperature -10°C - +50°C
PIR coverage 3 planes, 54 zones 90° volumetric 15m coverage pattern
Microwave coverage 90° volumetric 15m coverage pattern
Dimensions 124 x 64 x 44mm
Colour White

227753

Order Code	Price Each
354-1745	39.20

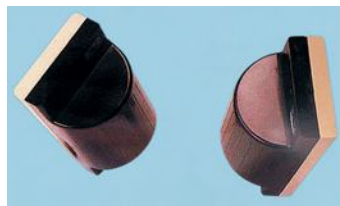
FREE global legislation support



RoHS, REACH, WEEE, EuP,
Batteries Directive - we've got it
covered at:
www.global-legislation.com

Beam Detectors

M20 Multi-Purpose Internal/External Infra-Red Beam



- Built in Heaters for reliable external use
- Wide angle optics for non critical alignment
- Advanced anti-sun circuitry
- Can be linked up in 4's
- Ideal for farm buildings, residential properties and domestic applications

245004

Order Code	1+	Price Each	4+
427-4672	67.94		67.45

Bell Boxes

CLASSIC Bell Box and Dummy



Super slim, self-contained bell box includes twin alternating, LEDs strobe, timed SAB c/w nicad, high intensity piezo sounder plus rugged polypropylene cover, high impact polystyrene back plate, polycarbonate lens and all electronics in a polycarbonate case. Dimensions (H x W x D) of bell boxes: 315 x 185 x 70mm.

- Dual fail safe cut-off timer
- Sounder output 114dBA @ 1m
- Metal protective shroud available

227755

Order Code	1+	Price Each	10+
Classic Bell Box 354-1782	25.64		25.20

Indoor Sounders & Extension Speakers

Sapphire Extension Speaker



- Compact extension speaker
- High impact white ABS
- Dimensions (H x W x D): 118 x 118 x 45mm

227759

Order Code	1+	Price Each	3+
Standard Speaker 16 ohms 354-1976	4.53		4.40

Intruder Alarm Accessories

Personal Attack Switch (Latching)



- Stainless steel case fitted with reed switch contact
- Metal reset key

H=22, W=57, D=70

SSW17X/212859

Order Code	1+	Price Each	5+	10+	25+
101-793	7.74		7.20	6.88	6.67

Impaq Shock Sensors

Texecom
FOCUS ON SECURITY


Impaq Plus and Impaq E features:

- Increased dual sensitivity range
- Easy set-up procedure
- Fully adjustable detection
- Ultra high, false alarm immunity
- Conformally coated electronics
- Selectable LED indication

Additional Impaq Plus features:

- New 16Ω opto relay
- Tri-colour LED indication
- Latching and first to alarm indication
- Selectable, flashing comfort LED
- Digital signal processing

245018

Description	Order Code	1+	4+
Impaq Plus	427-4775	12.76	12.46

Self-Adhesive Foil and Terminating Block



- Self-adhesive foil, for glass windows, doors etc
- Terminating blocks with 22mm foil centres manufactured in clear Acrylic plastic
- Extended foil protection plate

212880

Order Multiple=5	Order Code	5+	50+	100+
Terminating block	101-798●	0.52	0.49	0.47
Order Multiple=1		1+	10+	25+
Foil (50m reel)	101-799	2.16	2.07	1.95

Contact Sets



Surface Mounting



Recessed - Round



Recessed - Square

	Body Dimensions			Flange Dimensions			No. Contact/ Leads	Order Code
	H/L	W	D/Dia	H/L	W	D/Dia		
Surface mounting	13.5	65	13	—	—	—	—	101-790
	(13.0 magnet)	(10.9 magnet)						
Recessed - square	16	—	19	22.0	35.0	1.0	—	101-789
Recessed - round	28.5	—	—	1.0	—	19.0	(200mm leads)	101-788

212939

	Order Code	1+	10+	25+	100+
Surface Mounting	101-790●	1.60	1.44	1.35	1.28
Recessed - square	101-789●	1.71	1.54	1.44	1.35
Recessed - round	101-788	2.76	2.46	2.35	2.23

Roller Shutter Contact Set



- Encapsulated reed housed in cast aluminium
- Stainless steel flexible conduit
- Contacts NC in the presence of a magnet

	H	W	D
Reed assembly	15	175	50
Magnet assembly	70	85	35
Lead length: 450 (including conduit)			

212887

Order Code	1+	10+	25+	100+
101-791	13.88	12.47	10.79	9.74

Over 480,000 products online



08447 11 11 11

RoHS ● Compliant
▲ Non-compliant

Junction Box

Type 1
H=18, W=80, D=24Type 2
H=18, W=65, D=65

212903

- White PVC fitted with lid contacts
- 5 contacts in standard 8 in type 2

	Order Code	1+	10+	25+	100+
Type 1	101-794●	0.64	0.63	0.60	0.58
Type 2	101-797●	1.24	1.11	0.95	0.87

Pressure Mats

DEFENDER
SECURITY


- Floor pressure mat sensors, designed to detect a person walking over them
- Only 3mm thick - suitable for use under carpets
- 4 wires - 2 normally open, closing when a person treads on the mat, and 2 providing a security loop for 24 hour monitoring (required for the security industry)
- Version available that is particularly suitable for use on stairways

Operating Voltage	25V dc/ac	IP Rating	IP64
Switching Current	0.25A	Operating Temperature	-5 to +45°C
Wattage	10VA		

429200.429195

Description	Size	Order Code	1+	5+
Stairway	595 x 170mm	114-6761	3.77	3.48
Standard	720 x 390mm	114-6763	4.87	4.48
Large	720 x 560mm	114-6764	6.24	5.73

CCTV Observation Systems

Multiplexer Colour Observation System + 4 Cameras **BOSCH**
 and Digital Video Recorder


The Bosch Multiplexer Observation System is unique for its ease of installation, user friendly menu system, comprehensive accessory range and cost effective price for digital CCTV. 'Eazeo' cameras are supplied with 15m of system cable, which plugs into the monitor and the other end into the camera, making 'Eazeo' easy to install. The system will accept a maximum of 8 cameras; switching between cameras, view as a quad display or a cameo of 8 cameras when fully loaded. The multiplexer, built into the master monitor, will enable full screen recording of all cameras whilst viewing in any mode. The system digital recorder, included, completes the 'Eazeo' digital bundle for outstanding CCTV coverage.

- Digital processing colour cameras for outstanding picture quality
- 14" monitor with digital processing
- Fully functional system digital recorder
- Multi-screen viewing modes
- Video motion detection triggers alarm when movement is detected from cameras
- Audio-microphones built into the cameras
- Suitable for most indoor or outdoor CCTV applications
- Cameras can be mounted externally with the optional 811-4706 camera housing
- Camera cable lengths up to 600m per camera
- System can be connected to the digital 'Eazeo' recorder or time lapse unit
- Comprehensive alarm input and output options to activate additional alarms
- Two additional slave monitors can be added, which will follow the main monitor
- 3 year manufacturer's warranty

CCTV Observation Systems - continued

Multiplexer Colour Observation System + 4 Cameras and Digital Video Recorder - continued

372145.344737

Order Code	1+	Price Each	5+
811-4900	1,733.59		1,633.09

Colour System Accessories



A range of accessories designed for the Bosch Colour Switcher and Multiplexer Systems.

372146.344738

Description	Order Code	1+	Price Each	5+
3mm Camera	811-4722	154.22		145.27
3-6mm Varifocal Camera	811-4730	187.38		176.51
5-50mm Camera	811-4749	301.99		284.49
2.8-10mm 'Eazeo' Camera	811-4714	208.20		196.12
Mini Dome Camera	811-4757	154.22		145.27
PIR Camera	811-4781	182.50		171.92
Smoke Detector Camera	811-4790	182.50		171.92
Dummy Camera	811-4692	33.42		31.48
Slave Monitor	811-9422	328.99		309.91
Interface	928-9836	53.43		51.39

CCTV - Wireless

500m Wireless Video Transmission - 2.4GHz



- Up to 500m range (1km when used with optional antenna)
- 4 RF channels - up to 4 transmitters can be used with one receiver
- Sequential switching at receiver
- Line In/Line Out audio
- Lightweight design
- Supplied with mounting bracket
- IP 65 weather-proof housings available separately (one housing per transmitter or receiver)
- Compliant with ETSI EN 300-440-1

	Transmitter	Receiver
Supply Voltage	12Vdc	12Vdc
Input Sensitivity	-	-90dBm
Output Power	10mW	-
Current	130mA	300mA
Video Input/Output	1V p-p via BNC	1V p-p
Dimensions (mm)	150 x 65 x 30mm	150 x 65 x 30mm
Weight	300g	300g

419107.419125

Description	Order Code	1+	Price Each	5+
2.4GHz Transmitter	108-1965▲	157.99		156.16
2.4GHz Receiver	108-1966▲	191.38		188.55
Antenna	108-1967▲	149.70		147.84
Housing	108-1968▲	100.75		99.54

CCTV Cameras - Monochrome

Monochrome PCB Camera with Audio



A subminiature, monochrome, CMOS PCB mounted camera complete with a high sensitivity condenser microphone and a 3.6mm lens. This camera also has video out and 12V dc in utilizing an open-ended 4 core flying lead. The microphone is on a two core flying lead, which is ideal for covert applications where the microphone can be remotely mounted away from the camera body.

Scanning system	2:1 Interlace
Synchronisation	Internal
Resolution	380 TVL
S/N ratio	>48dB
Min illumination	0.2Lux at F1.2
Electronic shutter	1/50 - 1/6000
Operating voltage	12Vdc

227767

Order Code	1+	Price Each	3+
354-2099	28.72		28.51

Monochrome PCB Camera



- 1/3" Sony CCD
- High Resolution available in 3.7mm lens
- Superior image quality
- Low light sensitivity (0.1lux)
- 3.7mm lens or conical pinhole
- Electronic Auto Iris

Order Code	433-0067	433-0079	433-0080
Resolution (TVL)	420	420	600
Lux Level	0.1 lux	0.1 lux	0.1 lux
Lens	3.7mm	Conical Pinhole	3.7mm
Voltage/Power	12V dc	12V dc	12V dc
Power consumption	100mA	100mA	100mA
Dimensions (mm)	32 x 32	32 x 32	32 x 32

248587

Lens	Order Code	1+	Price Each	4+
Standard resolution				
3.7mm	433-0067	36.39		36.13
Pinhole	433-0079	36.39		36.13
High Resolution				
3.7mm	433-0080	77.63		77.09

1/3" Miniature B/W Encased Cameras



- Extremely small metal encased camera
- Full pan and tilt bracket
- Excellent low light sensitivity
- Wide angle or pinhole format
- 12V operation

Technical Data	
Resolution (TVL)	420
Min Illumination	0.2 Lux
Dimensions (LxW)	29x29mm

339318.264754

Description	Order Code	1+	Price Each	5+
Wide Angle (3.7mm)	509-8865	58.73		56.85
Pinhole	509-8877	64.23		62.18

Medium Resolution B/W Bullet Camera



- Measures just 48 x 23 mm (1 x 1/2")
- Weatherproof aluminium casing
- 3.6mm fixed lens
- 1/3" CCD, 380TVL resolution
- 0.5 lux low light limit
- Electronic iris
- 12V dc operation
- Supplied with bracket

227768

Lens Fitted Camera	Order Code	1+	Price Each	3+
3.6mm	354-2105	67.69		66.58

Waterproof Monochrome Bullet Camera



A miniature bullet style camera that is submersible, has built-in LED illumination

Features:

- 1/3" CCD monochrome camera
- 380 TVL
- 0.1 Lux
- 3.6mm lens
- 12V dc
- 54mm diameter

245021

Order Code	1+	Price Each	+
427-4817	101.26		--

1/3" CCD Monochrome Cameras



A range of high quality bodied CCD cameras with medium and high resolution models

- 1/3" Sony HAD chipsets
- Medium and Hi resolution models
- Dual 12v DC/24v AC or 240v AC
- Direct or Video drive Auto iris capability
- DC level adjustment
- Backlight compensation switchable on/off
- AI connector on side for shorter lens leads
- Low voltage models feature screw type power connections
- Sturdy metal case

Lens not supplied

Order Code	433-0377	433-0389	433-0390	433-0407
Resolution (TVL)	420	420	550	550
Sensor	1/3" SonyHAD CCD	1/3" Sony CCD	1/3" Sony CCD	1/3" Sony CCD
Lux Level	0.2 (f1.4)	0.2 (f1.4)	0.02 (f1.4)	0.02 (f1.4)
Shutter Speeds	1/50 to 1/100000s	1/50 to 1/100000s	1/50 to 1/10000s	1/50 to 1/100000s
Lens mount	C or CS mount	C or CS mount	C or CS mount	C or CS mount
Iris	AI/DD	AI/DD	AI/DD	AI/DD
Voltage/Power	12V dc	240V ac	12V dc	240V ac
Dimensions (HxWxD)	134 x 50 x 54	134 x 54 x 50	134 x 54 x 50	134 x 54 x 50

248680

Supply Voltage	Order Code	1+	Price Each	4+
Medium Resolution				
12V dc	433-0377	66.37		65.90
240V ac	433-0389	66.37		65.90
High Resolution				
12V dc	433-0390	98.50		97.81
240V ac	433-0407	98.50		97.81

Dinion™ Mono Cameras



- 1/3" CCD professional quality cameras
- Ready to use straight from the box
- Auto detection of lens type
- Lens wizard for easy back focus adjustment
- High sensitivity
- Advanced digital signal processing
- Outstandingly easy to use
- Suitable for indoor or outdoor use

- Ideal for 90% of applications
- Available in standard and high resolution versions

Lens not supplied

Order Code	430-8141	430-8153	430-8177
Resolution (TVL)	380	380	570
Sensor	1/3" CCD	1/3" CCD	1/3" CCD
Lux Level	0.15	0.15	0.1
Shutter Speeds	1/50 to 1/50000	1/50 to 1/50000	1/50 to 1/50000
Lens	CS-Mount	CS-Mount	CS-Mount
Iris	EI/AI	EI/AI	EI/AI
Voltage/Power	10.8 to 39V dc	85 to 265V ac	85 to 265V ac
Connector	BNC	BNC	BNC
Dimensions (HxWxD)	122 x 66 x 58	122 x 66 x 58	122 x 66 x 58

248156.383132

Supply Voltage	Order Code	1+	Price Each	3+
Medium Resolution				
230V ac	430-8153	99.05		97.04
High Resolution				
230V ac	430-8177	154.36		150.54

External Day/Night camera



A superb quality camera providing both colour images during the day and b/w images at night. An inbuilt photocell detects low light and switches on an array of high density infrared LED's. The camera is supplied in a modern design housing which includes sunshield and wall bracket.

- 1/3" Sony super HAD CCD
- 12 high density Infrared LED's
- 10 mtr range for LED's
- IP-65 ideal for external use
- Incl. wall bracket & sunshield
- Electronic auto iris

Resolution (TVL)
Lux Level
Shutter Speeds
Lens

380 mA
0 luxLEDs on
1/50 to 1/100000 sec
6mm

Voltage/Power
Power consumption
Dimensions (L x Dia)

12V dc
250 mA
90 x 50 mm

248640

Order Code	1+	Price Each	+
433-0146	149.52		--

Day/Night Zoom Bullet Camera



- High resolution 500TV lines in colour
- Vandal resistant housing
- 10 x Optical Zoom
- Selectable 2 x, 4 x, 8 x Digital Zoom or OFF
- TRUE Day/Night, Mechanical Cut-Filter
- 33-piece Infra-Red LED Assembly with CDS Sensor
- On Screen Display (OSD) Menu
- DNR (Digital Noise Reduction) - 4 levels of noise reduction
- Saves up to 70% HDD Storage with DNR, using MPEG Codec
- Selectable electronic shutter control, FLK/ESC/Manual
- Selectable white balance, ATW/AWC/Manual

- Selectable back light compensation, H/M/L/Off
- Selectable gain control, H/M/L/Off
- Sens-up - maintains luminance levels in low light x128
- Privacy masking - 4 programmable zones
- Mirror function - horizontal image inversion
- Camera Title
- IP67 rated
- Dual Voltage, DC12V/AC24V
- Fully Cable Managed Bracket
- Sunshield

Image Sensor
Horizontal Resolution
Effective Pixels
Video Output
Electronic Shutter

Sony 1/4" Super HAD CCD
500 TVL Colour
570 TVL Monochrome
752 (h) x 582 (v)
CVBS 1.0V p-p ~ 75Ω
ESC (x128, 1/50 to 1/20,000 sec.)
Manual (x128, 1/50 to 100,000 sec.)
Flickerless - 1/100 Sec.

Lens

10 x Optical Zoom (3.8-38.0mm F1.8 to F2.8)
Selectable 8 x Digital Zoom (Off/x2/x4/x8)
H: Approx. 51.2° (Wide) to 5.58° (Tele)
V: Approx. 39.3° (Wide) to 4.27° (Tele)

Angle of View

LED
Power consumption
Power supply
Dimensions (DiameterxH)
Operating temperature
Weight

33-piece LED Assembly with CDS Photosensor
800mA Max. with IR LEDs ON using DC12V
12V dc or 24V ac
145x100mm
-10°C - 50°C
900g

450295.450232

Description	Order Code	1+	Price Each	5+
Camera	129-4899●	259.81		250.90
Remote Control	129-4900●	15.63		15.15

Day/Night Bullet Camera



CCTV Cameras - Monochrome - continued

Day/Night Bullet Camera - continued

- High Resolution
- Sony 1/3" Super HAD colour CCD
- Weatherproof anodised aluminium body, IP-65 rated
- 95 piece infra-red LED assembly
- CDS automatic switching as light fades
- Minimum range of 40m at night
- Cable managed bracket
- Includes sunshield
- 12V DC power supply, not supplied

Image Sensor	Sony 1/3" Super HAD CCD	Lens	6mm
Effective Pixels	752 (h) x 582 (v)	Video Output	1V p-p~75Ω
Resolution	480 TVL Colour	Camera dimensions	122.5x110mm
Electronic Shutter	1/50 - 1/100,000 sec.	Bracket dimensions	130mm (l) x 115mm (h)
Sensitivity	0 lux IR LEDs on	Power supply	12V dc
IR LEDs	95 x IR LED assembly, 850nm	Power consumption	1.5A
Signal to noise ratio	Greater than 48dB (AGC off)	Operating temperature	-10°C - 50°C
Backlight compensation	Selectable	Operating humidity	10% ~ 90%
White Balance	Automatic	Weight	1.7kg

450299.450252

Order Code	1+	Price Each	5+
129-4904●	198.33		192.84

Day/night Varifocal Bullet Camera



- High Resolution
- Sony 1/3" Super HAD colour CCD
- Weatherproof anodised aluminium body, IP-65 rated
- 80 piece infra-red LED assembly
- CDS automatic switching as light fades
- Minimum range of 35m at night
- Cable managed bracket
- Includes sunshield
- 12V DC power supply, not supplied

Image Sensor	Sony 1/3" Super HAD CCD	Lens	3.8-9.5mm auto iris varifocal F1.2
Effective Pixels	752 (h) x 582 (v)	Video Output	1V p-p~75Ω
Resolution	480 TVL Colour	Camera dimensions	122.5x110mm
Electronic Shutter	1/50 - 1/100,000 sec.	Bracket dimensions	130mm (l) x 115mm (h)
Sensitivity	0 lux IR LEDs on	Power supply	12V dc
IR LEDs	80 x IR LED assembly, 850nm	Power consumption	1.5A
Signal to noise ratio	Greater than 48dB (AGC off)	Operating temperature	-10°C - 60°C
Backlight compensation	Selectable	Operating humidity	10% ~ 90%
White Balance	Automatic	Weight	1.7kg

450300.450262

Order Code	1+	Price Each	5+
129-4905●	244.46		237.48

Professional True Day/Night Camera



- Sony 1/3" super HAD CCD
- High resolution 480 TVL colour & 520 TVL monochrome
- True day/night, uses a mechanical IR cut filter
- Automatic electronic shutter control
- Selectable gain control
- Selectable back light compensation
- Direct drive (dc) or auto iris (video) lens control
- 12V DC power supply not supplied

Image sensor	Sony 1/3" super HAD CCD	Power consumption	Max.3.6W
Horizontal Resolution	480 TVL colour	Video output	1V p-p~75Ω
	520 TVL monochrome		
Effective Pixels	752 (h) x 582 (v)	Dimensions (LxWxH)	60x50x50mm
Electronic Shutter	1/50 - 1/100,000 secs	Weight	250g
Sensitivity	0.5 lux (colour)	Power supply	12V dc
	0.01 lux(monochrome)@f1.4		
Signal to noise ratio	Greater than 48dB (AGC off)	Operating temperature	-10°C - 50°C
Lens Options	C and CS mount accepted	Operating humidity	10% ~ 90%

Lens not supplied

450302.450267

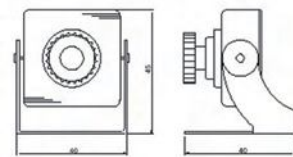
Order Code	1+	Price Each	5+
129-4907●	140.99		134.85

Over 480,000 products online



CCTV Cameras - Colour

Micro CCTV Cameras



The advances in CMOS sensor technology have led to a new range of 'mini' cameras which represent a cost saving over conventional CCD cameras.

- Micro Bodied camera with audio
- 1/3" CMOS Image Sensor
- 50ma Current Consumption
- Low Cost
- Integral Microphone

Applications:

- Security
- Surveillance
- Multimedia

Camera Type	Voltage (V)	Current (mA)	Illum. Min (lux)	SNR	Resolution (Lines)	Sensing Area	Temp. min-max	Dims. W x D (mm)
B/W	12	50	0.2 @ f1.4	46dB	380TVL	1/3"	-10 to 45°C	40x45
Colour	12	50	3 @ f1.4	46dB	380TVL	1/3"	-10 to 45°C	40x45

339243

Description	Order Code	1+	Price Each	10+
Mono CMOS Camera	507-9925	29.85	27.32	25.59
Colour CMOS Camera	507-9937	41.76	38.26	35.81

Colour PCB Camera



- 1/4" Sharp CCD
- Superior image quality
- Low light sensitivity (1Lux)
- Standard 3.7mm lens
- Electronic Auto Iris

Resolution (TVL)	350
Lux Level	1.0 lux
Lens	3.7mm
Voltage/Power	12V dc
Power consumption	100mA
Dimensions (mm)	32 x 32

248591

Lens	Order Code	1+	Price Each	4+
3.7mm	433-0092	69.38		68.88

1/3" Miniature Encased Colour Cameras



- Extremely small metal cased camera
- Full pan and tilt bracket
- Excellent low light sensitivity
- Wide angle or pinhole format
- 12V operation

Resolution (tvl)	380
Min Illumination	4 Lux
Dimensions (LxW)	30x30mm

386890.264770

Description	Order Code	1+	Price Each	4+
Wide Angle (3.7mm)	427-4880	91.37		90.73
Pinhole	427-4891	91.37		90.73

Submersible Bullet Style Camera



- 1/3" Sony Hyper HAD CCD
- IP-68 Waterproof
- Ideal for external use
- incl. PSU, wall bracket & 30mtrs of cable
- Line fed camera
- Electronic auto iris

Resolution (TVL)	420	Power Consumption	2.1w
Lux Level	0.5 lux	Dimensions (L x Dia.)	110 x 32mm
Lens	3.6mm		

248598

Model	Order Code	1+	Price Each	4+
Colour	433-0122	165.99		164.79

Colour Bullet Camera With Varifocal Lens



- High Resolution
- Sony 1/3" Super HAD colour CCD
- Weatherproof anodised aluminium body
- Compact size (36mm diameter)
- 9 -22mm manual varifocal lens
- Automatic gain control
- Includes swivel mounting bracket

Image Sensor	Sony 1/3" Super HAD CCD	Power consumption	Max.2.5W
Effective Pixels	752 (h) x 582 (v)	Video Output	Composite 1V p-p~75Ω
Resolution	480 TVL Colour	Dimensions (DiameterxDepth)mm	36x113mm
Electronic Shutter	1/50 - 1/10,000 sec.	Power supply	12V dc
Sensitivity	0.5 lux @ f2.0	Operating temperature	-10°C ~ 50°C
Signal to noise ratio	Greater than 48dB (AGC off)	Operating humidity	10% ~ 90%
White Balance	Automatic	Weight	290g
Lens	9 - 22mm manual varifocal		

450298.450245

Order Code	1+	Price Each	5+
129-4903●	140.99		134.85

1/3" CCD Colour Cameras



A range of high quality bodied CCD cameras with medium and high resolution models

- 1/3" DSP Panasonic Superview chipsets
- Medium and Hi resolution models
- Dual 12v DC/24v AC or 240v AC
- Direct or Video drive Auto iris capability
- DC level adjustment
- Backlight compensation switchable on/off
- AI connector on side for shorter lens leads
- Low voltage models feature screw type power connections
- Sturdy metal case

Lens not supplied

Order Code	433-0420	433-0432	433-0444	433-0456
Resolution (TVL)	420	420	550	550
Sensor	1/3" Panasonic CCD	1/3" Panasonic CCD	1/3" Panasonic CCD	1/3" Panasonic CCD
Lux Level	0.5 (f1.4)	0.5 (f1.4)	0.5 (f1.4)	0.5 (f1.4)
Shutter Speeds	1/50 to 1/100000s	1/50 to 1/100000s	1/50 to 1/100000s	1/50 to 1/100000s
Lens mount	C or CS mount	C or CS mount	C or CS mount	C or CS mount
Iris	AI/DD	AI/DD	AI/DD	AI/DD
Voltage/Power	12V dc	240V ac	12V dc	240V ac
Dimensions (HxWxD)	134 x 54 x 50	134 x 54 x 50	134 x 54 x 50	134 x 54 x 50

249083

Supply Voltage	Order Code	1+	Price Each	4+
Medium Resolution				
12V dc/24V ac	433-0420	149.28		148.21
240V ac	433-0432	127.64		126.73
High Resolution				
240V ac	433-0456	161.68		160.53
12V dc/24V ac	433-0444	145.52		144.47

Dinon™ Colour Cameras



- 1/3" CCD Professional quality cameras
- Ready to use straight from the box
- Auto detection of lens type
- Lens wizard for easy back focus adjustment
- Automatic black level feature, to enhance images
- Advanced digital signal processing
- Outstandingly easy to use

- Suitable for indoor or outdoor use
- Ideal for professional, commercial or industrial surveillance systems
- Available in standard and high resolution versions
- Nightsense™ enhances the low light sensitivity by a factor of 3 by switching from colour to monochrome, making it ideal for use during the day and also at night. (high resolution camera only)

Lens not supplied

Order Code	430-8189	430-8190	430-8207	430-8219
Resolution (TVL)	330	330	480	480
Sensor	1/3 CCD	1/3 CCD	1/3 CCD	1/3 CCD
Lux Level	0.6	0.6	0.9(0.3 NightSense)	0.9(0.3 NightSense)
Shutter Speeds	1/50 to 1/125000	1/50 to 1/125000	1/50 to 1/125000	1/50 to 1/125000
Lens	CS-Mount	CS-Mount	CS-Mount	CS-Mount
Iris	EI/AI	EI/AI	EI/AI	EI/AI
Voltage/Power	10.8 to 39V dc	85 to 265V ac	10.8 to 39V dc	85 to 265V ac
Connector	BNC	BNC	BNC	BNC
Dimensions (HxWxD)	122 x 66 x 58	122 x 66 x 58	122 x 66 x 58	122 x 66 x 58

248384.383134

Supply Voltage	Order Code	1+	Price Each	3+
Medium Resolution				
230V ac	430-8190	174.25		170.92
High Resolution				
12V dc/24V ac	430-8207	217.82		213.67
230V ac	430-8219	217.82		213.67

High Resolution DNR Colour Camera



- High resolution 530TV lines
- Day/night automatic selection
- On screen display (OSD) menu
- DNR (Digital Noise Reduction) - 4 levels of noise reduction
- Saves up to 70% HDD Storage with DNR, using MPEG format
- Selectable electronic shutter control, FLK/ESC/Manual
- Selectable white balance, ATW/AWC/Manual
- Selectable back light compensation, H/M/L/Off
- Selectable gain control, H/M/L/Off
- Sens-up - maintains luminance levels in low light x128
- Privacy masking - 4 programmable zones
- Mirror function - horizontal image inversion
- Direct drive (dc) or auto iris (video) lens control

Image sensor	Sony 1/3" Super HAD CCD
Horizontal Resolution	530 TVL
Effective Pixels	752 (h) x 582 (v)
Electronic Shutter	Auto/Manual - 1/50 - 1/100,000 seconds
Sensitivity	0.3Lux Colour, 0.1Lux B/W, 0.002Lux Using Sens-Up
Signal to noise ratio	Greater than 50dB (AGC off)
Lens options	C and CS mount accepted (Screw lock)
Power consumption	Max 3.5W
Video output	1V p-p ~ 75Ω (Video 0.714V, Sync 0.286V)
Dimensions (LxWxH)	60x69x69mm
Power supply	12V dc
Operating temperature	-10°C ~ 50°C
Operating humidity	30% ~ 90%
Weight	360g

Lens not supplied

450291.450220

Order Code	1+	Price Each	5+
129-4895●	115.53		110.72

High Resolution DNR Colour Camera



New



CCTV Cameras - Colour - continued

High Resolution DNR Colour Camera - continued

- High resolution 530TV lines
- Day/night automatic selection
- On screen display (OSD) menu
- DNR (Digital Noise Reduction) - 4 levels of noise reduction
- Saves up to 70% HDD Storage with DNR, using MPEG format
- Selectable electronic shutter control, FLK/ESC/Manual
- Selectable white balance, ATW/AWC/Manual
- Selectable back light compensation, H/M/L/Off
- Selectable gain control, H/M/L/Off
- Sens-up - maintains luminance levels in low light x128
- Privacy masking - 4 programmable zones
- Mirror function - horizontal image inversion
- Direct drive (dc) or auto iris (video) lens control

Image sensor Sony 1/3" Super HAD CCD
 Horizontal Resolution 530 TVL
 Effective Pixels 752 (h) x 582 (v)
 Electronic Shutter Auto/Manual - 1/50 - 1/100,000 seconds
 Sensitivity 0.3Lux Colour, 0.1Lux B/W, 0.002Lux Using Sens-Up
 Signal to noise ratio Greater than 50dB (AGC off)
 Lens options C and CS mount accepted (Screw lock)
 Power consumption Max 3.5W
 Video output 1V p-p ~ 75Ω (Video 0.714V, Sync 0.286V)
 Dimensions (LxWxH) 120x62x56mm
 Power supply 12V dc or 24V ac
 Operating temperature -10°C ~ 50°C
 Operating humidity 30% ~ 90%
 Weight 360g

Lens not supplied

450292.450226

Order Code	1+	Price Each	5+
129-4896●	123.84		118.39

CCTV Dome Cameras

High Resolution DNR Vandal Resistant Colour Camera



- High resolution 530TV lines
- Vandal resistant housing
- Three axis camera positioning
- Day/night automatic selection
- On screen display (OSD) menu
- DNR (Digital Noise Reduction) - 4 levels of noise reduction
- Saves up to 70% HDD Storage with DNR, using MPEG format
- Selectable electronic shutter control, FLK/ESC/Manual
- Selectable white balance, ATW/AWC/Manual
- Selectable back light compensation, H/M/L/Off
- Selectable gain control, H/M/L/Off
- Sens-up - maintains luminance levels in low light x128
- Privacy masking - 4 programmable zones
- Mirror function - horizontal image inversion
- IP66 rated

Image sensor Sony 1/3" Super HAD CCD
 Horizontal Resolution 530 TVL
 Effective Pixels 752 (h) x 582 (v)
 Electronic Shutter Auto/Manual - 1/50 - 1/100,000 secs
 Sensitivity 0.3Lux Colour, 0.1Lux B/W, 0.002Lux Using Sens-Up
 Signal to noise ratio Greater than 50dB (AGC off)
 Lens options 3.8-9.5mm DC Auto Iris
 Power consumption Max 3.5W
 Video output 1V p-p~75Ω (Video 0.714V, Sync 0.286V)
 Dimensions (DiameterxH) 145x100mm
 Power supply 12V dc
 Operating temperature -10°C ~ 50°C
 Operating humidity 30% ~ 90%
 Weight 1100g

450293.450227

Order Code	1+	Price Each	5+
129-4897●	171.67		164.30

External Colour/Mono Dome Camera



- High resolution
- Sony 1/3" super HAD CCD
- Surface mount
- External varifocal lens adjustment
- Totally flexible camera positioning
- Automatic gain control
- 24 x IR LEDs
- Weatherproof, IP-65 rated

Image sensor Sony 1/3" interline colour CCD
 Horizontal Resolution 480 TVL
 Effective Pixels 752 (h) x 582 (v)
 Electronic Shutter 1/50 - 1/100,000 secs
 Sensitivity 0.1 Lux @f1.2

Signal to noise ratio Greater than 45dB (AGC off)
 White balance Automatic
 Lens 4-9mm varifocal F1.6
 Video output 1V p-p~75Ω
 Power consumption 140mA, 400mA with IR LEDs on
 Power supply 12V dc
 Operating temperature -10°C ~ 50°C
 Operating humidity 20% ~ 90%
 Dimensions (DiameterxH) 120x96mm

0.1 Lux with IR LEDs on)
 Greater than 45dB (AGC off)
 Automatic
 4-9mm varifocal F1.6
 1V p-p~75Ω
 140mA, 400mA with IR LEDs on
 12V dc
 -10°C ~ 50°C
 20% ~ 90%
 120x96mm

450301.450265

Order Code	1+	Price Each	5+
129-4906●	198.33		192.84

CCTV Accessories

Tecton

Video Isolation Transformer 'Humbug'



- Eliminates humbars, picture tearing, crosstalk and rolling
- Improves existing and new installation
- Produces distortion-free images

Connectors BNC
 Insertion loss 0.5dB
 Weight 150g

H=48, W=50, L=70

212994

Order Code	1+	Price Each	5+	10+
522-6338	75.06	72.66		66.62

Ground Loop Isolator



The Video Ground Loop Isolator is a passive device that can reduce Ground Loop Interference with composite video signals. It is used in situations where video signals are being transmitted between points with different ground potentials. Unbalanced power line loads typically cause differences in ground potentials.

This should be installed where cable runs between/within buildings are fed from different power sources. It must be installed at the camera end of the circuit. All cameras powered from such power sources must be fitted with Ground Loop Isolators to prevent ground loops.

- BNC male to BNC female with 150mm mini coax on both sides
- Passive, no power required
- Prevents video signal distortion caused by video ground loops
- Built in TVS (Transient Voltage Suppressor) for surge protection

Insertion Loss 0.5dB
 Frequency Response 0-3dB at 10MHz
 Input Resistance 75 ohms
 Output Resistance 75 ohms
 Isolation Voltage 600VDC (Min)
 Insulation Resistance 100M Ohms
 Transient Voltage Suppressor 12V rms
 Material ABS Black

450307.450281

Order Code	1+	Price Each	5+
129-4917●	20.89		20.23

Coaxial Distributor & Amplifier



This is a single video input to two video output distributor with amplification.

- 10dB gain
- Red LED - power on/power off
- For connection to video cameras, multiplexers, DVR's etc.
- Power supply (DC 12V) included

All transmission distances mentioned do not take into consideration the connection of image processing equipment (e.g. Quad, Multiplexer, DVR). The transmission range could be considerably reduced dependent upon the type of equipment being used.

Video Input Channel	1	Power Supply	DC12V or AC24V
Video Output Channel	2	Power Consumption	100mA
Video Input Level	0.8 ~ 1.2V p-p, 75Ω	Dimensions (LxWxH)	138x84x28mm
Video Output Level	1V p-p (standard), 75Ω	Weight	130g
Video Bandwidth	10Hz - 10MHz	Material	ABS Black
Transmission Range	300 metres max.		

450308.450283

Order Code	1+	Price Each	5+
129-4918●	27.86		26.12

Coaxial Video Distributors



1294919 is a single video input to four video output distributor. Whilst 1294920 is a four video input to eight video output distributor.

- 1294919 has Dual Power DC12V and AC24V
- Red LED - power on/power off
- For connection to video cameras, multiplexers, DVR's etc.
- Power supply (DC 12V) included

All transmission distances mentioned do not take into consideration the connection of image processing equipment (e.g. Quad, Multiplexer, DVR). The transmission range could be considerably reduced dependent upon the type of equipment being used.

	1294919
Video Input Channel	1
Video Output Channel	4
Video Input Level	0.8 ~ 1.2V p-p, 75Ω
Video Output Level	1V p-p (standard), 75Ω
Video Bandwidth	10Hz - 10MHz
Transmission Range	300 metres max.
Power Supply	DC12V or AC24V
Power Consumption	320mA
Dimensions (LxWxH)	138x84x28mm
Weight	130g
Material	ABS Black

450309.450284

Order Code	1+	Price Each	5+
129-4919●	29.64		28.67

12V Camera Power Supply



Universal switching-mode power supply for 12V dc CCTV cameras.

Input Voltage	100 - 240V ac	Storage Temperature	-10°C to +70°C
Output Voltage	12V dc	Mains Lead Length	2m
Output Current	1A	DC Lead Length	1.8m
Operating Temperature	0°C to +40°C	Dimensions (LxWxH)	74 x 46 x 26mm

403359.403355

Order Code	1+	Price Each	4+
918-6220	10.46		10.19

Dummy Cameras

Internal Dummy Camera



A highly realistic indoor dummy camera, ideal for retail and industrial areas.

- Flashing LED
- Mounting bracket included
- Dimensions (LxWxD) - 140 x 50 x 50mm

245075

Order Code	1+	Price Each	4+
427-5111	15.40		14.31

Full Size Pro-Dummy Camera



- Identical to a fully operational model
- Full size housing
- Helps prevent crime
- Constructed from weatherproof lightweight alloy
- Bracket, wall fixings and cables included
- Easy to install

339320.278096

Order Code	1+	Price Each	5+
509-8890	31.17		29.72

Top Cover Housings



- Pressure die-cast aluminium alloy construction
- Fully cable managed bracket
- Adjustable sliding camera tray
- Sealed cable entry glands
- Additional fixing holes on underside for IR lighting
- Removable top cover for easy access
- IP-68 rated
- 1294924 includes dual 24V ac/12V dc heater
- 1294925 includes mains 230V heater

Ext. Dimensions (LxWxH)	390x127x124mm
Int. Dimensions (LxWxH)	240x90x70mm
Window (WxHxThickness)	82x68x4mm
Finish	Light Ivory Powder Coat & Stove Finished
Cable Inlet	2 x PGA 13.5 (dia. 5 to 8.8mm)
Weight	Housing 1.9Kg, Bracket 0.66Kg

450311.450286

Description	Order Code	1+	Price Each	5+
24Vac/12Vdc	129-4924●	48.77		47.03
240Vac	129-4925●	43.89		42.32

700 products added online every week



See our pick of the hottest products and latest technologies in 'What's New?' at www.farnell.co.uk



Dummy Cameras - continued

CCTV Warning Signs



A self adhesive range of signs for use as either a deterrent or to comply with the current regulations which specify, that anyone recording the public you must indicate to the public that they are being recorded on tape. Red text printed on a white background.

Also available is a large estate agent style sign

Dimensions (HxW): 200x250mm.

5098907: For use inside in a window (HxW: 200x250mm)

5098919: For use outside and is suitable to go on most flat surfaces (HxW: 200x250mm)

5098920: For use outside (HxW: 600x450mm)

339321.264874

Description	Order Code	1+	5+
Internal	509-8907	1.61	1.54
External	509-8919	1.34	1.27
Non-Adhesive Large White	509-8920	5.40	4.81

CCTV Lenses

High Resolution Telecentric & Macro Lenses



High resolution megapixel lenses are used with professional CCD cameras and video equipment. Designed for application like Machine Vision, Image Processing, Identification, Automated Gauging etc. Any application where high resolution images are a must. Telecentric lenses provide low distortion, wide depth of field and suitable use as telephoto or macro. Macro Lenses designed for close up work has wide zoom range for general inspection, documentation and visual aid applications. All lenses are C mount only. Manual Iris.

Focal Length	Angle of view (h) degrees	Application
50mm	10.5	Megapixel Lens
25mm	20.0	Megapixel Lens
8mm	56.3	Megapixel Lens
0.3X-1.0X	11.8-2.78	Megapixel Lens 3.3 Magnification
55mm	9.2	Microscope Lens
0.084-0.84X	18-3.6	Close up Macro Lens

373558.343328

Description	Order Code	1+	5+
50mm	827-6897	108.19	107.42
25mm	827-6900	105.47	104.71
8mm	827-6935	110.30	109.52
0.3X-1.0X	827-6943	280.59	278.60
55mm	827-6960	290.26	288.19
0.084-0.84X	827-6978	208.03	206.55

Camera Housings & Brackets

Camera Mounting Brackets



- Choice of wall or ceiling mount brackets
- Black or white units to suit surrounding decor
- UNC ball joint to assist with installation

772-987/772-999
L=170

Mount	772-987/772-999	772-987/772-999	772-987/772-999	
Wall	Colour	White/Black	Weight	232g
Type	Colour	Order Code	1+	Price Each
Wall	White	772-987	11.22	10.39
Wall	Black	772-999	11.22	10.39

227879

CCTV Complete Housing Kit



A quality CCTV weatherproof housing made of tough, aluminium with a built-in heater.

- Everything you need in one box
- Fits any CCTV cameras up to 280mm long
- Built-in low power heater
- Strong, matching mounting bracket
- IP56 rated
- Dual voltage, 12V dc or 24V ac
- Padlock able, hinged lid for easy installation and adjustment
- Supplied with combination padlock
- Weatherproof cable gland and mounting bolts supplied
- External warning sign and 2x window stickers

Technical Data	Technical Data
Colour Finish	Cream Stove Enamel
Voltage	12V DC/24V AC
Current at 12V DC	200mA
Current at 24V AC	220mA
IP rating	IP56
Dimensions (WxHxL)	140 x 116 x 400 mm
Weight	1.0Kg

339319.274196

Order Code	1+	5+
509-8889	50.05	48.11

Infrared Lighting



10 Metre Infra Red Lamps



IR LED lamps with a range of up to 10 metres with an integrated photocell. Suitable for internal and external use, supplied with bracket.

Description	Voltage
10M IR Lamp	12V dc (450mA)

245219

Description	Order Code	1+	4+
10M IR Lamp	427-5093	63.17	62.72

Monitors



Range Of Metal Cased B/W Monitors



A range of professional monochrome CCTV monitors available in 9", 12" and 15" versions. All monitors are high resolution with up to 1000TVL and the 15" unit has audio as standard. Housed in a stylish metal case the unit is suitable for most applications and is also robust enough for industrial installations. All controls are at the front for easy adjustment.

Resolution	1000 TVL	1000 TVL
Voltage	100-240 VAC	100-240V AC
Video Input Signal	1.0Vp-p (75 Ω)	1.0Vp-p (75 Ω)
Viewing Distance	3-7 feet	3-10 feet
Dimensions (WxDxH)	222x238x250mm	304x320x310mm

373700.343508

Description	Order Code	1+	5+
9" Monitor	827-7060	84.20	81.88
12" Monitor	827-7079	82.89	81.88

Express checkout



With no need to re-enter your details, returning customers can now buy products even faster - **order online today at www.farnell.co.uk**

Monochrome Monitors



- High quality pictures
- Auto termination
- Simple installation and operation
- Standard PAL, BNC input
- Front panel controls
- Voltage supply 100-230v ac, without the need for any switching or adjustment
- Robust metal case to minimize interference

Order Code	430-8300	430-8311
Resolution (TVL)	900	700
Viewable picture area	290mm (13-inch)	415mm (20-inch)
Nominal Power	18 W	27 W
Dimensions (H x W x D)	287 x 305 x 306 mm	386 x 419 x 381 mm
Weight	8.9 kg	15 kg

248539

Model	Order Code	1+	Price Each	3+
Mono. 12-inch	430-8300	172.76		166.72
Mono. 17-inch	430-8311	215.55		208.04

14" Metal Cased Colour Monitor



A 14" professional general purpose colour CCTV monitor with an audio channel as standard. Housed in a stylish metal case the unit is suitable for most application and also robust enough industrial installations. All controls are at the front for easy adjustment.

Resolution	350 TVL
Voltage	230V AC
Video Input Signal	1.0Vp-p (75 Ω) NTSC & PAL compatible
Viewing Distance	4-12 feet
Dimensions (WxDxH)	365x342x391mm

14" Monitor

373701.343511

Description	Order Code	1+	Price Each	5+
14" Monitor	827-7109	241.76		236.92

Colour Monitors



- Attractively styled metal case with front controls and recessed handle
- Audio capabilities with volume control
- Simple installation and operation
- PAL and NTSC formats with composite video
- Sharp stable pictures and an enhanced tube makes these monitors the professionals choice
- Two BNC or 4pin min din Y/C inputs

Order Code	430-8281
Resolution (TVL)	350
Viewable picture area	340mm (13-inch)
Nominal Power	65 W
Dimensions (H x W x D)	330 x 353 x 390 mm
Weight	14 kg

248526

Model	Order Code	1+	Price Each	3+
Colour 14"	430-8281	331.25		322.36

700 products added online every week



See our pick of the hottest products and latest technologies in 'What's New?' at www.farnell.co.uk

LCD Service Monitors



A portable service and installation kit designed for engineers working on their own. The kit provides high quality video and audio in a handy sized case complete with carry straps, connector leads and battery. 2 models are available 4" or 6.8".

- 4" or 6.8" TFT LCD monitors
- 2 x Video Input, 1 x Audio input
- Switchable screen display
- Colour, contrast, brightness and audio adjustment
- Carry bag and belts
- All necessary connectors and leads
- 1Amp Rechargeable Ni-H Battery
- 15V DC Power supply Unit(not to be connected direct to monitor)
- 6.8" LCD - 1152 X 234 / 4" LCD - 480 x 234 pixels
- Audio level 1V/10k

248742

Size	Order Code	1+	Price Each	4+
4" Service Monitor	433-0638	253.59		251.79

TFT LCD Colour Monitors



- 15", 17", or 19" TFT liquid crystal display monitors
- Composite, VGA & S-Video inputs
- Audio input, L & R channel
- Active matrix technology
- Supplied with desk stand and 12V DC PSU

	15"	17"	19"
Active area (mm)	304.1 (H) x 228.1 (V)	337.9 (H) x 270.3 (V)	376.3 (H) x 301 (V)
Resolution	1024 x 768 pixels	1280 x 1024 pixels	1280 x 1024 pixels
Video inputs	BNC(1Vp-p75Ω), VGA, S-Video		
Dimensions (LxWxD)	366x312x45mm	420x375x55mm	430x375x65mm
Weight	3.7kg	5.8kg	5.8kg

450305.450279

Description	Order Code	1+	Price Each	5+
15"	129-4913●	275.21		263.57
17"	129-4914●	342.03		332.52

Video Recorders

Time Lapse Video Recorders



All programming is provided through simple and easy to navigate on screen menus. The unit can be configured to record continuous mode, providing 24 or 960 hour coverage in any system, or it can be switched to alarm/event mode allowing the system to only record when it is in alarm even when the VCR is placed in the standby mode. The units are also fitted with battery back up allowing the unit to store all programming, even during the event of a power failure. The menu display will also provide the last four such power failures with the power off time and power on time.

- 24 or 960 hours recording on E180 VHS cassette
- Series recording
- Alarm search facility
- Forward & reverse playback
- Timer recording
- Easy to use on screen menus
- Reliable continuous recording
- Alarm event recording even in standby
- Key lock facility
- Jog/shuttle playback control
- Size 360 x 94 x 270 (H x W x D)



Video Recorders - continued

Time Lapse Video Recorders - continued

373703.310924

Description	Order Code	1+	Price Each	5+
960 Hr	827-7133	229.88		228.24

Video Management

CCTV Warning Signs



A self adhesive range of signs for use as either a deterrent or to comply with the current regulations which specify, that anyone recording the public you must indicate to the public that they are being recorded on tape. Red text printed on a white background.

Also available is a large estate agent style sign

Dimensions (HxW): 200x250mm.

5098907: For use inside in a window (HxW: 200x250mm)

5098919: For use outside and is suitable to go on most flat surfaces (HxW: 200x250mm)

5098920: For use outside (HxW: 600x450mm)

339321.264874

Description	Order Code	1+	Price Each	5+
Internal	509-8907	1.61		1.54
External	509-8919	1.34		1.27
Non-Adhesive Large White	509-8920	5.40		4.81

Video Motion & External Detection

Autoswitch



The autoswitch has been designed to give the installer a custom-made detector for signalling. It enables interconnection with CCTV, radio pagers and alarm panels.

The autoswitch offers adjustable timer output up to 5 minutes after the last activation of the sensor and selectable walk test LED.

- 12V dc operation
- Various detection patterns ranging from 18 metres to 40 metres
- Selectable 1-4 pulse count option
- Voltage-free changeover contacts and transistor output with variable timer
- IP55 robust and weatherproof enclosure

Operating voltage	12V dc
Current consumption	50 mA
Optics	Dual element, thermally stabilised sensor with U/V protection, fresnel high density optics
Outputs	1A @ 12V dc changeover relay, transistor 80 mA
Pulse count	1-4 sec selectable
Alarm timer	0-5 min. adjustable
Enclosure	IP55

227815

Order Code	1+	Price Each	3+
354-3328	57.42		56.31

Help us to help the environment



This catalogue has been printed on paper certified from a sustainable source.

Please recycle after use.