



Contents

Page

90° Rotational Handle Locks	791
Anti-Vibration Mounts	785
Brushes	787
Chain Accessories	789
Clamping Elements	789
Collet Knob Accessories	782
Collet Knobs	781
Electric Locking	790
Gas Springs	788
Handles	783
Hinges	788
Knobs (Spindle Fitting)	780
Mounting Feet	785
Padlocks	791
Pointer Knobs	780
Push-On Knobs	780
Quarter - Turn Lock Kits	791
Sealing Strip	788
Slider Knobs	780
Toggle Latches	790
Wire Rope	789



Make Farnell-Newark InOne
your first choice -
search over 300,000 products at
www.farnell-newarkinone.com.sg

**Can't find the product
you are looking for?**

22

Knobs, Handles, Latches & Hardware



Slider Knobs

Low Profile



- Low profile
- Ergonomically designed
- For use with slider potentiometers
- Available in 4 colours and two shaft styles



Shaft Type	Shaft Length	Colour	Width	Length	Height	Mftrs. List No.	Order Code
T' Fit	18.5	Red/White	11	24	10	P775-AF	892-117
T' Fit	18.5	Black/White	11	24	10	P775-OF	892-129
T' Fit	18.5	Grey/White	11	24	10	P775-GF	892-130
T' Fit	18.5	White/Black	11	24	10	P775-FO	892-142
Tapered	4	Red/White	11	24	10	P774-AF	892-154
Tapered	4	Black/White	11	24	10	P774-OF	892-166
Tapered	4	Grey/White	11	24	10	P774-GF	892-178
Tapered	4	White/Black	11	24	10	P774-FO	892-180
Tapered	8	Red/White	15	24	9.6	P778-AF	892-191
Tapered	8	Black/White	15	24	9.6	P778-OF	150-484
Tapered	8	Grey/Black	15	24	9.6	P778-GO	150-485
Tapered	8	White/Black	15	24	9.6	P778-FO	892-208

213965

Order Multiple=5	Price Each			
Order Code	5+	50+	100+	500+
All Order Codes	0.81	0.66	0.48	0.43

Push-On Knobs

6mm-D Shaft

Soft Touch



- Manufactured from rubber with a plastic insert
- Soft textured finish
- Coloured pointer
- Available in 6 colours

Knob dia. 13.2mm
Shaft dia. 6mm
Height 16mm

214096

Body/Pointer Colour	Order Code	10+	50+	100+	250+
Grey/Red	766-653	0.59	0.53	0.50	0.47
Grey/Blue	766-665	0.59	0.53	0.50	0.47
Grey/Green	766-677	0.59	0.53	0.50	0.47
Grey/Grey	766-689	0.59	0.53	0.50	0.47
Grey/Black	766-690	0.59	0.53	0.50	0.47
Black/White	766-707	0.59	0.53	0.50	0.47

1/4" Moulded Plastic

(Grub Screw/Push On)



- Matt black knobs with integral skirt to cover potentiometer or switch fixing nuts
- Fits standard 1/4" diameter shaft
- Interference push-fit or grub screw fixing
- Choice of coloured push-fit caps with white line

H = 19
Dia. = 19.5 (base)

214135

Knobs	Order Code	5+	25+	100+	250+	+
Push fit knob	146-356	0.66	0.58	0.54	0.43	--
Grub screw fixing knob	146-357	1.37	1.26	1.20	1.06	--
Caps						
Black	146-358	0.54	0.51	0.48	0.47	--
Red	146-359	0.54	0.51	0.48	0.47	--
Yellow	146-360	0.54	0.51	0.48	0.47	--
Green	146-361	0.54	0.51	0.48	0.47	--
Blue	146-362	0.54	0.51	0.48	0.47	--
Grey	146-363	0.54	0.51	0.48	0.47	--

Pointer Knobs



H = 13.5 L = 31.5

214174

- Moulded pointer knob
- White indicator line
- Grub screw fixing
- Suitable for 6.4mm (0.23in) dia spindles



Order Code	5+	25+	50+	100+
766-720	1.05	0.96	0.84	0.75

1/4" Plastic Matt Finish

(Grub Screw)



- Moulded in Nylon with nickel plated brass insert
- Meets UL94V-2
- Steel slotted head grub screw

Knob Dia.	Height	Mftrs. List No.	Order Code
14	16.5	KX0606	120-9725
21	20.3	KX0607	120-9726
28.1	24.1	KX0608	120-9727

213878

Knob Dia.	Order Code	1+	50+	100+
14	120-9725	3.32	3.03	2.60
21	120-9726	3.58	3.42	2.57
28.1	120-9727	4.00	3.74	3.06

Knobs (Spindle Fitting)

1/4" Plastic, K Series

(Grub Screw)



A range of control knobs, moulded in a scratch resistant plastic, fitted with grub screw.

Knob Dia.	Skirt Dia.	Height	Colour	Mftrs. List No.	Order Code
Style K					
14	—	15.2	Black	R11100900	143-281
21.1	—	15.2	Black	R11200900	143-288
29.5	—	20.3	Black	R11300900	143-296
Style KSL					
14	—	10.8	Black	R11140900	143-286
21.1	—	10.8	Black	R11240900	143-294
29.5	—	13.3	Black	R11340900	143-302
Style KS					
14	19.1	15.2	Black	R11120900	143-283
21.1	28.2	15.2	Black	R11220900	143-290
29.5	41.9	20.3	Black	R11320900	143-298
Style KWS					
21.1	28.2	15.2	Black	R11230900	143-292
29.5	41.9	20.3	Black	R11330900	143-300

214137

Knob Dia.	Order Code	1+	50+	100+	250+	+
Style K						
14	143-281	3.42	3.12	2.91	2.52	--
21.1	143-288	3.87	3.48	3.24	2.82	--
29.5	143-296	5.37	4.80	4.47	3.93	--
Style KSL						
14	143-286	3.30	2.91	2.82	2.46	--
21.1	143-294	3.72	3.36	3.15	2.79	--
29.5	143-302	5.16	4.56	4.32	3.81	--
Style KS						
14	143-283	4.20	3.78	3.51	2.70	--

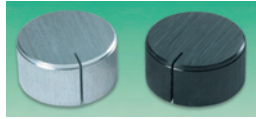


Knob Dia.	Order Code	Price Each				
		1+	50+	100+	250+	+
21.1	143-290	4.35	3.90	3.66	3.21	--
29.5	143-298	5.04	4.56	4.23	3.72	--
Style KWS						
21.1	143-292	5.55	5.22	4.65	3.45	--
29.5	143-300	6.30	5.91	5.22	3.51	--

1/4" Solid Aluminium Brushed Finish



(Grub Screw)



- Solid aluminium control knobs
 - Natural or matt black anodised brushed finish
 - Indented line indicator
 - Grub screw fixing
- H = 14

MC16H-2D-A = 662-320 MC22H-2D-A = 662-331 MC28H-2D-A = 662-343 MC16H-2D-B = 662-355
MC22H-2D-B = 662-367 MC28H-2D-B = 662-379

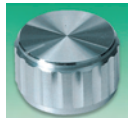
213916

Knob Dia.	Order Code	Price Each			
		1+	50+	100+	250+
Natural					
16	662-320	5.07	4.68	4.26	3.81
22	662-331	3.69	3.39	3.12	2.76
28	662-343	5.07	4.68	4.26	3.81
Black					
16	662-355	3.24	3.03	2.79	2.19
22	662-367	3.69	3.42	3.12	2.76
28	662-379	5.07	4.71	4.29	3.87

1/4" Fluted Solid Aluminium



(Grub Screw)



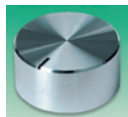
- Fluted solid aluminium control knob
 - Indented line indicator
 - Grub screw fixing
- H = 154

MC15T-2D = 662-380 MC20T-2D = 662-392 MC25T-2T = 662-409 MC30T-2D = 662-410

213917

Knob Dia.	Order Code	Price Each			
		1+	50+	100+	250+
15	662-380	3.75	3.39	3.15	2.79
20	662-392	4.02	3.66	3.39	3.00
25	662-409	4.68	4.20	3.99	3.51
30	662-410	5.20	4.74	4.38	3.93

Aluminium Clad Finish



- Spin finish
- 4mm or 1/4" spindle diameters
- Black line indicator
- Grub screw fixing

MC18S-4D = 662-422 MC22S-4D = 662-434 MC14S-2D = 662-446 MC18S-2D = 662-458
MC22S-2D = 662-460 MC29S-2D = 662-471 MC32S-2D = 662-483 MC38S-2D = 662-495

213918

Knob Dia.	Spindle Dia.	Height	Order Code	Price Each			
				1+	50+	100+	250+
18	4mm	12	662-422	4.50	4.17	3.99	3.66
22	4mm	13	662-434	4.92	4.53	4.38	4.08
14	6.35mm	16	662-446	4.08	3.78	3.39	3.06
18	6.35mm	12	662-458	4.50	4.17	3.87	3.48
22	6.35mm	13	662-460	4.86	4.74	4.56	4.29
29	6.35mm	14	662-471	5.25	4.98	4.83	4.47
32	6.35mm	14	662-483	6.27	6.12	5.97	5.58
38	6.35mm	16	662-495	7.23	6.87	6.57	6.21

1/4" Fine Fluted Solid Aluminium



(Grub Screw)



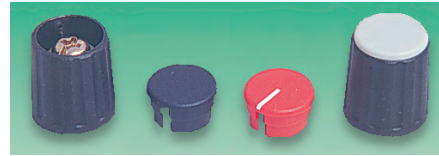
- Solid aluminium control knobs
 - Available in natural or matt black anodised finish
 - Top view indented live indicator
 - Fine fluted sides
 - Fitted with grub screws
- H = 15.5

214176

Knob Dia.	Order Code	Price Each			
		1+	5+	10+	50+
Natural					
19	890-923	3.57	3.21	3.03	2.85
23.8	890-935	3.90	3.48	3.30	3.09
31.8	890-947	4.71	4.23	3.99	3.63
Black					
19	890-959	3.48	3.15	2.97	2.82
23.8	890-960	3.90	3.48	3.30	3.09
31.8	890-972	4.71	4.23	3.99	3.78

Collet Knobs

Matt finish, 1/4"



Knob Plain cap Lined cap Knob fitted with cap

- Matt black nylon control knobs
- Brass collet is simply tightened using a screwdriver
- Coloured caps available plain or with line

Operating temperature -20°C to +70°C

15mm Diameter	Colour	Height	Mfrs. List No.	Order Code
Knob	Black	16.3	KX26/15/61/3	151-046
Plain cap	Black	1.2	KX30/15/10/3	151-047
	Red	1.2	KX30/15/10/4	151-048
Lined Cap	Black	1.2	KX30/15/11/3	151-051
	Red	1.2	KX30/15/11/4	151-052

	Order Code	Price Each			
		1+	50+	100+	250+
Knob					
	151-046	2.07	1.95	1.32	1.28
Plain Cap					
	151-047	0.16	0.13	0.09	0.09
	151-048	0.16	0.13	0.09	0.09
Lined Cap					
	151-051	0.53	0.50	0.37	0.33
	151-052	0.53	0.50	0.37	0.33

21mm Diameter	Colour	Height	Mfrs. List No.	Order Code
Knob	Black	17.5	KX26/21/61/3	151-055
Plain cap	Black	1.5	KX30/21/10/3	151-056
	Red	1.5	KX30/21/10/4	151-057
Line cap	Black	1.5	KX30/21/11/3	151-060
	Red	1.5	KX30/21/11/4	151-061

	Order Code	Price Each			
		1+	50+	100+	250+
Knob					
	151-055	2.49	2.31	1.65	1.56
Plain Cap					
	151-056	0.22	0.19	0.15	0.12
	151-057	0.22	0.19	0.15	0.12
Lined Cap					
	151-060	0.56	0.53	0.40	0.36
	151-061	0.56	0.53	0.40	0.36

28mm Diameter	Colour	Height	Mfrs. List No.	Order Code
Knob	Black	18.3	KX26/28/61/3	151-064
Plain cap	Black	1.5	KX30/28/10/3	151-065
Lined cap	Black	1.5	KX30/28/11/3	151-069
	Red	1.5	KX30/28/11/4	151-070

214164

	Order Code	Price Each			
		1+	50+	100+	250+
Knob					
	151-064	2.85	2.64	1.92	1.81
Plain Cap					
	151-065	0.16	0.13	0.09	0.09
Lined Cap					
	151-069	0.60	0.57	0.42	0.39
	151-070	0.60	0.57	0.42	0.39

Plain Circular - 70 Series



- Gloss finish

Knob Dia.	Spindle Dia.	Colour	Mfrs. List No.	Type	Order Code
9mm	0.125" / 3mm	Black	020-1220	70-9-1/2-Black	120-9746
		Black	020-1120	70-9-3-Black	120-9748



10mm	0.125"	Black	020-2220	70-10-1/8-Black	120-9749
	3mm	Black	020-2120	70-10-3-Black	120-9751
	4mm	Black	020-2320	70-10-4-Black	120-9752
14.5mm	0.125"	Black	020-3220	70-14-1/8-Black	120-9753
	0.25"	Black	020-3520	70-14-1/4-Black	120-9754
	0.25"	Grey	020-3510	70-14-1/4-Grey	120-9755
	3mm	Black	020-3120	70-14-3-Black	120-9756
	4mm	Black	020-3320	70-14-4-Black	120-9757
	6mm	Black	020-3420	70-14-6-Black	120-9758
21mm	0.25"	Black	020-4520	70-21-1/4-Black	120-9761
	0.25"	Grey	020-4510	70-21-1/4-Grey	120-9762
	4mm	Black	020-4320	70-21-4-Black	120-9763
	6mm	Black	020-4420	70-21-6-Black*	120-9764
	6mm	Grey	020-4410	70-21-6-Grey*	120-9765
	28mm	0.25"	Black	020-5520	70-28-1/4-Black*
0.25"		Grey	020-5510	70-28-1/4-Grey*	120-9768
6mm		Black	020-5420	70-28-6-Black*	120-9769
36mm		0.25"	Black	020-6520	70-36-1/4-Black*
	6mm	Black	020-6420	70-36-6-Black*	120-9771

*Collet is tightened by Hexagon Nut

214141

Winged Knob/Lined - 73 Series



● Gloss finish

Knob Dia.	Spindle Dia.	Colour	Mftrs. List No.	Type	Order Code
14.5mm	0.25"	Black	023-3520	73-14-1/4-Black	120-9773
	4mm	Black	023-3320	73-14-4-Black	120-9774
	6mm	Black	023-3420	73-14-6-Black	120-9775
21mm	0.25"	Black	023-4520	73-21-1/4-Black	120-9776
	0.25"	Grey	023-4510	71-21-1/4-Grey	120-9777
	6mm	Black	023-4420	71-21-6-Black*	120-9778
28mm	0.25"	Black	023-5520	71-28-1/4-Black*	120-9779

*Collet is tightened by Hexagon Nut

214144

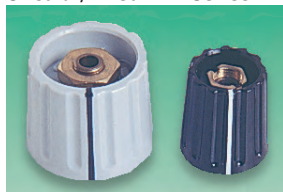


22

Knobs, Handles, Latches & Hardware

Knob Dia.	Spindle Dia.	Order Code	Price Each			
			1+	50+	100+	250+
9mm	0.125"	120-9746	5.99	3.84	3.52	2.90
	3mm	120-9748	5.99	3.84	3.52	2.90
10mm	0.125"	120-9749	4.62	3.03	2.77	2.28
	3mm	120-9751	4.62	3.03	2.77	2.28
	4mm	120-9752	4.62	3.03	2.77	2.28
14.5mm	0.125"	120-9753	5.27	3.45	3.16	2.57
	0.25"	120-9754	3.74	3.58	3.42	3.06
	0.25"	120-9755	5.27	3.45	3.16	2.57
	3mm	120-9756	3.81	3.52	3.42	2.93
	4mm	120-9757	5.27	3.45	3.16	2.57
	6mm	120-9758	3.94	3.68	3.55	3.06
21mm	0.25"	120-9761	4.88	4.59	4.36	3.84
	0.25"	120-9762	6.25	4.07	3.68	3.06
	4mm	120-9763	6.25	4.07	3.68	3.06
	6mm	120-9764	3.97	3.91	3.81	3.32
	6mm	120-9765	6.25	4.07	3.68	3.06
	28mm	0.25"	120-9767	8.59	5.60	5.05
0.25"		120-9768	8.59	5.60	5.05	4.23
6mm		120-9769	8.59	5.60	5.05	4.23
36mm	0.25"	120-9770	11.13	7.29	6.58	5.47
	6mm	120-9771	9.63	6.28	5.63	4.69

Circular/Lined - 71 Series



● Gloss finish



Knob Dia.	Spindle Dia.	Colour	Mftrs. List No.	Type	Order Code
9mm	0.125"	Black	021-1220	71-9-1/8-Black	120-9780
10mm	0.125"	Black	021-2220	71-10-1/8-Black	120-9781
	4mm	Black	021-2320	71-10-4-Black	120-9782
14.5mm	0.125"	Black	021-3220	71-14-1/8-Black	120-9783
	0.25"	Black	021-3520	71-14-1/4-Black	120-9785
	4mm	Black	021-3320	71-14-4-Black	120-9786
	6mm	Black	021-3420	71-14-6-Black	120-9787
21mm	0.25"	Black	021-4520	71-21-1/4-Black	120-9788
	0.25"	Grey	021-4510	71-21-1/4-Grey	120-9789
	6mm	Black	021-4420	71-21-6-Black*	120-9790
28mm	0.25"	Black	021-5520	71-28-1/4-Black*	120-9791
	6mm	Black	021-5420	71-28-6-Black*	120-9792

*Collet is tightened by Hexagon Nut

214142

Knob Dia.	Spindle Dia.	Order Code	Price Each			
			1+	50+	100+	250+
9mm	0.125"	120-9780	7.16	4.65	4.17	3.48
	0.125"	120-9781	5.89	3.81	3.45	2.83
10mm	4mm	120-9782	5.89	3.81	3.45	2.83
	0.125"	120-9783	6.02	3.87	3.55	2.93
14.5mm	0.25"	120-9785	5.76	3.68	3.42	2.93
	4mm	120-9786	6.02	3.87	3.55	2.93
	6mm	120-9787	5.76	3.68	3.42	2.93
	0.25"	120-9788	6.87	4.56	4.04	3.39
21mm	0.25"	120-9789	6.87	4.56	4.04	3.39
	6mm	120-9790	6.87	4.56	4.04	3.39
	0.25"	120-9791	9.28	6.12	5.37	4.56
28mm	6mm	120-9792	8.50	5.57	4.98	3.91

Collet Knob Accessories

Coloured Caps - 1450 Series



Coloured push fit caps to suit 70, 71, 72, 73, series knobs.

Knob Dia.	Colour	Mftrs. List No.	Type	Order Code
9mm-10mm	Black	040-1020	1450-9-Black	120-9799
	Grey	040-1010	1450-9-Grey	120-9800
	Red	040-1030	1450-9-Red	120-9801
	Blue	040-1040	1450-9-Blue	120-9803
14.5mm	Black	040-3020	1450-14-Black	120-9805
	Grey	040-3010	1450-14-Grey	120-9807
	Red	040-3030	1450-14-Red	120-9808
	Blue	040-3040	1450-14-Blue	120-9809
	Yellow	040-3050	1450-14-Yellow	120-9810
	Green	040-3060	1450-14-Green	120-9811
21mm	Black	040-4020	1450-21-Black	120-9812
	Grey	040-4010	1450-21-Grey	120-9813
	Red	040-4030	1450-21-Red	120-9815
	Green	040-4060	1450-21-Green	120-9816
28mm	Black	040-5020	1450-28-Black	120-9817
	Grey	040-5010	1450-28-Grey	120-9818
	Red	040-5030	1450-28-Red	120-9819
36mm	Black	040-6020	1450-36-Black	120-9820
	Grey	040-6010	1450-36-Grey	120-9821
	Red	040-6030	1450-36-Red	120-9823

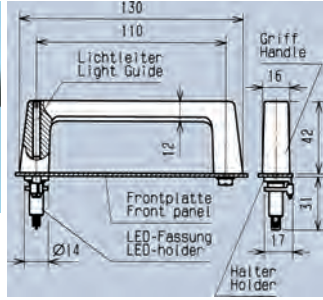
214146

Suitable for Knob Dia.	Colour	Order Code	Price Each			
			5+	50+	100+	250+
9mm-10mm	Black	120-9799	0.72	0.48	0.43	0.35
	Grey	120-9800	0.72	0.48	0.43	0.35
	Red	120-9801	0.72	0.48	0.43	0.35
	Blue	120-9803	0.72	0.48	0.43	0.35
14.5mm	Black	120-9805	0.68	0.45	0.40	0.34
	Grey	120-9807	0.68	0.45	0.40	0.34
	Red	120-9808	0.68	0.45	0.40	0.34
	Blue	120-9809	0.68	0.45	0.40	0.34
	Yellow	120-9810	0.68	0.46	0.39	0.33
	Green	120-9811	0.68	0.45	0.40	0.34
21mm	Black	120-9812	0.78	0.52	0.46	0.38
	Grey	120-9813	0.78	0.52	0.46	0.38
	Red	120-9815	0.78	0.52	0.46	0.38
	Green	120-9816	0.68	0.45	0.40	0.34
28mm	Black	120-9817	0.98	0.64	0.58	0.48
	Grey	120-9818	0.98	0.64	0.58	0.48
	Red	120-9819	0.98	0.64	0.58	0.48
36mm	Black	120-9820	1.24	0.78	0.72	0.61
	Grey	120-9821	1.24	0.78	0.72	0.61
	Red	120-9823	1.24	0.78	0.72	0.61

Prices are in Singapore Dollars and exclusive of GST. Due to the volatile nature of certain products, prices are subject to change without notice.

Handles

Illuminated Handles



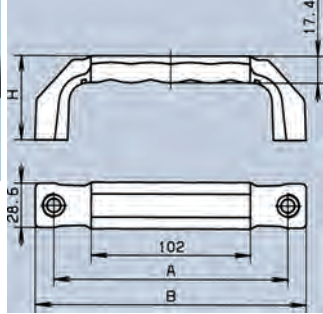
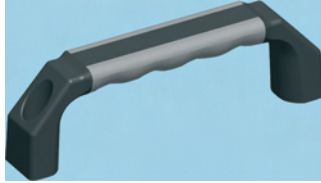
- Handle fitted with light guide and super-red/green duo LED
- Handle material:- Duraplasic FS31 Black
- Threaded insert:- Steel
- Light Guide material:- PC UL94 clear
- Terminals:- CuZn tinned
- Carrying capacity:- 500N
- Supplied unassembled c/w screws and washers

NEW

Order Code	Mfrs. List No.
100-4245	3267.1353

Mfrs. List No.	Order Code	1+	10+	20+	40+
3267.1353	100-4245	23.40	22.04	20.73	19.76

Plastic U-Shaped handles



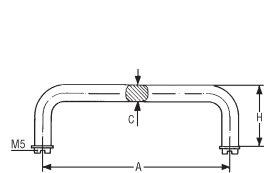
- New bi-material plastic handle
- PA 6 Reinforced fiberglass (black) for strength
- TPE (grey) soft-feel, non-slip grip for comfort
- Carrying capacity:- 750N
- Supplied c/w screws and washers

NEW

Order Code	Mfrs. List No.	A	B	H
100-4247	3316.1541	150	173	55

Mfrs. List No.	Order Code	1+	10+	20+	40+
3316.1541	100-4247	39.68	37.14	34.47	33.43

Aluminium Flat Rounded Handles



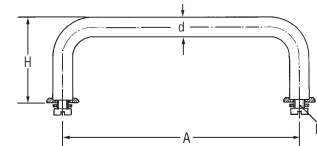
- Flat style instrument handles
- Supplied with M5 fixing screws and washers
- Carrying capacity approx. 75Kg
- Traditional natural anodised finish or newly introduced colours of black and off-white (RAL 9002)

Order Code	Mfrs. List No.	A	B	C	E	H	Weight
861-194	277.1	55	8	29		25g	
861-200	277.2	88	8	29		35g	
861-212	277.6	100	8	39		45g	
861-224	277.3	120	10	39		75g	
861-236	277.4	180	10	39		100g	
861-248	277.5	235	10	39		125g	
421-6260	3277.0553	55	8	55		25g	
421-6271	3277.0883	88	8	96		35g	
421-6313	3277.1003	100	8	108		45g	
421-6283	3277.1203	120	10	130		75g	
421-6295	3277.1803	180	10	190		100g	

421-6301	3277.2353	235	10	245	125g
421-6325	3277.0556	55	8	63	25g
421-6337	3277.0886	88	8	96	35g
421-6349	3277.1006	100	8	108	45g
421-6350	3277.1206	120	10	130	75g
421-6362	3277.1806	180	10	190	100g
421-6374	3277.2356	235	10	245	125g

Order Multiple=2	Order Colour	Fixing centres	Order Code	2+	10+	20+	40+
Natural		55	861-194	8.90	8.01	7.56	7.44
		88	861-200	10.10	9.09	8.58	8.46
		100	861-212	11.51	10.35	9.75	9.35
		120	861-224	11.90	10.71	10.14	9.67
		180	861-236	14.01	12.60	11.91	11.72
Black		235	861-248	16.28	14.64	13.83	13.62
		55	421-6260	10.62	9.39	8.85	8.51
		88	421-6271	12.96	11.46	10.77	10.37
		100	421-6313	14.58	12.84	12.09	11.63
		120	421-6283	15.03	13.32	12.54	12.04
		180	421-6295	18.93	16.74	15.75	15.16
		235	421-6301	21.57	19.11	17.97	17.25
Off-White		55	421-6325	10.89	9.60	9.03	8.70
		88	421-6337	13.32	11.76	11.07	10.65
		100	421-6349	15.00	13.26	12.48	12.00
		120	421-6350	15.42	13.62	12.81	12.32
		180	421-6362	19.44	17.16	16.17	15.53
		235	421-6374	22.17	19.65	18.48	17.76

Steel Rounded Handles



- Supplied with chrome-plated washers to ensure a flush seating of the handle even with large mounting holes
- Suitable for pull-push a lifting actions for a wide variety at applications
- New colours of black and off-white (RAL 9002) have been introduced
- Supplied complete with fixing hardware

Order Code	Mfrs. List No.	A	H	d	Screw Size
Chrome					
305-8505	270.8	30	19	6	M3
305-8517	270.9	35	19	6	M3
305-8529	270.10	45	30	7	M4
861-273	270.1	55	29	7	M4
861-285	270.2	88	33	8	M4
305-8554	3280.1201	88	50	11	M5
861-297	270.6	100	43	10	M5
861-303	270.3	120	43	10	M5
305-8566	3280.1301	120	50	11	M5
861-315	270.4	180	43	10	M5
305-8530	270.7	200	43	10	M5
305-8542	270.5	235	43	10	M5
Black					
421-6386	3270.0553	55	30	7	M4
421-6398	3270.0883	88	33	8	M4
421-6404	3270.1003	100	43	10	M5
861-327	3280.1603	100	50	11	M5
421-6416	3270.1213	120	43	10	M5
861-339	3280.1303	120	50	11	M5
421-6428	3270.1803	180	43	10	M5
421-6430	3270.2003	200	43	10	M5
421-6441	3270.2353	235	43	10	M5
Off-White					
421-6453	3270.0556	55	29	7	M4
421-6465	3270.0886	88	32	8	M4
421-6477	3270.1006	100	42	10	M5
421-6489	3270.1206	120	42	10	M5
421-6490	3270.1806	180	42	10	M5
421-6507	3270.2006	200	42	10	M5
421-6519	3270.2356	235	42	10	M5

Finish	Fixing Centres	Order Code	2+	10+	20+	40+
Chrome	30	305-8505	10.56	9.48	8.97	8.46
	35	305-8517	13.31	11.97	11.28	10.65
	45	305-8529	12.39	11.13	10.53	9.50
	88	861-285	9.12	8.22	7.74	7.32
	88	305-8554	13.92	12.51	11.82	11.13
	100	861-297	9.52	8.55	8.07	7.59
	120	861-303	10.19	9.15	8.67	8.16
	120	305-8566	15.54	13.98	13.20	12.42
	180	861-315	11.87	10.68	10.08	9.48
	200	305-8530	13.83	12.42	11.76	11.04
Black	235	305-8542	14.84	13.35	12.60	11.88
	55	421-6386	12.90	11.91	11.31	10.59
	88	421-6398	9.30	8.58	8.13	7.65
	100	421-6404	10.62	9.81	9.33	8.73
	100	861-327	11.35	10.23	9.63	9.09

22

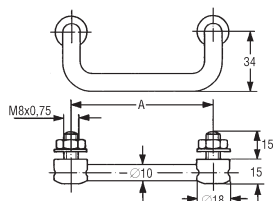
Knobs, Handles, Latches & Hardware

Compliant
Non-compliant
RoHS
+ Limited stock - RoHS replacement available



Finish	Fixing Centres	Order Code	Price Each			
			2+	10+	20+	40+
Chrome/Plastic Coated	120	421-6416	12.90	11.91	11.31	10.59
	120	861-339	12.06	10.83	10.23	9.63
	180	421-6428	13.29	12.27	11.67	10.92
	200	421-6430	14.43	13.32	12.63	11.85
	235	421-6441	15.00	13.83	13.17	12.33
	235	421-6453	12.90	11.91	11.31	10.59
Off-White	55	421-6453	9.30	8.58	8.13	7.65
	88	421-6465	10.62	9.81	9.33	8.76
	100	421-6477	12.90	11.91	11.31	10.59
	120	421-6489	13.29	12.27	11.67	10.92
	180	421-6490	14.43	13.32	12.63	11.85
	200	421-6507	15.00	13.32	12.63	11.85

Folding
Chrome/Plastic Coated



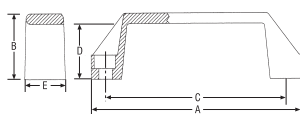
MENTOR

- Manufactured from high gloss, chrome plated steel
- Plastic coated option
- Foldable inwards
- Spring lock mechanism to hold in position
- 50kg per pair carrying capacity
- Supplied with M8 nuts and washers

213970

Fixing Centres (A)	Mftrs. List No.	Order Code	Price Each			
			2+	10+	20+	40+
Plain						
100	286.6	861-250	23.13	20.82	20.27	--
120	286.3	861-261	23.53	21.18	19.98	19.67
Plastic Coated						
100	3286.1003	305-4214	25.86	23.25	21.96	21.76
120	3286.1203	305-4226	26.78	24.12	22.74	22.23

Bridge



RENKOL

- Modern design
- High impact resistance

A	B	C	D	E	Thread/Bore
134	41	117	34.5	26	8.5

211834

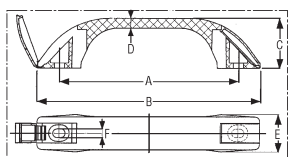
Mftrs. List No.	Order Code	Price Each					
		1+	10+	20+	50+	+	+
T1480	700-7371	2.62	2.34	2.10	1.77	--	--

Plastic



MENTOR

- Black polyethylene carrying handle
- Integral screw covers to provide flush finish
- Not supplied with fixing screws



A	B	C	D	E	F	Screw Size	Mftrs. List No.	Order Code
66.5	83.2	18.7	3.7	13.7	3.2	M3	3044.0665	861-340
89.9	112.5	25.2	5	18.6	3.2	M3	3044.0899	861-352
112	140	31.5	6.3	23.2	4.2	M4	3044.1120	861-364
138	174	38.7	7.7	29	5.2	M5	3044.1380	861-376

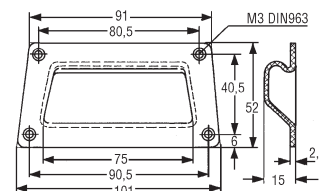
213968

Order Multiple=2	Fixing Centres	Order Code	Price Each			
			2+	10+	20+	40+
	66.5	861-340	4.28	3.87	3.63	3.42
	89.9	861-352	5.45	4.89	4.62	4.35
	112	861-364	6.12	5.52	5.19	4.89
	138	861-376	9.79	8.82	8.31	7.83

Tray
Screw Fit



Shallow Finger



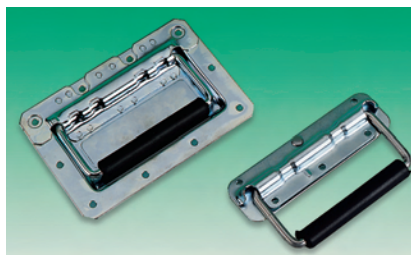
MENTOR

- High quality ABS tray handle
- Pre-drilled countersunk holes
- Fixing with M3 screws (not supplied)
- Available in 2 colours
- Shallow finger or Deep grip

213969

Colour	Mftrs. List No.	Order Code	Price Each			
			1+	10+	20+	40+
Shallow						
Grey	269.1	861-390	4.77	4.29	4.05	3.78
Black	3269.1003	861-406	4.77	4.29	4.05	3.78
Deep Grip						
Black	3246.2003	305-7112	8.57	7.71	7.29	6.84

Spring Loaded



Recessed Handle
Cut Out 128 x 75mm
Overall 160 x 108mm

Drop Handle
Fixing Plate 140 x 40mm
Overall 140 x 85mm

- Bright plated steel fixing plate
- Spring loaded drop handle
- Black plastic hand grip

213962

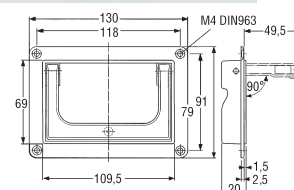
	Order Code	Price Each			
		1+	10+	20+	40+
Recessed Handle	861-467	9.12	8.19	7.74	7.29
Drop Handle	861-479	8.08	7.26	6.84	6.84

Folding



MENTOR

- Folding panel handles
- Choice of polyamide or aluminium handles
- Spring loaded - choice of locking or spring - back versions
- Can be fitted from the front or from behind the panel
- Supplied without fixing hardware



22

Knobs, Handles, Latches & Hardware



Tray	Handle Grip	Carrying Capacity per pair (Kg)
861-418 Aluminium black powder coated	Aluminium silver powder coated - locking	50
421-6052 Aluminium black powder coated	Aluminium silver powder coated - Spring locking	50
861-420 Black Polyamide	Black polyamide - locking	125
421-6090 Black Polyamide	Black polyamide - Spring back	125

213961

Finish	Mfrs. List No.	Order Code	2+	10+	20+	40+
Steel	263.1	861-418	32.31	29.48	--	--
	263.11	421-6052	36.69	35.64	34.56	34.13
ABS	3263.1033	861-420	16.00	14.37	13.59	13.39
	3263.1133	421-6090	18.60	17.79	17.16	16.32

Strap



Type 1 L=195, W=23.5 Fixing Centres=160
Type 2 L=280, W=28.5 Fixing Centres=220

Type 1 (Top Image)

- Soft black reinforced with stiffening plate
- Nickel plated steel end caps

Type 2 (Bottom Image)

- Long, strong broad strap handle
- Nickel plated steel end caps to conceal the screw holes

214041

Mfrs. List No.	Order Code	1+	5+	10+	20+
Type 1 3248.1001	306-2399	9.55	8.58	8.10	7.65
Type 2 3349.1001	306-2405	21.02	18.90	17.88	16.83

Strap



- Soft black plastic handle
- Reinforced steel spring strap
- Steel end caps
- Fixing screws not supplied
- Suitable for containers and boxes

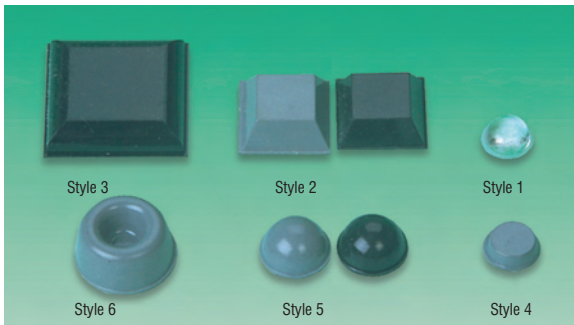
Fixing centres 214mm

H217

Order Code	1+	10+	20+	40+
861-455	3.12	2.82	2.67	2.52

Mounting Feet

Stick On Feet 'Bumpon'[™]



- Durable, skid-resistant polyurethane moulding
- Easy attachment with pressure sensitive adhesive
- Non-marking, non-slip resistant to most solvents.

Order Code	Mfrs. List No.	H	Dia.	Colour	Style
116-5067	SJ5302TRANS	2.2	7.9	Transparent	1
116-5068	SJ5306TRANS	3.8	9.5	Transparent	1
116-5071	SJ5303TRANS	5	11.1	Transparent	1
116-5063	SJ5312TRANS	3.5	12.7	Transparent	1
116-5072	SJ5008BLACK	3.1	12.7x12.7	Black	2
116-5066	SJ5018BLACK	5.8	12.7x12.7	Black	2
116-5064	SJ5018GREY	5.8	12.7x12.7	Grey	2
116-5079	SJ5023BLACK	7.6	20.6x20.6	Black	2
116-5080	SJ5023GREY	7.6	20.6x20.6	Grey	2
116-5081	SJ5705BLACK	6.1	x 31.7531.75	Black	3
116-5061	SJ5076BLACK	2.8	8	Black	4

Order Code	Mfrs. List No.	H	Dia.	Colour	Style
116-5073	SJ5012BLACK	3.5	12.7	Black	4
116-5083	SJ5780BLACK	5.5	20	Black	4
116-5074	SJ5003BLACK	5	11.1	Black	5
116-5075	SJ5003GREY	5	11.1	Grey	5
116-5076	SJ5027BLACK	7.9	16	Black	5
116-5077	SJ5027GREY	7.9	16	Grey	5
116-5078	SJ5017BLACK	9.6	19	Black	5
116-5065	SJ5009GREY	10.1	22.3	Grey	6

218850

Quantity Per Pack	Order Code	1+	10+	25+
144	116-5067	39.07	35.31	32.70
48	116-5068	14.82	13.39	12.35
56	116-5071	17.61	15.91	14.74
56	116-5063	16.00	14.36	13.55
80	116-5072	17.97	16.00	15.12
40	116-5066	12.92	11.47	10.84
40	116-5064	12.92	11.47	10.84
36	116-5079	18.86	16.73	15.88
36	116-5080	18.86	16.73	15.88
10	116-5081	19.89	17.99	15.25
56	116-5061	14.16	12.54	11.91
56	116-5073	16.00	14.36	13.55
25	116-5083	15.23	13.77	12.76
56	116-5074	16.45	14.65	13.83
56	116-5075	16.45	14.65	13.83
40	116-5076	27.92	24.85	23.44
40	116-5077	27.92	24.85	23.44
40	116-5078	35.53	31.56	29.99
48	116-5065	46.14	40.98	39.15

Instrument Case Feet

Screw Fixing



Type 1 Type 2

- Type 1 - Soft rubber feet. Ideal for use on instrument cases etc.
- Type 2 - Moulded in hard rubber. Bracing members prevent pull-through of fastening screw

218852

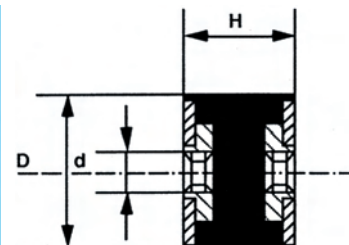
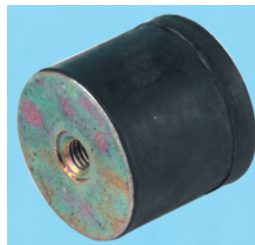
100 Per Pack	H	Dia.	Mtg. Hole Dia.	Order Code	1+	5+	10+	25+
Type 1								
10	15.9	3.5		320-237	28.56	26.87	24.79	20.63
10	19.1	3.5		320-249	29.40	27.28	25.48	21.20
10	22.2	3.5		320-250	35.02	32.79	30.46	25.39
20 Per Pack								
Type 2								
12.5	37.5	5.5		606-017	15.19	13.10	11.81	10.49

Anti-Vibration Mounts

Female to Female Bobbin Mounts



DD Series



- Female thread at either end

Note: The Max. Working Load figure is per bobbin not the distributed load
All dimensions are in mm, X = Amount the rubber is compressed when under the maximum working load

338562

D x H	Thread Size (d)	°IRHD	Max. Working Load (kg)	X (mm)	Order Code	1+	10+	50+	100+
20x20	M6	45	7.4	1.6	499-6630	7.39	6.44	6.02	5.18
20x20	M6	60	13.7	1.6	499-6641	7.49	6.58	6.12	5.24
20x25	M6	45	7.0	2.2	499-6653	7.39	6.48	6.02	5.18
25x20	M6	60	12.6	2.2	499-6665	7.39	6.48	6.02	5.18
25x15	M6	70	42.0	1.0	499-6677	7.23	6.31	5.89	5.05
25x25	M6	45	13.0	2.1	499-6689	6.71	5.86	5.47	4.69
25x25	M6	60	25.0	2.1	499-6690	6.87	5.99	5.57	4.78
40x30	M8	60	65.0	2.6	499-6707	8.07	7.06	6.58	5.66
40x35	M8	60	58.0	3.1	499-6719	8.07	7.06	6.58	5.63
40x35	M10	45	32.0	3.1	499-6720	8.59	7.52	7.00	6.02
40x35	M10	60	58.0	3.1	499-6732	8.04	7.03	6.54	5.63
40x40	M8	60	57.0	3.6	499-6744	8.46	7.39	6.87	5.92

D x H	Thread	*IRHD	Max. Load (kg)	X	Order Code	Price Each			
						1+	10+	50+	100+
50x30	M10	45	71.0	2.5	499-6756	11.16	9.77	9.08	7.81
50x30	M10	70	180.0	2.5	499-6768	10.81	9.47	8.82	7.58
50x35	M10	60	115.0	3.0	499-6770	11.72	10.25	9.54	8.20
50x45	M10	45	46.0	4.0	499-6781	12.47	10.90	10.16	8.72
50x45	M10	60	86.0	4.0	499-6793	11.26	9.86	9.18	7.88
50x45	M10	70	120.0	4.0	499-6800	12.17	10.64	9.90	8.53
70x70	M12	70	290.0	6.4	499-6811	27.96	24.45	22.75	19.56
100x55	M16	60	520.0	4.7	499-6823	51.53	45.08	41.92	36.07
100x55	M16	45	280.0	4.7	499-6835	51.92	45.44	42.28	36.36
100x55	M16	70	720.0	4.7	499-6847	51.49	45.05	41.89	36.03
100x60	M16	45	270.0	5.2	499-6859	50.62	44.27	41.18	35.41

Mounting Application Guide

PAULSTRA

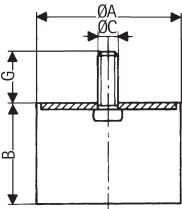
	DOMINANT RADIAL FLEXIBILITY			DOMINANT AXIAL FLEXIBILITY		LOW FREQUENCY
	RADIAFLEX	BECA	STABIFLEX	TRANIFLEX	NIVOFIX	
FANS						
AIR CONDITIONING						
PUMPS						
COMPRESSORS						
GEARBOXES						
GENERATING SETS						
IC ENGINES						
PLANT CABS						
VIBRATING TABLE/SCREENS						
HOPPERS						
MACHINE TOOLS						
PRESSES, GUILLOTINES						
GANTRIES						
CIVIL ENGINEERING						
CEILING, PIPEWORK						
LABORATORY EQUIPMENT						
ELECTRICAL ENCLOSURES						
TRANSFORMERS						
FRAGMENTERS						
SIEVES						

RECOMMENDED APPLICATION ACCEPTABLE APPLICATIONS

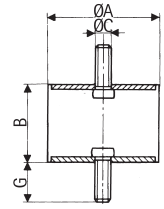
In general For fixed installations: Radiaflex and BECA For mobile installations: Stabiflex. These mountings must only be used in compression or shear and not in tension.

Radiaflex

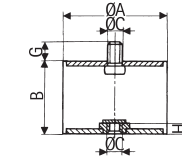
PAULSTRA



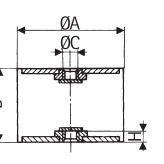
Single-threaded stud fixing



Two-threaded stud fixing



Combination fixing



Two-thread hole fixing

- Metalwork: mild steel, plated
- Natural rubber bonded
- Fixings: 4 options (male one end only, male/male, male/female, female/female)
- Greater radial flexibility than axial
- Install at any angle to suit application

Operation in shear is very useful for vibration isolation provided that the radial forces are not too great

ØA	B	ØC	G	Weight g	Compression Max. Load kg	Deflection Load kg	Max Load kg	Shear Deflection	Order Code
Single - Threaded Stud Fixing									
12.5	10	M5	10	5	12	2	N/A	N/A	710-8047
12.5	13.5	M5	10	5	11	2.5	N/A	N/A	710-8060
12.5	15	M5	10	5	10	3	N/A	N/A	710-8059
16	15	M5	12	7	20	3	N/A	N/A	710-7754
20	20	M6	16.5	15	30	5	N/A	N/A	710-7730
25.5	19	M8	20	25	55	4.5	N/A	N/A	710-7742
30	30	M8	25	40	70	8	N/A	N/A	710-7766
40	35	M10	25	80	120	8	N/A	N/A	710-7778
50	25	M10	25	95	300	6	N/A	N/A	710-7780
60	36	M10	25	165	300	9	N/A	N/A	710-7791
70	35	M10	25	250	450	9	N/A	N/A	710-7808
80	30	M14	35	315	950	8	N/A	N/A	710-7810
Two - Threaded Stud Fixing									
12.5	15	M5	10	7	N/A	3	2.5	2	710-7821
16	15	M5	12	10	N/A	3	2.5	2	710-7845
20	20	M6	16.5	20	N/A	4.5	5	3.5	710-7857
25.5	22	M8	20	40	N/A	4	8	4	710-7833
30	30	M8	25	55	N/A	8	11	6	710-7869
40	35	M10	25	110	N/A	8	20	6.5	710-7870
50	25	M10	25	130	N/A	6	25	4.5	710-7882
60	45	M10	25	240	N/A	11	30	9	710-7894
70	50	M10	25	400	N/A	11	35	11	710-7900
100	50	M16	47	960	N/A	12	60	10	710-7912
Combination Fixing									
16	15	M5	12	8	N/A	3	2.5	2	710-7924
20	25	M6	16.5	15	N/A	5.5	4.5	4.5	710-7936
25.5	25	M8	20	35	N/A	5	8	4.5	710-7948
30	40	M8	25	50	N/A	9	11	7.5	710-7950
40	40	M10	25	105	N/A	10	20	7.5	710-7961
50	35	M10	25	135	N/A	8	25	7	710-7973
Two - Threaded Holes Fixing									
16	15	M5	—	5	N/A	3	2	2	710-7985
20	20	M6	—	10	N/A	4.5	5	3.5	710-7997
25.5	25	M8	—	30	N/A	4.5	8	4.5	710-8000
30	30	M8	—	30	N/A	7.5	11	6	710-8011
40	40	M10	—	85	N/A	10	20	7.5	710-8023
50	45	M10	—	130	N/A	10	25	9	710-8035

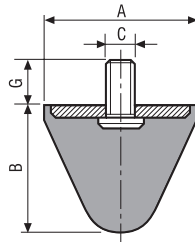
211733

Mfrs. List No.	Order Code	1+	12+	24+	48+	+
Single - Threaded Stud Fixing						
511110	710-8047	4.44	4.05	3.69	3.58	--
511110	710-8047	4.44	4.05	3.69	3.58	--
511128	710-8060	4.44	4.05	3.69	3.53	--
511115	710-8059	4.62	4.20	3.84	3.72	--
511294	710-7754	4.62	4.20	3.84	3.72	--
511220	710-7730	5.52	5.01	4.59	4.46	--
511251	710-7742	5.76	5.25	4.80	4.65	--
511312	710-7766	6.96	6.33	5.79	5.67	--
511452	710-7778	9.42	8.55	7.86	7.63	--
511525	710-7780	11.82	10.74	9.84	9.63	--
511635	710-7791	19.14	17.40	15.96	15.53	--
511735	710-7808	25.02	22.74	20.85	20.27	--
511830	710-7810	32.34	29.40	26.94	26.18	--
Two - Threaded Stud Fixing						
521128	710-7821	4.80	4.35	3.99	3.91	--
521294	710-7845	5.10	4.65	4.26	4.18	--
521297	710-7857	6.18	5.61	5.16	5.02	--
521251	710-7833	6.66	6.06	5.55	5.44	--
521312	710-7869	8.10	7.35	6.75	6.56	--
521452	710-7870	10.74	9.75	8.94	8.74	--
521580	710-7882	14.16	12.87	11.79	11.49	--
521641	710-7894	23.04	20.94	19.20	18.65	--
521710	710-7900	34.14	31.05	30.41	--	--
521909	710-7912	74.22	67.47	61.86	60.12	--
Combination Fixing						
520011	710-7924	6.96	6.33	5.79	5.63	--
520017	710-7936	8.04	7.32	6.69	6.41	--
520022	710-7948	8.94	8.13	7.44	7.25	--
520028	710-7950	10.62	9.66	8.85	8.60	--
520032	710-7961	14.88	13.53	12.39	12.04	--
520035	710-7973	19.92	18.12	16.59	16.04	--
Two - Threaded Holes Fixing						
520501	710-7985	7.50	6.81	6.24	6.09	--
520506	710-7997	8.34	7.59	6.96	6.74	--
520512	710-8000	9.78	8.88	8.16	7.90	--
520517	710-8011	11.58	10.53	9.66	9.39	--
520522	710-8023	16.08	14.61	13.41	13.06	--
520526	710-8035	21.78	19.80	18.15	17.67	--

1,000's of products added every month, check out the very latest products, news and information at: www.farnell-newarkinone.com.sg

The very latest NEW products

Conical Progressive Stop



- Metalwork: mild steel, plated
- Natural rubber bonded
- Fixings: single -threaded stud

- Profiled for optimum snubbing
- High deformation allows a high level of energy to be absorbed

Stops must be fitted so that on impact the axis of the stop is perpendicular to the contact surface.

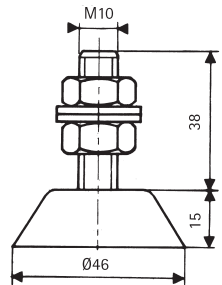
Applications: Avoid hammering and deterioration of equipment due to shocks.

ØA	B	ØC	G	Weight g	Repetitive Shocks			Except Shock		Order Code
					Energy Joules	Deflection	React kg	Energy Joules		
25.5	19	M8	20	20	30	8	100	9	711-0730	
50	64	M8	35	40	32	370	120	150	711-0741	
72	58	M12	30	50	26	550	150	300	711-0753	

stc111

Mfrs. List No.	Order Code	Price Each				
		4+	12+	24+	48+	+
512251	711-0730	4.68	4.26	4.06	--	--
512502	711-0741	15.06	13.68	12.54	12.18	--
512721	711-0753	21.36	19.41	17.79	17.34	--

Miniflix®



PAULSTRA

- Metalwork: mild steel plated and stainless steel
- Natural rubber: grey or black with anti-slip ridged surfaces
- Fixings: one threaded stud complete with nuts and washers

Applications: installation of electrical/electronic enclosures, packaging equipment, test/measuring equipment and food.

Hardness	Colour	Recommended		Deflect Max.	Wgt g	Order Code
		Load kg				
Mild Steel						
50	Grey	30-40		0.9	80	711-1459
80	Black	80-100		1.05	80	711-1460
Stainless Steel						
50	Grey	30-40		0.9	80	711-1472
80	Black	80-100		1.05	80	711-1484

stc117

Mfrs. List No.	Order Code	Price Each				
		1+	12+	24+	48+	+
530805-50	711-1459	14.64	13.32	12.21	11.35	--
530805-80	711-1460	14.64	13.32	12.21	11.35	--
530806-50	711-1472	30.00	27.90	--	--	--
530806-80	711-1484	30.00	27.90	--	--	--

Brushes



Brush



- For sealing of passages, hinges, roller doors of all kinds
- Protect against dust, draughts, water, light, heat and noise
- Can be used to transport, guide and halt sensitive workpieces
- Galvanised steel strip, heat resistant even with large temperature fluctuations
- Suitable replacements for special, circular and roller brushes
- Can be cut to length easily using a hacksaw or bolt cutters
- Bristles manufactured from black nylon
- Can be ordered separately from carrier thus making significant replacement cost savings

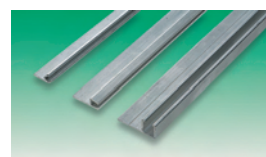
Type 10 - Suit light applications
Type 12 - Suit medium applications
Type 25 - Suit heavy applications

Type	Trim Height	Overall Height	Length	Mfrs. List No.	Order Code
10	15	19	1000	32100995	715-0878
10	20	24	1000	32101204	715-0880
10	25	29	1000	32100335	715-0891
10	30	34	1000	32100274	715-0908
12	35	40	1000	32121203	715-1550
12	40	45	1000	32123405	715-1561
12	50	55	1000	32121162	715-1573
12	75	80	1000	32121636	715-1585
25	35	45	2000	32251360	715-1962
25	50	60	2000	RIB16	715-1974
25	75	85	2000	RIB17	715-1986
25	100	110	2000	RIB18	715-1998
25	125	135	2000	RIB19	715-2000
25	150	160	2000	RIB20	715-2012

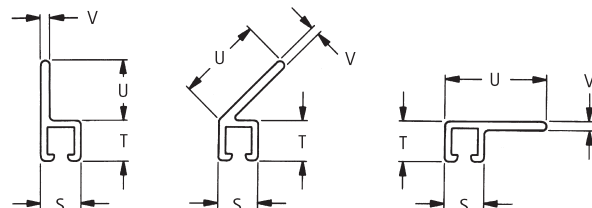
stc120

Type	Trim Height	Order Code	Price Each				
			1+	5+	10+	+	+
10	15	715-0878	8.76	7.80	7.02	--	--
10	20	715-0880	9.36	8.34	7.50	--	--
10	25	715-0891	9.96	8.88	7.98	--	--
10	30	715-0908	10.56	9.39	8.46	--	--
12	35	715-1550	16.35	14.52	13.08	--	--
12	40	715-1561	17.25	15.33	13.80	--	--
12	50	715-1573	21.00	18.66	16.80	--	--
12	75	715-1585	26.25	23.34	21.00	--	--
25	35	715-1962	57.45	51.06	45.96	--	--
25	50	715-1974	60.30	53.61	48.24	--	--
25	75	715-1986	66.30	58.92	53.04	--	--
25	100	715-1998	73.05	64.92	58.44	--	--
25	125	715-2000	80.16	71.28	64.14	--	--
25	150	715-2012	88.20	78.39	70.56	--	--

Carrier for Brush



- Aluminium carriers suitable for use with strip brushes
- A variety of configurations enable versatile mounting to meet most requirement
- Can be cut to length easily using a hacksaw or bolt cutters



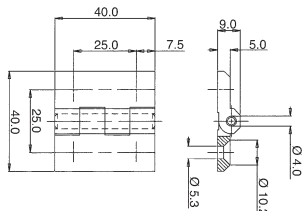
Brush Type	Angle°	S	T	U	V	Length	Mfrs. List No.	Order Code
10	180	6.5	6.7	10.8	1.6	1000	RIC05	715-1445
10	45	6.5	6.7	16.0	1.6	1000	RIC06	715-1457
10	90	6.5	6.7	11.0	1.6	1000	RIC07	715-1469
12	180	7.7	8.4	10.6	1.8	1000	RIC12	715-1615
12	45	8.1	8.4	17.0	1.8	1000	RIC13	715-1627
12	90	8.1	8.4	10.6	1.8	1000	RIC14	715-1639
25	180	13.5	14.5	19.5	2.0	2000	RIC21	715-2127
25	45	13.5	14.5	29.0	2.0	2000	RIC22	715-2139
25	90	13.5	14.5	21.5	2.0	2000	RIC23	715-2140

slc121

Type	Angle°	Order Code	1+	5+	10+	50+	+
10	180	715-1445	7.41	6.57	5.92	4.94	--
10	45	715-1457	7.41	6.57	5.92	4.94	--
10	90	715-1469	7.41	6.57	5.92	4.94	--
12	180	715-1615	9.59	8.52	7.67	6.40	--
12	45	715-1627	9.59	8.52	7.67	6.40	--
12	90	715-1639	9.59	8.52	7.67	6.40	--
25	180	715-2127	32.34	28.73	25.87	21.55	--
25	45	715-2139	32.34	28.73	25.87	21.55	--
25	90	715-2140	32.34	28.73	25.87	21.55	--

Hinges

Screw-On



● Available in chrome-plated or black-plated die cast zinc



211797

	Order Code	1+	10+	20+	50+
Chrome	717-4240	22.05	17.64	14.80	13.02
Black	717-4251	41.85	--	--	--

Sealing Strip

Sealing Strip Clip-On Profile



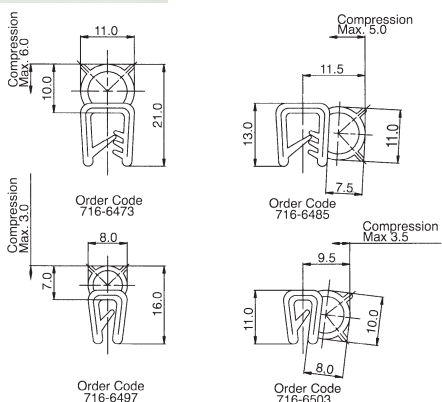
- A range of four black EPDM rubber clip-on profiles
- Self-gripping feature achieved by a steel spring core
- 716-6473 & 716-6485 - panel thickness 10-35mm
- 716-6497 & 716-6503 - panel thickness 0.8-2.5mm

Operating temperature -40°C to +120°C

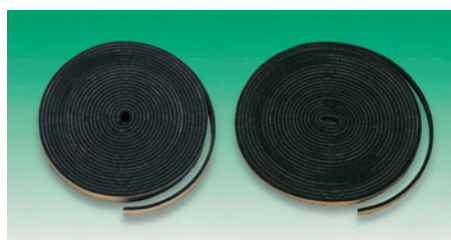


211767.401053

Profile	List No.	Order Code	1+	+	+	+
	209-0201	716-6473	94.66	--	--	--
	209-0202	716-6485	94.66	--	--	--
	209-0205	716-6497	94.66	--	--	--
	209-0206	716-6503	94.66	--	--	--



Neoprene Sealing Tape



- Two sizes of neoprene closed cell sealing tape
- Applications include draft exclusion and vibration damping

Max. operating temperature +80°C

211768.401054

10 Metres Per Reel	Order Code	1+	5+	10+	25+
Size mm					
10x5	716-6539	22.50	20.46	19.56	18.00
20x5	716-6540	34.88	--	--	--

Flexible Strip Adhesive Backed



- Barium ferrite loaded flexible thermoplastic
 - Soft material helps prevent slippage on vertical surfaces
 - Acrylic adhesive backed
- Ideal for:- Door closures, reed switch operators, signs, shelf marking
- Thickness = 0.8mm

214002.401261

10M Per Coil	Order Code	1+	5+	10+	50+
Width					
7.5	723-9166	25.21	22.11	21.00	19.68
12.5	723-9178	37.13	33.45	31.56	29.73
20	723-9180	57.88	52.11	49.20	46.32
10 Strips Per Pack					
Size					
12.7mm x 100mm	723-9191	6.40	5.79	5.37	5.13

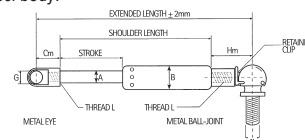
Gas Springs

Gas Springs



- Supplied at full force with a release valve
- The force of the gas spring can be reduced to meet your requirements
- The release of gas (i.e. force) is achieved with an extremely reliable and safe aircraft-standard valve
- Pack contains two gas springs, four metal ball joints, four metal eyes, a release valve key, full instructions on how to release gas and a safety instruction leaflet

The plunger is hard chrome finished steel with a black powder epoxy coated steel body.



Size A	Stroke	Shoulder Length	N	Thread	L Length	Order Code
6	60	184	M5	M6	11	710-0668
	100	264	M5	M6	11	710-0670
	150	364	M5	M6	11	710-0681
8	200	464	M5	M6	11	710-0693
	100	268	M8	M8	14	710-0700
	150	368	M8	M8	14	710-0814
10	200	468	M8	M8	14	710-0826
	250	568	M8	M8	14	710-0838
	100	265	M8	M10	10	710-0840
14	200	465	M8	M10	10	710-0851
	250	565	M8	M10	10	710-0863
	300	665	M8	M10	10	710-0875
14	100	280	M10	M10	14	710-0887
	200	480	M10	M10	14	710-0899
	300	680	M10	M10	14	710-0905
	400	880	M10	M10	14	710-0917
	500	1080	M10	M10	14	710-0929

Size A	B	Cm	Em	Fm ∅	G ∅	Hm	P1 Force Newtons
6	15	18	6	10	6	32	40—400
8	18	21	9	14	8	30	100—600
10	23	30	10	16	10	30	150—1200
14	28	35	10	20	14	35	250—2500

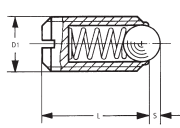
211732

Prices are in Singapore Dollars and exclusive of GST. Due to the volatile nature of certain products, prices are subject to change without notice.

2 Per Pack Order Code	1+		3+		Price Per Pair	
	1+	3+	6+	10+	+	+
710-0668	111.76	102.48	95.01	91.61	--	--
710-0670	112.35	103.35	95.55	93.93	--	--
710-0681	121.90	111.60	104.76	96.25	--	--
710-0693	108.12	99.45	98.58	--	--	--
710-0700	100.29	92.28	90.68	--	--	--
710-0814	120.45	110.79	110.21	--	--	--
710-0826	114.81	113.46	--	--	--	--
710-0838	116.40	115.92	--	--	--	--
710-0840	129.78	123.78	--	--	--	--
710-0851	138.39	128.57	--	--	--	--
710-0863	133.41	132.06	--	--	--	--
710-0875	136.01	--	--	--	--	--
710-0887	215.01	197.04	184.88	--	--	--
710-0899	225.06	204.87	193.29	174.57	--	--
710-0905	238.80	215.28	205.02	--	--	--
710-0917	246.45	226.59	218.55	--	--	--
710-0929	254.28	231.51	220.92	--	--	--

Clamping Elements

Spring Plunger (Ball and Slot)



- Ideal for location
- Applying pressure points

- Lifting off applications

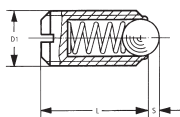
Material: Free cutting steel, blacked, ball hardened.

Thread D1	Length L	Stroke S	Ball Ø	Initial Pressure N	Final Pressure N	Mfrs. List No.	Order Code
M4	9	0.8	2.5	8	16	3210.W004	707-2636
M5	12	0.9	3	7	13	3210.W005	707-2648
M6	14	1	3.5	11	16	3210.W006	707-2650
M8	16	1.5	5	21	35	3210.W008	707-2661
M10	19	2	6	24	44	3210.W010	707-2673

211877

Thread Size	Order Code	1+	20+	50+	100+	+
M4	707-2636	2.37	2.19	2.01	1.86	--
M5	707-2648	2.37	2.19	2.01	1.86	--
M6	707-2650	2.37	2.19	2.01	1.86	--
M8	707-2661	3.18	2.88	2.64	2.46	--
M10	707-2673	3.15	2.88	2.64	2.46	--

Stainless Steel Spring Plunger (Ball and Slot)



- Heat resistant up to 250°C
- Ideal for location

- Applying pressure points
- Lifting off applications

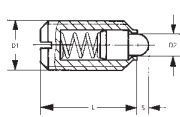
Material: Stainless steel - including ball and spring.

Thread D1	Length L	Stroke S	Ball Ø	Initial Pressure N	Final Pressure N	Mfrs. List No.	Order Code
M4	9	0.8	2.5	8	16	3210.W404	707-2788
M5	12	0.9	3	7	13	3210.W405	707-2790
M6	14	1	3.5	11	16	3210.W406	707-2806
M8	16	1.5	5	21	35	3210.W408	707-2818
M10	19	2	6	24	44	3210.W410	707-2820

211878

Thread Size	Order Code	1+	20+	50+	100+	+
M4	707-2788	7.44	6.75	6.21	5.77	--
M5	707-2790	7.44	6.75	6.21	5.77	--
M6	707-2806	7.44	6.75	6.21	5.77	--
M8	707-2818	9.60	8.73	8.01	7.44	--
M10	707-2820	11.28	10.26	9.39	8.74	--

Spring Plunger (Pin and Slot)



- Ideal for location
- Applying pressure points

- Lifting off applications

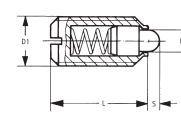
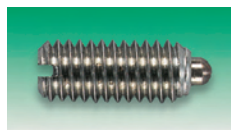
Material: Free cutting steel, blacked, thrust pin hardened.

Thread D1	Length L	Stroke S	Pin Size D2	Initial Pressure N	Final Pressure N	Mfrs. List No.	Order Code
M4	9	1.5	1.8	6	20	3215.W104	707-3021
M5	12	2	2.4	6	20	3215.W105	707-3033
M6	14	2	2.7	7	20	3215.W106	707-3045
M8	16	2	4	18	37	3215.W108	707-3057
M10	19	2.5	4.5	21	45	3125.W110	707-3069

211879

Thread Size	Order Code	1+	20+	50+	100+	+
M4	707-3021	2.70	2.46	2.25	2.09	--
M5	707-3033	2.70	2.46	2.25	2.12	--
M6	707-3045	2.70	2.46	2.25	2.09	--
M8	707-3057	3.45	3.15	2.91	2.70	--
M10	707-3069	3.75	3.45	3.15	2.93	--

Stainless Steel Spring Plunger (Pin and Slot)



- Heat resistant to 250°C
- Ideal for location
- Applying pressure points
- Lifting off applications

Material: Stainless steel - including pin and spring

Thread D1	Length L	Stroke S	Pin Size D2	Initial Pressure N	Final Pressure N	Mfrs. List No.	Order Code
M4	9	1.5	1.8	6	20	3215.W504	706-8001
M5	12	2	2.4	6	20	3215.W505	706-8013
M6	14	2	2.7	7	20	3215.W506	706-8025
M8	16	2	4	18	37	3215.W508	706-8037
M10	19	2.5	4.5	21	45	3215.W510	706-8049

211730

Thread Size	Order Code	1+	20+	50+	100+	+
M4	706-8001	8.34	7.59	6.96	6.46	--
M5	706-8013	8.34	7.59	6.96	6.46	--
M6	706-8025	8.34	7.59	6.96	6.46	--
M8	706-8037	10.47	9.54	8.76	8.14	--
M10	706-8049	12.69	11.55	10.59	9.86	--

Wire Rope

Wire Rope - Stainless Steel



- 7x7 Construction
- Manufactured to BSMA29 1982

Ø	Minimum Breaking Load (tonnes)	Weight kg/100mm	Order Code
3	0.54	3.7	721-6038
5	1.5	10.3	721-6040

211809

75m Per Reel	Order Code	1+	3+	10+
3	721-6038	182.32	167.17	159.42
5	721-6040	364.61	334.28	318.81

Chain Accessories

Carbine Hooks

Zinc-Plated



211854

10 Per Box	Size	Max. Rec. Load (kg)*	Order Code	1+	3+	5+	10+	+
4	50	706-3118	32.70	29.74	27.25	24.13	--	--
6	150	706-3120	34.78	31.63	28.98	26.88	--	--
8	300	706-3131	42.59	38.71	35.50	32.36	--	--
10	450	706-3143	58.15	52.86	48.45	44.31	--	--
12	600	706-3155	88.77	80.70	73.96	68.45	--	--

* This is only an approximate value

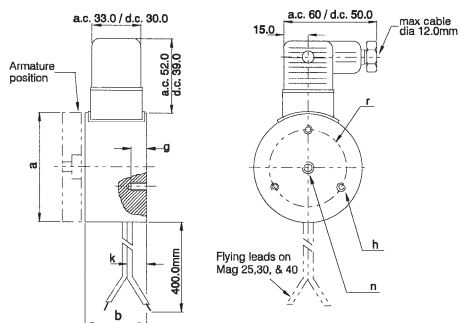
22

Knobs, Handles, Latches & Hardware

Compliant
Non-compliant
RoHS
Limited stock - RoHS replacement available

Electric Locking

Electromagnets
Energise to Hold



- Powerful range of electromagnets with holding forces 140N to 1400N as standard
- Directly interchangeable with most European designs
- Ease of installation
- Optimum performance when used with Stephenson Gobin keeper plates
- Body: bright zinc-plated / clear passivated
- Applications include 'pick-and-place' processes, remote access systems & machine guards
- UK- manufactured

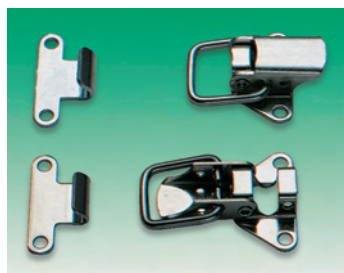
∅ mm	N	Power Cons		a	b	g	h	k	n	r	Weight g
		W									
25	140	4		25	20.5	4	M3	6.5	M5	15	70
30	230	4		30	24	5	M3	7.0	M5	18	200
40	500	5		40	27.5	5	M4	9.0	M6	26	220
50	750	6		50	30.5	5	M4	8.5	M6	34	380
65	1400	9		65	35.5	6	M5	8.5	M8	40	750

211887

	Order Code	Price Each				
		1+	2+	5+	10+	+
25mm						
12V dc	720-0821	70.08	67.38	64.89	60.42	--
24V dc	720-0833	70.08	67.38	64.89	60.42	--
30mm						
12V dc	720-0857	80.34	77.25	74.40	69.27	--
24V dc	720-0869	80.34	77.25	74.40	69.27	--
40mm						
12V dc	720-0882	86.46	83.13	80.07	74.52	--
24V dc	720-0894	86.46	83.13	80.07	74.52	--
50mm						
12V dc	720-0912	115.08	110.64	106.56	99.21	--
24V dc	720-0924	115.08	110.64	106.56	99.21	--
240V ac	720-0936	153.00	147.12	141.66	131.91	--
65mm						
12V dc	720-0948	120.42	115.80	111.51	103.80	--
24V dc	720-0950	120.42	115.80	111.51	103.80	--
240V ac	720-0961	177.36	170.55	164.22	152.91	--

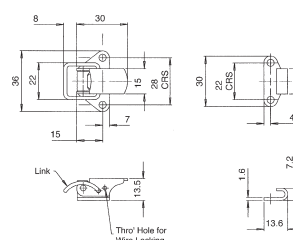
Toggle Latches

Compact, Rigid Link, Strong



- Neat, compact appearance
- With 3mm ∅ straight link
- Bright zinc steel or stainless steel (Grade 316) versions
- 5mm pull up
- Locking hole feature
- Rivet base

Compact, Curved Link



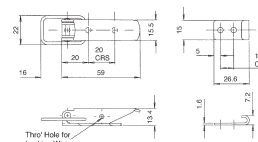
- Neat, compact appearance
- Curved link with 5mm pull up
- Locking hole feature
- Rivet base

- Versions available in zinc-plated steel, chrome-plated steel and stainless steel (Grade 304)

211772

	Order Code	Price Each				
		2+	6+	10+	20+	+
Chrome-plated	716-7064	3.18	2.94	2.67	2.44	--
Stainless Steel	716-7076	4.62	4.20	3.90	3.56	--
Zinc-plated	717-1468	2.07	1.92	1.77	1.58	--

Slim-Line Rigid Link



- Neat appearance-base contained within lever envelope
- With straight link
- Locking hole feature
- Rivet base
- 15mm pull up

- Versions available in zinc-plated steel, chrome-plated steel and stainless steel (Grade 304)
- Each kit is supplied with two designs of strike

211774

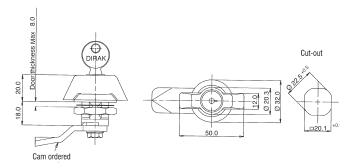
	Order Code	Price Each			
		2+	6+	10+	20+
Zinc-plated	716-7805	2.31	2.10	1.92	1.79
Chrome-plated	716-7817	3.54	3.24	2.94	2.74
Stainless steel	716-7829	4.92	4.47	4.08	3.79

90 Degree Rotational Handle Locks

Wing Handles



- Polyamide finish
- Keys alike



Cam should be ordered separately

222287

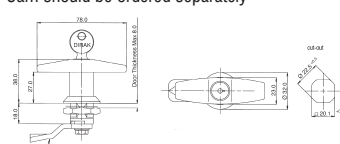
	Order Code	1+	5+	10+	25+	+
Non-locking	715-9870	18.90	15.30	12.90	11.86	--
Locking	715-9882	25.80	20.70	17.25	16.04	--

'T' Handles



- Keys alike
- Chrome finish

Cam should be ordered separately

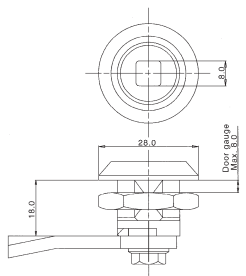


222289

	Order Code	1+	5+	10+	25+	+
Non-locking	716-1232	27.00	21.60	18.00	16.74	--
Locking	716-1244	50.10	39.90	33.30	30.92	--

Quarter - Turn Lock Kits

8mm Square Key, IP65



- 90° stroke lock kit complete with 8mm square insert key
- Selection of 4 different cams included to allow optimum flexibility of fit
- Grip range from 16mm to 22mm

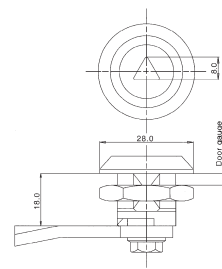
211757

Size	Order Code	1+	5+	10+	25+	+
Chrome	716-1979	21.30	17.10	14.40	13.25	--
Black	716-1980	21.30	17.10	14.40	13.25	--

Product Watch
 • FREE to all account holders
 • Notification of obsolete, end of line and end of stock items
 • Replacement or upgrade recommendations

Advanced warning of obsolete components

8mm Triangular Key, IP65

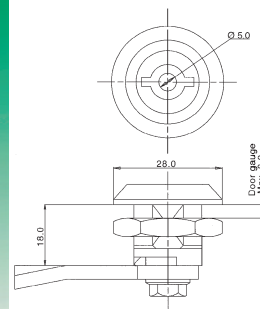


- 90° stroke lock kit complete with 8mm triangular insert key
- Selection of 4 different cams included to allow optimum flexibility of fit

211758

Size	Order Code	1+	5+	10+	25+	+
Chrome	716-2248	21.60	17.10	14.69	--	--
Black	716-2250	21.60	17.10	14.40	13.25	--

5mm Double Bit Key, IP65



- 90° stroke lock kit complete with 5mm double bit insert key
- Selection of 4 different cams included to allow optimum flexibility of fit

211759

Size	Order Code	1+	5+	10+	25+	+
Chrome	716-2340	21.60	17.10	14.40	13.25	--
Black	716-2352	21.60	17.10	14.40	13.25	--

Padlocks

Brass and Steel



- Brass Open Hardened Steel Shackle**
- Double bolted except 20 & 25mm
 - Also available as a pair with alike keys
- Brass Long Hardened Steel Shackle**
- Ideal for gates, trailers and petrol pumps
- Brass with Stainless Steel Shackle**
- Totally weatherproof
- Brass/Black Vinyl Sheath with Brass Shackle**
- Totally Weatherproof
 - Marine, non sparking. Ideal for hazardous area & food industry
- Brass Close Hardened Steel Shackle**
- Crowbar Protection
- Stainless Steel Body & Close Shackle**
- Crowbar protection
 - All corrosion free components
 - Double ball bearing locking

All have Pin Tumbler and self locking mechanism. Supplied with 2 keys.

Type	(mm)	Shackle Ø	Clearance	Clearance	List No.	Order Code
Brass Open Hardened Steel Shackle						
1	20	3	11	9	A0065 20	518-980
1	25	4	15	14	A0065 25	721-8588
1	30	4	17	16	A0065 30	720-2260
1	40	6	24	22	A0065 40	108-747
1	50	8	29	28	A0065 50	518-992
1	60	9	35	35	A0065 60	519-005
Brass Long Hardened Steel Shackle						
2	40	6	63	22	A0065HB4X6	519-017
2	50	8	80	28	A0065HB5X8	720-2258



Brass with Stainless Steel Shackle						
1	50	8	29	28	A0065IBC 50	720-2222
Brass/Black Vinyl with Black Shackle						
3	25	4	11	12	A0084T25	560-947
3	30	5	14	14	A0084T30	720-2271
3	40	6.3	21	20	A0084T40	560-959
Brass Close Hardened Steel Shackle						
4	40	5.5	19	19	A0065CS 40	721-8590
4	50	8.5	21	19	A0065CS 50	721-8606
Stainless Steel Body & Close Shackle						
4	50	9.5	21	19	A0090 50	721-8618
Brass Open Hardened Steel Shackle						
1	25	4	15	14	A0065TW 25	720-2234
1	40	6	24	22	A0065TW 40	720-2246

230293

Size (mm)	Order Code	1+	10+	25+	50+
Brass Open Hardened Steel Shackle					
20	518-980	8.31	7.53	7.32	6.87
25	721-8588	9.63	8.67	8.43	7.95
30	720-2260	11.73	10.56	10.29	9.66
40	108-747	15.51	13.98	13.89	12.87
50	518-992	21.57	19.41	18.90	17.79
60	519-005	27.57	24.81	23.70	20.85
Brass Long Hardened Steel Shackle					
40	519-017	16.29	14.67	14.40	13.47
50	720-2258	21.66	19.50	18.96	17.85
Brass with Stainless Steel Shackle					
50	720-2222	24.69	22.17	20.46	--
Brass/Black Vinyl Sheath with Brass Shackle					
25	560-947	10.02	9.03	8.79	8.31
30	720-2271	13.02	11.76	11.43	10.74
40	560-959	15.93	14.37	13.95	13.17
Brass Close Hardened Steel Shackle					
40	721-8590	18.06	16.23	15.81	15.44
50	721-8606	28.68	25.83	25.08	23.67
Stainless Steel Body and Close Shackle					
50	721-8618	79.08	71.19	69.21	65.25
2 Per Pack					
Pair of alike keyed		1+	10+	25+	50+
25	720-2234	18.99	17.07	16.62	15.66
40	720-2246	29.43	26.52	25.77	24.30

Coloured Coded



- Coloured body giving simple identification system
- Totally weather proof
- Marine, non sparking, ideal for hazardous area and food industry
- Available with different keys or keys alike (same colour only)



Size (mm)	Shackle Ø	Clearance	Clearance
44	6.3	21	20

212955

Different Keys	Mfrs. List No.	Order Code	1+	10+	25+	50+
Red	A0084TR 40	721-8620	15.93	14.34	13.95	13.14
Yellow	A0084TY 40	721-8631	15.93	14.34	13.95	13.14
Green	A0084TG 40	721-8643	15.93	14.34	13.95	13.14
Blue	A0084TBL 40	721-8655	15.93	14.34	13.95	13.14
Grey	A0084TGY 40	721-8667	15.93	14.34	13.95	13.14
Black	A0084T40	560-959	15.93	14.37	13.95	13.17
Keys Alike (For same colour)						
Red	A0084T40KA 4	721-8679	16.02	14.43	14.04	13.20
Yellow	A0084T40KA 2	721-8680	16.02	14.43	14.04	13.20
Green	A0084T40KA 3	721-8692	16.02	14.43	14.04	13.20
Blue	A0084T40KA 6	721-8709	16.02	14.43	14.04	13.20
Grey	A0084T40KA 5	721-8710	16.02	14.43	14.04	13.20
Black	A0084T40KA 1	721-8722	16.02	14.43	14.04	13.20

Combination



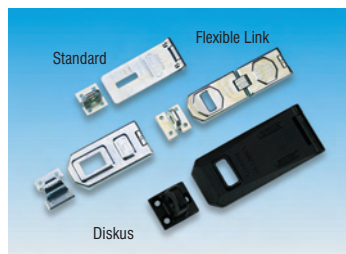
- No key required
- 3 Digit combination (4 on 720-2301)
- Selectable personal code



Size (mm)	Shackle Ø	Vertical Clearance	Horizontal Clearance	Mfrs. List No.	Order Code
Light Duty		3	9	A0155 20	720-2283
		15	14	A0155 30	519-030
Heavy Duty	7.5	25	29	A0160 50	720-2301

212953

Hasp and Staples



- Steel construction, hidden screw locations
- Corrosion protection
- Supplied complete with fixings
- Staple and pins hardened
- Flexible link version for use around corners

Length	Width	Staple Hole Ø	Mfrs. List No.	Order Code
Standard				
75	29	9	A0200C 75	720-2568
95	39	13.4	A0200C 95	519-066
115	47	13.4	A0200C 115	720-2556
Flexible Link				
155	45	12.2	A0110C 155	720-2570
Diskus				
120	56	12.5	A0140C 120	519-054
190	56	12.5	A0140C 190	720-2581

212948

Length	Order Code	1+	10+	25+	50+
Standard					
75	720-2568	7.65	6.90	6.69	6.37
95	519-066	11.13	10.02	9.57	8.88
115	720-2556	14.04	12.63	12.30	11.72
Flexible Link					
155	720-2570	31.02	30.18	29.34	27.66
Diskus					
120	519-054	29.40	26.46	25.74	24.27
190	720-2581	40.29	36.27	35.25	33.27

High Security



- Chrome on Brass**
 - Granit disc locking mechanism
 - Double ball bearing locking for extra-trength
 - Satin chrome on brass for high visual-strength
- Cast Molybdenum Steel Body - SilverRock**
 - Through-hardened Shackle
 - High level of resistance to physical attack
 - Double ball bearing locking for extra-trength

Size (mm)	Shackle Ø	Clearance	Clearance	List No.	Order Code
Chrome on Brass					
40	7	22	22	A0088 40	720-2192
50	9.5	25	24	A0088 50	720-2209
Cast Molybdenum Steel Body					
50	9	26	25	A0027 50	720-2180

212950

Size (mm)	Order Code	1+	10+	25+	50+
Chrome on Brass					
40	720-2192	53.64	48.24	46.92	44.22
50	720-2209	63.96	57.54	55.95	52.74
Cast Molybdenum Steel Body					
50	720-2180	69.33	62.40	60.66	57.18