

STORAGE PRODUCTS

HEAVY-DUTY MULTICOMPARTMENT PARTS BOXES



- Variety of Compartment Configurations

K-824

Rugged utility boxes are ideal for organizing hardware, precision parts, electronic components, medical or lab supplies. Hinged overlapping lid fastens securely. 2 versions available: high-impact, transparent K-Resin construction; or conductive version constructed of black carbon-filled plastic for static-sensitive parts. Made in the U.S.A.

TRANSPARENT K-RESIN SMALL PARTS BOXES

Mfg. Part No.	L x W x D	Compartments	Stock No.	Price Each	
				1-9	10-24
K-203	4.50 x 8.25 x 1.375"	6	44N4966	5.72	5.13
K-606	6.75 x 11.00 x 1.75"	6	44N4960	11.28	10.12
K-806	9.00 x 13.125 x 2.313"	6	44N4963	16.53	14.83
K-208	4.50 x 8.25 x 1.375"	12	44N4967	5.28	4.73
K-602	6.75 x 11.00 x 1.75"	12	44N4961	11.28	10.12
K-812	9.00 x 13.125 x 2.313"	12	44N4964	17.84	16.00
K-200	4.50 x 8.25 x 1.375"	18	44N4968	5.72	5.13
K-618	6.75 x 11.00 x 1.75"	18	44N4962	11.28	10.12
K-824	9.00 x 13.125 x 2.313"	24	44N4965	17.84	16.00
K-166	7.00 x 10.00 x 1.813"	36	44N4969	12.15	10.90

CONDUCTIVE PLASTIC UTILITY BOXES

CB-6001	6.75 x 11.00 x 1.75"	1	87N2413	24.31	22.59
CB-8001	9.00 x 13.125 x 2.313"	1	87N2415	43.59	40.49
CB-6018	6.75 x 11.00 x 1.75"	18	87N2414	29.08	27.01
CB-8024	9.00 x 13.125 x 2.313"	24	87N2416	48.03	44.62

(7055)

SMALL PARTS STORAGE CHESTS



These deluxe professional units are designed to organize, store, and protect precision tools, hardware, and small parts. Used by mechanics, repairmen, and technicians. Feature removable drawers, padlock tab, dual positive latches, luggage handle, and sound-dampening rubber feet. Front panel folds down to open chest, and slides under bottom tray, out of the way. Some drawers have adjustable dividers, allowing 7 to 13 varied-size compartments. Oil- and chemical-resistant. Mfg. part no. TCB-276 is 2-tone mahogany and birch tan, with 6 orange colored drawers. Mfg. part no. TCB-277 is the same except with 7 drawers. Made in the U.S.A.

Mfg. Part No.	Drawers	H x W x D	Stock No.	Price Each	
				1-4	
TCB-276	6	15.00 x 19.50 x 10.375"	44N4958	165.14	
TCB-277	7	15.00 x 19.50 x 10.375"	44N4959	165.14	

(7179)

ADJUSTABLE COMPARTMENT SMALL PARTS BOXES



Made from translucent, chemical- and shatter-resistant polypropylene. Include removable dividers which can be adjusted in 1" intervals. Made in the U.S.A.

8467-0329

Mfg. Part No.	Compartments	Dividers	L x W x D	Stock No.	Price Each	
					1-4	
8467-0327	3-14	12	7 x 3 1/2 x 1 1/8"	16N074	4.07	
8467-0328	3-14	12	9 x 4 1/2 x 1 5/8"	16N075	4.94	
SPC9995	4-24	20	15 1/8 x 8 1/2 x 1 1/2"	14C7818	14.19	

(7222)

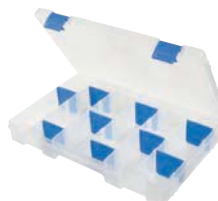
COMPARTMENTED BOXES



A-SERIES™ BOX



K-SERIES™ BOX



TUFF TAINER® BOX



IDS™ (INFINITE DIVIDER SYSTEM) BOX

With a selection of sizes and material types finding the right compartmented box to accommodate your project needs has never been easier.

A-SERIES™ BOX

The A-Series has a distinct stout look with very square corners and true 90° walls. Still a very popular pick with customers from many industries.

Mfg. Part No.	Material	No. of Fixed Compartments	No. of Removable Dividers	Dimensions (in.) L x W x D	Stock No.	Price 1-49
A210	Styrene	9	...	6 3/4" x 3 3/16" x 1 3/16"	78M8078	3.25

K-SERIES™ BOX

Noted for heavy-duty applications, this styrene butadiene copolymer box has excellent impact properties and also maintains scratch resistance and transparent qualities.

K206	Styrene Butadiene Copolymer	1	...	8" x 4" x 1 3/16"	78M8079	5.11
------	-----------------------------	---	-----	-------------------	---------	------

TUFF TAINER® BOX

Tuff Tainer® is made with polypropylene and features a detachable lid and movable dividers that allow you to configure your compartment space to your liking. The majority of these boxes include 2 positive locking latches and will resist most common chemicals, gasoline and oil. Tuff Tainer® boxes with Zerust®, a new advanced polymer technology that creates a harmless vapor barrier around your parts inhibiting corrosion for up to five years.

Mfg. Part No.	Material	No. of Fixed Compartments	No. of Removable Dividers	Dimensions (in.) L x W x D	Stock No.	Price 1-49
T4007ZR	Translucent Polypropylene	6	12	10 5/8" x 6 5/8" x 1 9/16"	78M8080	5.39

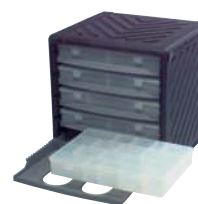
IDS™ (INFINITE DIVIDER SYSTEM) BOX

This ultimate organizational system gives you the flexibility you have always dreamed of by allowing you to move each divider 1/16 (0.16 cm) of an inch along the ribbed compartment (US Patent 4,838,445). IDS boxes fit in the IDS Cabinet; go online or call.

T600IDS	Polypropylene	6	10	10 1/2" x 6 3/16" x 1 9/16"	78M8081	8.05
---------	---------------	---	----	-----------------------------	---------	------

(106506)

SMALL PARTS CABINET



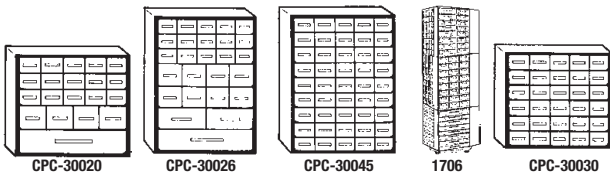
Ruggedly constructed, textured polypropylene cabinets are scratch-resistant and dentproof. Interlocking grid design allows cabinets to be stacked top-to-bottom and side-to-side. Holds 5 translucent multicompartment utility boxes that slide out like drawers. These boxes are lightweight and easy to remove and carry. They feature hinged lid and adjustable interior dividers for space flexibility. Ideal for organizing hardware, precision parts, electronic components, medical and lab supplies. Made in the U.S.A. Mfg. part no. TB-900 utility boxes also available separately; go online or call.

Mfg. Part No.	Stock No.	Price Each
1709	92N3711	133.34

(15541)

STORAGE PRODUCTS

300 SERIES COPOLYMER-FRAME CONDUCTIVE STORAGE CABINETS



Durable cabinets protect against static damage with copolymer shells and drawers and static ground wire. Rustproof, dentproof construction. Meet military specification DOD-HDT3K-263. **Mfg. part no. 1706** tower system holds 16 large (16.5"H) cabinets. Tower turns on a ball-bearing base. Ideal for stockroom, sales floor, or workshop. Provides a large storage area that is 70" high. *Order drawer dividers separately; go online or call.*

Mfg. Part No.	Drawers	Drawer H x W x D	Overall Cabinet H x W x D	Stock No.	Price Each
					1-4
CPC-30020	15	1.375x2.000x5.313" (34.93x50.80x134.95)	11.25x12.00x6.00" (285.75x304.80x152.40)	84N1453	90.57
	4	2.250x2.500x5.313" (57.15x63.50x134.95)			
	1	2.250x1.00x5.313" (57.15x27.90x134.95)			
CPC-30026	15	1.375x2.000x5.313" (34.93x50.80x134.95)	16.50x12.00x6.00" (419.10x304.80x152.40)	84N1454	120.38
	8	2.250x2.500x5.313" (57.15x63.50x134.95)			
	2	2.250x5.312x5.313" (57.15x50.80x134.95)			
	1	2.250x1.00x5.313" (57.15x27.90x134.95)			
CPC-30030	30	1.375x2.000x5.313" (34.93x50.80x134.95)	11.25x12.00x6.00" (285.75x304.80x152.40)	84N1455	83.77
CPC-30045	45	1.375x2.000x5.313" (34.93x50.80x134.95)	16.50x12.00x6.00" (419.10x304.80x152.40)	84N1456	121.56
1706	Tower System		70x18 x18"	92N3708	379.88

(7176)

PORTABLE SMALL PARTS COMPARTMENTED CASES



SC-748

- Handsome, Satchel-Style Cases with See-Through Lids, Molded from Rugged Copolymer Resin
- Comfortable Luggage-Style Handles; Positive Latches Keep Lids Securely Closed
- Adjustable Cases Have Removable Dividers for Custom Design
- Used by Professionals in Virtually Every Area of Sales or Service

Boxes are molded from rustproof copolymer resins and feature tinted covers. **Mfg. part no. SC-748** is a 2-sided case and has 9 to 24 compartments per side. **Mfg. part no. SC-724** is the same, but 1-sided only. **8467** series cases fit into **mfg. part nos 8537-0695** and **8537-0696** sliding racks, *ordered separately, on pages 2124-2125*

SMALL

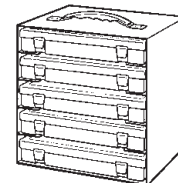
Mfg. Part No.	H x W x D	Compartments	Stock No.	Price Each
				1-9
SC-724	11.75 x 15.50 x 2.50"	9-24 Adjustable	44N4956	22.83
SC-748	11.75 x 15.50 x 5.00"	18-48 Adjustable	44N4957	50.10

LARGE

8467-0332	13.00 x 18.50 x 3.00"	4-16 Adjustable	16N079	35.42
8467-0333	13.00 x 18.50 x 3.00"	21 Fixed	16N080	32.79

(7226)

PLASTIC COMPARTMENT BOXES AND STORAGE RACKS



8537-0714

- Ideal for storing small parts and electronic components

Storage boxes manufactured from high-strength, oil-resistant polypropylene. Feature 2 snap latches and heavy-duty, reinforced hinges that allow lid to stand open. Handy metal storage racks hold 5 storage boxes. Rack features durable gray baked enamel finish. Keyhole slots permit wall mounting of rack. Convenient handle on top of rack can be removed for stacking. Racks enable use of floor or table-top space.

SMALL

Mfg. Part No.	H x W x D	Compartments	Stock No.	Price Each
				1-4
8537-0705	1.75 x 11 x 6.75"	6	16N2329	9.63
8537-0706	1.75 x 11 x 6.75"	12	16N2330	9.99
8537-0707	1.75 x 11 x 6.75"	13	16N2331	9.99
8537-0708	1.75 x 11 x 6.75"	18	16N2332	9.99
8537-0714	10.75 x 11.25 x 6.75"	Rack Only	16N2338	53.18

LARGE

8537-0709	2.31 x 13.13 x 9"	6	16N2333	13.93
8537-0710	2.31 x 13.13 x 9"	12	16N2334	13.93
8537-0712	2.31 x 13.13 x 9"	24	16N2336	13.93
8537-0713	13.25 x 13.50 x 9.12"	Rack Only	16N2337	65.01

(7225)

PLASTIC FRAME STORAGE CABINETS



High-density storage can be achieved with these all-plastic cabinets. Maximize any work area by organizing and storing tools, hardware or parts. Designed with a sturdy shell and drawer rail structure for extra strength. These rugged cabinets can be stacked or wall mounted for greater storage flexibility. Drawers are all molded in clear styrene resin for optimum visibility and speedy retrieval of contents. Each cabinet features drawer stops to prevent accidental spills.



Mfg. Part No.	No. of Drawers	H x W x D (Inches)	Stock No.	Price Each
				1-9
SPC11294	20	11.25 x 12 x 6	34C7537	30.55
SPC11295	26	16.50 x 12 x 6	34C7538	29.46
SPC11296	30	11.25 x 12 x 6	34C7539	30.55
SPC11297	45	16.50 x 12 x 6	34C7540	38.32

(68818)

SINGLE COMPARTMENT PLASTIC CASES



Features:

- 13.125inch sq.
- "Acid Free" polypropylene, with black latches
- Positive Contact Latch System
- Stackable

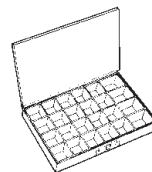


Used in many industries as a kit for replacement parts. All plastic cases are made out of "Acid Free" polypropylene, with a positive contact latch system.

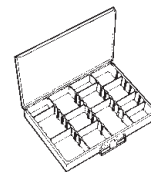
Mfg. Part No.	Depth (in)	Stock No.	Price Each
SPC20118	1.75	83K0631	16.51
SPC20120	3	83K0633	19.26

(88551)

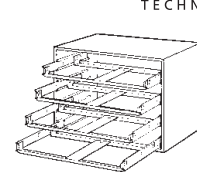
SCOOP COMPARTMENT BOXES, SLIDING RACKS, AND BASES



8537-0691



8537-0694



8537-0696

Durable rust- and acid-resistant steel boxes with gray baked-enamel finish. Feature high-impact plastic inserts with rounded design to ease part removal. **Mfg. part nos. 8537-0701** and **8537-0694** adjustable boxes allow customizing the number and size of compartments with 9 removable dividers. Drawers ride on coated slides and tracks and have stops to prevent accidental pull-out. Slide racks enable easy storage and access to 2 or 4 boxes. Reinforced metal rack bases support loaded boxes in the open position without tilting.

SMALL

Mfg. Part No.	H x W x D	Description	Stock No.	Price Each
				1-4
8537-0699	2.00 x 13.38 x 9.25"	16 Compartment Box	16N2322	31.81
8537-0698	2.00 x 13.38 x 9.25"	20 Compartment Box	16N2321	32.28
8537-0701	2.00 x 13.38 x 9.25"	Adjustable Box	16N2325	34.05

LARGE

Mfg. Part No.	H x W x D	Description	Stock No.	Price Each
				1-4
8537-0692	3.00 x 18.00 x 12.00"	12 Compartment Box	16N2315	45.88
8537-0691	3.00 x 18.00 x 12.00"	24 Compartment Box	16N2314	42.55

➔ CONTINUED ➔

STORAGE PRODUCTS

SCOOP COMPARTMENT BOXES, SLIDING RACKS, AND BASES (CONT.)

LARGE

Mfg. Part No.	H x W x D	Description	Stock No.	Price Each	
				1-4	
8537-0694	3.00 x 18.00 x 12.00"	Adjustable Box	16N2317	47.65	
8537-0696	15.00 x 20.00 x 15.75"	Slide Rack Only (Holds 4 Boxes)	16N2319	133.37	

(7227)

AKROBINS® AND ESD AKROBINS® STORAGE BINS



Optimize storage space and organize more efficiently by using AkroBin® heavy-duty storage bins. Sturdy, one-piece molded polypropylene construction is water-, rust-, and corrosion-proof and unaffected by weak acids and alkalis. Easily stacked together or hang from Akro-Mils louvered racks and panels, rail racks, and carts for high-density storage. Choose from a wide assortment of sizes. Color: blue. Also available in red, yellow, green and stone; go online or call.

AKROBINS®

Mfg. Part No.	Inside Dimensions (Inches)			Stock No.	Price Each	
	L	W	H		1-9	
30-210 BLUE	4¾	3⅞	2⅞	80W089	1.78	
30-220 BLUE	6¾	3⅞	2⅞	80W090	3.44	
30-230 BLUE	10¼	4¾	4¾	80W091	8.22	
30-235 BLUE	10¼	10	4¾	46F7471	13.87	
30-239 BLUE	10	6⅞	6¾	46F7472	14.97	
30-240 BLUE	14	6⅞	6¾	80W092	16.22	
30-250 BLUE	14	14¾	6¾	80W093	25.26	

33" WIDE AKROBINS® — 33"W x 8½"L x 5"H, 80-LB. CAPACITY

These 33" wide AkroBins® are great for storing multiple sizes and shapes of materials including extra long parts. Heavy-duty polypropylene construction with rigid grid design on base for additional load support and reinforced sides for secure stacking. Features full-width hanger lip to support bin on hanging systems. Fits on standard Akro-Mils rail, louver and 36" shelf systems. Large label area on front accommodates multiple labels. Choice of five colors: blue, red, yellow, green and stone. Removable bin dividers for creating up to eight internal compartments are available; go online or call.

Mfg. Part No.	Color	Stock No.	Price Each	
			1-9	
30320BLUE	Blue	84M7536	25.34	
30320RED	Red	84M7538	25.34	
30320GREEN	Green	84M7537	25.34	
30320YELLOW	Yellow	84M7540	15.13	
30320STONE	Stone	84M7539	25.34	

ESD AKROBINS®

ESD AkroBins® containers dissipate electrostatic charges which can severely damage sensitive electronic components. Color: black only.

Mfg. Part No.	Fit Bench Rack*	Inside Dimensions (Inches)			Stock No.	Price Each	
		L	W	H		1-9	
30210ESD	40	4¾	3⅞	2⅞	48F2479	6.28	
30220ESD	40	6¾	3⅞	2⅞	48F2480	8.47	
30230ESD	18	10¼	4¾	4¾	48F2482	19.07	
30235ESD	9	10¼	10	4¾	48F2483	29.88	
30240ESD	8	14	6⅞	6¾	48F2484	49.42	

(7133)

AKRO-GRIDS

- Versatile Work-In-Process Transfer Containers
- Resist Most Solvents and Chemicals
- Color: Gray (Blue Pictured)



Compatible with most racks, shelving, and automated material handling equipment, these containers resist most solvents and chemicals. Dividers allow subdivision of the containers down to a 1¼" square compartment size. Available in 8 different sizes and 2 additional colors; go online or call.

Mfg. Part No.	Outside Dimensions			Rim W	Rim L	Inside Dimensions			Capacity Cu. Ft.	Stock No.	Price Each	
	L	W	H			L	W	H			1-9	
33164G	16½	10½	4	9%	14½%	14½%	9%	3%	0.29	32C8332	11.24	
33168G	16½	10½	8	9%	14½%	14%	9%	7%	0.59	32C8333	19.50	
33220G	22½	17%	10	15%	20%	19%	14%	9%	1.66	32C8334	33.85	
33226G	22½	17%	6	15%	20%	19%	14%	5%	0.96	32C8336	25.59	

ACCESSORIES

Dividers allow sub-division of the containers down to a 1¼" square compartment size. No. of Dividers = maximum number of dividers that will fit that grid. Color: black. Sold in quantity of 6.

▶ CONTINUED ▶

AKRO-GRIDS (CONT.)

LONG DIVIDERS

Mfg. Part No.	No. of Dividers	Fits Grid No.	Stock No.	Price Each	
				1-9	
42164	7	33164	32C8391	16.29	
42168	7	33168	32C8392	20.60	
42168	11	33220	32C8392	20.60	
42224	11	33224	32C8394	21.74	
42226	11	33226	32C8395	23.78	

SHORT DIVIDERS

41164	11	33164	32C8386	12.13	
41168	11	33168	32C8387	14.60	
41220	15	33220	32C8388	35.41	

Clear plastic label holders snap securely on any side of the container. Sold in quantity of 6.

LABEL HOLDERS

Mfg. Part No.	Description	Stock No.	Price Each	
			1-9	
35010	Fits all Akro-Grids, Except 33164 and 33224	32C8337	16.69	
35011	Fits Grids No. 33164 and 33224	32C8338	14.50	

(68707)

19 SERIES HEAVY-DUTY STEEL STORAGE CABINETS AND STORAGE-GO-ROUND STORAGE CABINET RACK



19-715



Storage-Go-Round with Turntable Base

- For industrial-strength small parts storage that stands up to the toughest environment
- Two steel cabinets fit side-by-side on standard 36" wide shelving
- Choice of five different drawer sizes
- Removable drawers are rust-, corrosion- and dent-proof
- Molded-in label holder and transparent drawers allow instant content identification
- Unique rear stop tab on each drawer prevents spills

19 series heavy-duty steel cabinets organize and protect components. A variety of drawer configurations provide versatile storage solutions. Cabinet features heavy-duty welded steel frame with gray chip-proof, powder-coated finish. High-impact, polypropylene transparent drawers are removable and dividable. Comes complete with two dividers and one label for each drawer. Cabinets stack securely and are wall mountable or create a carousel-type storage system with mfg. part no. 98325 Storage-Go-Round storage cabinet rack; ordered separately below.

19 SERIES HEAVY-DUTY STEEL STORAGE CABINETS — 11"L x 17"W x 11"H

Mfg. Part No.	No. of Drawers	Drawer Dimensions L x W x H (in.)	Stock No.	Price Each	
				1-4	
19228	28	10⅞ x 2⅞ x 2⅞	27C9417	151.15	
19-320	20	10⅞ x 3⅞ x 2⅞	80W062	135.88	
19-416	16	10⅞ x 4 x 2⅞	80W050	139.42	
19-715	15	10⅞ x 3⅞ x 3⅞	80W063	139.42	
19-909	9	10⅞ x 5⅞ x 3⅞	80W064	139.42	

STORAGE-GO-ROUND STORAGE CABINET RACK — 31"L x 31"W x 60"H

Storage-Go-Round storage cabinet rack with turntable base is a rotating storage system for housing and organizing small parts, tools, and products. Holds up to 20 19 series 17" wide steel storage cabinets; ordered separately above. Provides access to as many as 560 drawers in less than three square feet of floor space. Holds up to 1000 lbs. of parts. Assembly required.

Mfg. Part No.	Description	Stock No.	Price Each
98325	Storage-Go-Round Storage Cabinet Rack	66F4373	761.19

(7112)



eInvoices

Now you can view, print or email Newark invoices from our website under MY ACCOUNT eSuite. Log in or register today.

(148830)

STORAGE PRODUCTS

STACKABLE STORAGE CABINETS

- Strong plastic cabinets organize and protect components
- A variety of drawer configurations provide versatile storage solutions
- Cabinets stack securely and are wall mountable
- Polypropylene drawers: unbreakable, flexible, strong, see-through, chemical resistant



Mfg. part nos. 10126 and 10144 combo cabinets feature two drawer sizes.

Mfg. Part No.	Cabinet Size L x W x H (in.)	Drawer Size L x W x H (in.)	Stock No.	Price Each	
				1-9	1-9
10116	6 3/8 x 10 9/16 x 8 1/2	5 1/4 x 2 1/8 x 1 1/2	30H0871	22.60	
10126	6 3/8 x 20 x 10 1 1/2	(20) 5 1/4 x 2 1/8 x 1 1/2 (6) 5 1/4 x 4 3/8 x 2	30H0873	33.59	
10124	6 3/8 x 20 x 15 13/16	5 1/4 x 4 3/8 x 2	30H0872	44.21	
10144	6 3/8 x 20 x 15 13/16	(32) 5 1/4 x 2 1/8 x 1 1/2 (12) 5 1/4 x 4 3/8 x 2	30H0874	44.21	
10164	6 3/8 x 20 x 15/13/16	5 1/4 x 2 1/8 x 1 1/2	30H0875	45.83	

(7129)

HEAVY-DUTY TOOL BOXES

- Rugged Plastic - Akro ProBoxes.
- Color: Red
- Carry fully loaded boxes with confidence.
- Steel draw latch snaps tightly closed.
- Handle provides comfortable, secure grip.
- Oversized padlock eye accepts large padlock for securing tools.
- Trays included in 14", 17", and 20" Akro ProBox.



Mfg. Part No.	L x W x H (Inches)	Stock No.	Price Each	
			1-9	1-9
09912	6 x 12 x 4	92C0704	5.76	
09514	8 x 14 x 8 1/8	30H0867	16.15	
09517	9 3/8 x 17 x 8 3/4	30H0868	23.46	
09520	10 1/4 x 20 x 10 5/8	30H0869	24.71	

(7131)

NEST AND STACK TOTES

- Smooth, High-Density Polyethylene Will Not Rust, Corrode, or Bend Out of Shape Even When Fully Loaded
 - Gray NSTs - Manufactured From FDA-Approved Materials
- Color: Gray (Blue pictured). Other colors and sizes also available; go online or call.



Mfg. Part No.	Outside Dimensions			Rim W	Rim L	Inside Dimensions			Capacity Cu. Ft.	Stock No.	Price Each	
	L	W	H			L	W	H			1-9	1-9
35180G	18	11	6	10	16	15 1/4	9 3/8	5 1/8	0.50	32C8339	13.98	
35185G	18	11	9	10	16	15 1/4	9 3/8	8 3/8	0.76	32C8340	17.78	
35190G	19 1/2	15 1/2	10	14 1/2	17	16	13 3/4	9 7/8	1.20	32C8341	27.57	
35195G	19 1/2	15 1/2	13	14 1/2	17	15 1/4	13 3/4	12 7/8	1.70	32C8342	28.65	
35200G	19 1/2	13 1/2	8	12 3/4	17 1/2	16 1/2	11 1/2	7 1/8	0.80	32C8343	24.28	
35225GREY	23 1/2	19 1/2	10	18 1/4	20 1/2	19 1/2	16 1/8	9 7/8	2.00	32C8344	34.72	
35230G	23 1/2	19 1/2	13	18 3/4	20 1/2	19 1/2	16 1/8	12 7/8	2.60	32C8345	41.36	
35240G	23 1/2	15 1/2	12	14 3/4	20 1/2	19 1/2	13	11 7/8	1.70	32C8346	37.61	
35300G	29 1/2	19 1/2	15	18 1/4	26 1/2	25 1/2	16 1/8	14 7/8	3.70	32C8347	68.66	

LABEL HOLDER

Clear plastic label holder attach easily to NST's. Accommodate labels up to 3" x 5". One size fits all totes. Sold in Quantity of 6.

Mfg. Part No.	Stock No.	Price per Pkg.	
		1-9	1-9
35010	32C8337	16.69	

(68706)

AKROBIN® CABINETS WITH REMOVABLE STORAGE BINS



AC3624Y3AS
AkroBin® Cabinet with 3 Shelves



AC3618Y
AkroBin® Cabinet with Flush Doors

- Fully assembled and ready-to-use
- Constructed from 16-gauge steel
- Popular gray powder-coat finish
- Removable, bright yellow AkroBin® storage bins included
- Louvered panel on back wall
- Locking double doors with two keys

AkroBin® steel cabinets are perfect for storing and protecting parts, tools, supplies and personal belongings from dust, damage and theft. Each cabinet comes complete with yellow AkroBin® polypropylene storage bins in assorted sizes to customize a unique storage system. Additional AkroBins® are available; order separately on page 2125.

AKROBIN® CABINET WITH 3 SHELVES AND 102 STORAGE BINS — 36"W x 24"D x 78"H
Mfg. part no. AC3624Y3AS AkroBin® cabinet features three full 24" shelves, louvered panel on doors and back wall to securely hold up to 102 AkroBins®. Comes complete with 102 yellow AkroBin® polypropylene storage bins: 48 5 3/8" L x 4 1/8" W x 3 7/8" H bins, 48 7 3/8" L x 4 1/8" W x 3 7/8" H bins and six 14 3/4" L x 16 1/2" W x 7 7/8" H bins.

Mfg. Part No.	Description	Stock No.	Price Each
AC3624Y3AS	AkroBin® Cabinet with 3 Shelves and 102 Storage Bins	41J4061	1864.57

AKROBIN® CABINET WITH FLUSH DOORS AND 42 STORAGE BINS — 36"W x 18"D x 78"H
Mfg. part no. AC3618Y AkroBin® cabinet features flush doors and louvered panel on back wall that holds up to 42 AkroBins®. Comes complete with 42 yellow AkroBin® polypropylene storage bins: 24 10-7/8" L x 5-1/2" W x 5 7/8" H bins, 12 14-3/4" L x 8-1/4" W x 7 7/8" H bins and six 14-3/4" L x 16-1/2" W x 7 7/8" H bins.

Mfg. Part No.	Description	Stock No.	Price Each
AC3618Y	AkroBin® Cabinet with Flush Doors and 42 Storage Bins	41J4060	1459.73

(64374)

STORAGE CASES



- Grid Design in Lid Keeps Items in Their Own Compartments
- Small and Medium Cases Include 4 Front-to-Back Adjustable Dividers
- Large Cases Include 5 Front-to-Back Adjustable Dividers



Mfg. Part No.	Description	Fixed Dividers	(L x W x H)	Stock No.	Price Each	
					1-9	1-9
05705	Small Case	2	8 3/8 x 5 1/8 x 1 1/8"	32C8287	4.68	
05805	Medium Case	2	11 x 7 x 2 3/8"	32C8290	6.92	
05905	Large Case	2	14 3/8 x 9 1/2 x 2 1/2"	32C8293	9.31	

(68790)

PROCART™ WORK CARTS



Large and Small ProCarts™
(Shown with Hinged Sides Up)



Large ProCart™
(Shown with Installed 9-Rail Hanging System Holding AkroBins® — All Ordered Separately)

- Converts to a flat-top or box-top by flipping hinged side gates on shelves up or down
- Molded-in top storage compartments to keep small items within easy reach during transport
- Comfortable, full-width handle provides easy maneuverability
- I-beam post makes loading/unloading large boxes on lower shelf easy
- Smooth, rounded corners and edges for added safety

ProCart™ work carts are customizable work centers perfect for wherever portable storage is needed. Constructed of high-density polyethylene structural foam that's dent-resistant, rustproof and never needs painting. Ergonomic and user-friendly for easy maneuverability. Durable 5" non-marking wheels — 2 locking, 2 non-locking. Maximum cart load capacity 400 lbs.; 200 lbs. per top and bottom shelf. Assembly required. Mfg. part nos. 30900 and 30906 9-rail hanging systems add the capability of hanging AkroBins® and modular cabinets on the ProCart™; order separately below. A wide assortment of AkroBins® are available; order separately on page 2125.

PROCARTS™

Mfg. Part No.	Description	L x W x H (in.)	Stock No.	Price Each
30930G	Small ProCart™	40 x 19 1/2 x 34 3/4	95B3789	271.47
30936G	Large ProCart™	45 x 24 x 34 3/4	95B3790	319.38

➔ CONTINUED ➔

STORAGE PRODUCTS

PROCART™ WORK CARTS (CONT.)

9-RAIL HANGING SYSTEMS FOR PROCART™

Mfg. Part No.	Description	L x W x H (in.)	Stock No.	Price Each
30900	9-Rail Hanging System for Small ProCart™	30¾ x 1¾ x 1	95B3787	64.18
30906	9-Rail Hanging System for Large ProCart™	35¾ x 1¾ x 1	95B3788	85.08

(47983)

ZERO CENTURION® ELITE CARRYING CASES



- Lightweight, Yet Durable, Heat-Treated Aluminum Exterior
- High-Strength, Injection-Molded Handle and Aluminum Feet
- Triple-Digit Combination Lock with High-Quality Latches
- Foam Cushion Inserts and Panel Support Brackets Available

ZERO Centurion® Elite carrying cases feature high-strength, lightweight aluminum shells with styling ribs for increased structural integrity. Positive seat, ball-type, chrome-plated latches. Continuous aluminum stainless steel pin hinges. Silver/clear anodized aluminum heat-treated case shell. Double-band design characterizes the ZERO Centurion® Elite case. Textured black powder paint finish also available; *contact your local Newark sales office. Order foam cushion insert sets and internal panel mounting bracket separately, go online or call.*

Mfg. Part No.	H x W x L	Material Thickness	Weight	Stock No.	Price Each
					1-2
100X-SI	9.00 x 5.00 x 12.00"	0.040"	3.3 lbs.	85F027	216.51
101X-SI	9.00 x 7.75 x 16.00"	0.051"	5.0 lbs.	85F028	300.36
103X-SI	13.00 x 6.00 x 18.00"	0.040"	5.4 lbs.	85F026	266.95
106X-SI	17.00 x 7.50 x 21.00"	0.051"	8.4 lbs.	85F030	384.08
110X-SI	18.00 x 9.00 x 26.00"	0.051"	10.8 lbs.	85F032	436.20
129X-SI	20.00 x 9.94 x 29.00"	0.051"	13.8 lbs.	85F031	488.82

(16836)

TEST EQUIPMENT CART



Equipment cart features slanted top for convenient viewing angle and adjustable back support. Lower shelf for storage, heavy-duty casters. Color: gray. Dimensions: 33.5H x 16W x 19"D.

Mfg. Part No.	Description	Stock No.	Price Each
			1-2
21-1925	Test Equipment Cart	92F5415	95.95

(32192)

5-DRAWER MOBILE WORK CENTER



- Heavy-Duty Work Surface
- Supports up to 250 Lbs.
- Color: Black

Built-in cord wrap allows neat and convenient storage of power tools and work lights. Casters provide portability and are lockable for safety. Locking bar provides security and holds drawers securely in place.

Mfg. Part No.	Description	Dimensions (in.)	Stock No.	Price Each
				1-2
7734-88	5-Drawer Mobile Work Center	32-5/8L x 19¾W x 33-1/2H	73C8976	559.26

(72168)

MEDIAMASTER® AUDIO-VISUAL CARTS



- Adjustable strap helps secure audio-visual equipment
- Structural web, metal reinforced shelves
- Recessed storage slot holds small items
- Molded-in texture helps minimize slipping on top shelf surface
- Wire management details help organize wires and cords

Mfg. part nos. 9728-00 and 9729-00 feature sturdy commercial-grade aluminum uprights that will not dent or rust. Molded round handles that are easy to grip and aid maneuverability. 3" (7.6 cm) diameter non-marking and locking swivel casters provide easy mobility. UL rated and CSA listed 3-outlet power strip with cord includes handy cord wrap to secure loose cord. Capacity: 150 lbs. 32 3/4" L x 18 3/4" W x 33" H. Color: Black.

➔ CONTINUED ➔

MEDIAMASTER® AUDIO-VISUAL CARTS (CONT.)

Mfg. Part No.	Description	Stock No.	Price Each
9728-00	MediaMaster Audio-Visual Cart, Open Cart w/3 Shelves	83K0711	221.49
9729-00	MediaMaster Audio-Visual Cart, 3 Shelves w/Cabinet	83K0712	398.04

(87988)

TRADEMASTER® PROFESSIONAL CONTRACTOR'S CART



- Tough structural foam work surface lid with key lock
- Comfort grip, user-friendly handle
- 4 hooks for hanging extension cords, ladders, etc.
- 3 outlet, surge protected power strip/cord with cord wrap
- 4" deep, steel drawer with molded-in handle
- Full extension, ball bearing drawer slides
- 90% assembled

Mfg. part no. 4535-88 is the ideal mobile workstation for electricians, tradesmen and maintenance professionals. 5" non-marking caster, 2 fixed and 2 swivel with total lock brakes. Capacity: 500 lbs. 52.5L x 38.63W x 37.88" H. Color: Black.

Mfg. Part No.	Description	Stock No.	Price Each
4535-88	Trademaster Mobile Cabinet and Work Center	83K0710	693.36

(87989)

FLAT SHELF CARTS



Carts for moving PCs and workstations and transport of oversized, bulky items. Non-marking casters for easy movement. Capacity: 500 lbs., 250 lbs. per shelf. Dimensions: 4505 series 38L x 19W x 33"H, 4594 series 38L x 19"W, 4525 series 44L x 26W x 33"H. Color: Beige. Also available in black; *go online or call.*

4505

Mfg. Part No.	Description	Stock No.	Price Each
			1-2
4505-BEIGE	Cart	01F182	316.24
4594-BEIGE	Shelf	01F184	99.84
4525-BEIGE	Cart	01F183	351.64

(12330)

HEAVY-DUTY SERVICE/UTILITY CARTS



Perfect for transporting equipment and heavy loads in any environment. Sturdy structural foam construction won't rust, dent, chip or peel. Rounded corners protect walls and furniture. Lightweight and maneuverable. Large, non-marking casters. Shown with optional middle shelf. Capacity: 500 lbs. Capacity: 500 lbs. Dimensions: 4500-88 series 39L x 18W x 33"H, 4597 middle shelf 16W x 30L x 3"H, 4520-88 series 45L x 26W x 33"H, 4598 middle shelf 24W x 36L x 3"H. Color: Beige. Also available in black; *go online or call.*

Mfg. Part No.	Description	Stock No.	Price Each
4500-88BEIGE	4500-88, 2 Shelf Utility Cart	83H2306	297.44
4520-88BEIGE	4520-88, 2 Shelf Utility Cart	83H4391	337.73

ACCESSORIES

4597-88	Middle Shelf for 4500-88 Utility Cart	65J9793	103.55
459888 BEIG	Middle Shelf for 4520-88 Utility Cart	13J2966	161.16

(12331)

X-TRA™ UTILITY CARTS



Light-duty utility carts with large shelves, 300 lbs. total load capacity; 100 lbs. per shelf. Available in 2 styles: open-sided or with two enclosed-ends. Dimensions: 40-5/8L x 20W x 37 1/16"H.

4091 Open-Sided

Mfg. Part No.	Description	Color	Stock No.	Price Each
				1-2
4091	Open-Sided	Black	83F7452	400.14
4092	Two Enclosed-Ends	White	83F7453	532.80

(34494)

STORAGE PRODUCTS • TOOL CASES

X-TRA™ INSTRUMENT CART



4094 series instrument cart features locking doors to keep parts and tools safe. Sliding top drawer. Easy-to-clean shelves. Pound-together assembly with 2 molded handles. Capacity: 300 lbs, 100 lbs per shelf. 40-5/8L x 20W x 38"H. Color: gray.

Mfg. Part No.	Description	Stock No.	Price Each
			1-2
4094-GRAY	Instrument Cart	01F194	610.50

(12333)

TRADE TITAN™ INDUSTRIAL WORK CARTS

- Heavy duty structural foam construction
- Steel reinforced base deck
- Industrial grade 6" x 2" rubber casters with total lock breaks
- Non-marking, round rubber thread for smooth, quiet performance
- 4" x 4 1/2" steel top caster plate and heavy duty 1/2" axles
- 26" cart width easily fits through standard doorways



Industrial Work Cart



Industrial Work Cart w/ Locking Cabinet

Mfg. part nos. **48-60-5010** and **48-60-5015** features a large 16" x 16" work surface and material cutting groove at 38" work height; fabrication and cutting operations are comfortable and secure. Dedicated storage for frequently used tools. Large open storage area with a 4 1/2" lip keeps fasteners and small parts organized. Hooks to store extension cords and hoses. Extended front deck allows a 6" ladder to be secured, while still allowing the cart to clear standard 80" doorway. 13.5"L x 52" W x 27"H. Color: Gray/Red.

Mfg. Part No.	Description	Stock No.	Price Each
48-60-5010	Trade Titan Industrial Work Cart	84K7697	639.10
48-60-5015	Trade Titan Industrial Work Cart with Locking Cabinet	84K7698	780.62

(88103)

BUS/TOTE BOXES



Stackable utility boxes feature reinforced handles, ribs, and bottom. Rounded corners. Extra-strong rim. Easy to clean. Dimensions: **3349 series** 20L x 15W x 5"D and capacity of 4.5 gallons, **3351 series** 21-1/2L x 17W x 7"L and capacity of 7.5 gallons.

Mfg. Part No.	Capacity	Stock No.	Price Each
			1-2
3349-GRAY	4.5 Gal.	01F189	15.13
3351-GRAY	7.5 Gal.	01F190	23.81

(12334)

MOBILE TWO-STEP STEP STOOL



2523 series heavy-duty step stool glides on retractable rubber casters. Kicks quickly into place. 16" diameter base. 13" high with two steps. Supports loads up to 350 lbs.

Mfg. Part No.	Description	Stock No.	Price Each
			1-2
2523-BLACK	Step Stool	01F188	106.03

(12336)

MULTI-CARTS — PROFESSIONAL 8-IN-1 EQUIPMENT CARTS



Instantly transform into 8 configurations

- Extremely tough, textured powder-coat finish
- Non-skid frame bed surface resists load slippage
- Expandable frame adjusts to load size
- Spring-loaded wingbolts won't vibrate out
- Caster brake
- Stair climbers
- Strong tube axles 43% lighter than solid steel
- Foldable sides rotate & lock into place by pressing release cables
- Expandable frame accommodates innumerable cargo sizes and shapes



RSPL3 Spooler Attachment

Patented Multi-Carts change shape and length to carry huge amounts of equipment yet fold small for easy storage. Designed for professionals where speed and efficiency is crucial, these Multi-Carts can reduce time and effort moving equipment by up to 50%. Lightweight, rugged, affordable and ergonomically efficient.

Mfg. part no. **CART-R2** Micro Multi-Cart — frame expands from 26 to 39" in length with 25"/20" (front/rear) foldable sides. 6x1.5" rear wheels and 4x1" front swivel casters. Load capacity: 350 lbs.

Mfg. part no. **CART-R6** Mini Multi-Cart — frame telescopes from 28 to 42.5" in length with 24" foldable sides. 8x2.5" pneumatic rear wheels and 4x1" front swivel casters. Load capacity: 500 lbs.

Mfg. part no. **CART-R8** Mid Multi-Cart — frame telescopes from 34 to 52" in length with 32" foldable sides. 8x2.50" pneumatic rear wheels and 5x1.25" front swivel casters. Load capacity: 500 lbs.

Mfg. part no. **CART-R10** Max Multi-Cart — frame telescopes from 34 to 52" in length with 32" foldable sides. 10x3" pneumatic rear wheels and 5x1.25" front swivel casters. Load capacity: 500 lbs.

Mfg. part no. **CART-R12** All-Terrain Multi-Cart — frame telescopes from 34 to 52" in length with 32" foldable sides. 10x3" pneumatic rear wheels and 8x2.5" pneumatic front swivel casters. Load capacity: 500 lbs.

Mfg. part no. **RSPL3** Piggy Back Spooler attachment has three built-in adjustable bars for different spool sizes.

Mfg. Part No.	Description	Stock No.	Price Each
CART-R2	Micro Multi-Cart	63K4885	99.45
CART-R6	Mini Multi-Cart	63K4886	130.05
CART-R8	Mid Multi-Cart	63K4887	153.00
CART-R10	Max Multi-Cart	63K4883	175.95
CART-R12	All-Terrain Multi-Cart	63K4884	229.50
RSPL3	Spooler Attachment	75M0476	106.51

(89370)

BUCKETBAG TOOL CARRIER AND MECHANIC'S TOOL BAG



35-665



35-535

BucketBag tool carrier features 11 1/2 inch deep bag fits over rim of standard 5 gallon bucket. Rugged nylon polyester construction with 43 convenient pockets.

Mfg. Part No.	Stock No.	Price Each
		1-4
35-665	52F9078	58.39

The **mechanic's tool bag** has a large capacity, zippered main storage area. 8 interior pockets keep small tools easy to find. Two 10" x 4" exterior, snap-closure pockets hold larger tools or loose items.

35-535	48F1323	35.33
--------	-------------------------	-------

(34670)

8

TOOL CASES

TOOLS AND PARTS BAGS



35-665



35-655



35-533



35-535



35-402, 35-403

Mfg. part no. 35-665 BucketBag™ tool carrier fits perfectly over the rim of a standard five-gallon bucket. Has 43 pockets, 36 pleated outside pockets and seven inside pockets. Rugged nylon polyester construction. **Mfg. part no. 35-655** Divider Pouch™ small parts bag has six internally divided pockets, each 5" in depth. An outside drawstring closes the pouch. **Mfg. part no. 35-533** Tool Carrier™ natural canvas bag has 18 stitched, outer pockets. 12 pockets are 2 1/4 W x 5 7/8" D, six pockets are 4 3/4 W x 7 3/4" D. Velcro® closure. **Mfg. part no. 35-535** mechanic's tool bag has a large capacity, zippered main storage area. Eight interior pockets keep small tools in place and easy to find. Two 10" x 4" exterior, snap-closure pockets hold larger tools or loose items. **Mfg. part nos. 35-402** and **35-403** zippered pouches available in two lengths are constructed from a durable, water-resistant material and feature a heavy-duty, self-repairing zipper opening.

Mfg. Part No.	Description	Stock No.	Price Each
			1-4
35-665	BucketBag™ Tool Carrier	52F9078	58.39
35-655	Divider Pouch™	52F9079	25.38
35-533	Tool Carrier™ (Natural Canvas)	52F9080	62.50
35-535	Mechanic's Tool Bag	48F1323	35.33
35-402	Zipper Pouch — 10 1/2" L	23K9300	6.70
35-403	Zipper Pouch — 12 1/2" L	37J0483	14.03

(5789)

ZERUST® TRADESMAN™ TOTE



- Roomy rear zipper compartment with Zerust® panel and coated mesh pocket organizers
- Single hand clip action releases Tradesman™ case and access to large pocket

Newly added to Flambeau product line is Zerust®, an exclusive material which emits a harmless, odorless vapor which fills the inside of Zerust® tool storage line and forms a protective layer around metal objects during storage. Zerust® Tradesman™ tote provides universal storage and fit most commonly used hand and small power tools.

Mfg. Part No.	Description	Dimensions (in.) L x W x H	Stock No.	Price 1-49
6514ZR	Zerust® Tradesman™ Tote, Small	14 1/4 x 7 3/4 x 10 1/4	78M8087	26.13

Note: Product shown inside tote is not included. (106505)

TOOL STORAGE



22-8840



SG32890



SG32901



TL10511



22-8120



22-8125



TL10293

CANVAS TOOL BAG

Make your own tool kit with this deluxe tool case with two removable pallets. Comes with inside pouch for extra storage and outside pouch for storing documents. Includes shoulder strap. 15" (W) x 12" (H) x 3" (D).

STAINLESS STEEL TOOL BOX

Heavy-duty tool box with removable tote tray and soft grip carrying handle that provides extra comfort. Integral saw groove for resting workpieces on when cutting wood or pipes etc. Heavy duty metal latches and padlock eyes for extra security. Dimensions (HxWxD): 275x570x280mm.

3-IN-1 NESTING PLASTIC TOOL BOX SET

Robust plastic construction with separate locking systems for each box. Dimensions: (HxWxD) Small: 320 x 180 x 130mm, Medium: 395 x 223 x 165mm, Large: 500 x 250 x 255mm.

3-PIECE TOOL BOX SET

Keeps tools safe and secure in sturdy plastic tool boxes. Larger boxes have two hinged sorting compartments on top with transparent lids. Black body and handle and double clasps. Sizes: 450mm (18"), 400mm (16"), 300mm (12").

ALUMINUM TOOL CASE WITH ADJUSTABLE COMPARTMENTS

Made of lightweight durable aluminum and includes one tool holder with adjustable compartments for easily carrying hand tools, small soldering equipment, hand-held test equipment, and more. Color: Black. Dimensions: 19" x 14" x 6".

ALUMINUM TOOL CASE WITH FOAM INTERIOR

Heavy-duty case is made of lightweight aluminum and designed to take rough field use. Includes one tool pallet, egg carton foam lid, and 2" thick pre-cut foam bottom. Ideal for carrying fragile instruments and test equipment with accessories and small hand tools. Attractive black finish holds up after years of use. Measures approximately 19" x 14" x 6".

WATERPROOF TOOL BOX

Ideal for instruments, audio visual, photographic and test equipment. Provides maximum shock protection to contents. Is both waterproof and corrosion proof. Can be padlocked for additional security. Built in pressure valve. 515X435X225mm.

Mfg. Part No.	Description	Stock No.	Price Each
22-8840	Canvas Tool Bag	68K0531	12.95
TL10293	Stainless Steel Tool Box	97M9389	22.01
SG32890	3-in-1 Tool Box Set	01N3624	17.48
TL10511	3-Piece Tool Box Set	97M9423	12.29
22-8120	Aluminum Tool Case with Adjustable Dividers	05M5860	34.95
22-8125	Aluminum Tool Case with Foam Interior	97H3311	39.95
SG32901	Waterproof Tool Case	01N3625	26.28

(116785)



eQuotes

Retrieve and process Newark quotes online from our website under MY ACCOUNT eSuite. Or email them to your Purchasing department. Log in or register today.

(148836)

TOOL CASES

CLC BY PLATT SOFTSIDE TOOL BAG/ORGANIZERS



1165

1141



1161

1139

1168

CLC series softside, multi-pocket tool bag/organizers are made of durable 600d fabric with reinforced interior bottom panels and heavy-duty stitching at stress points. Color: tan and black combination. NOTE: Tools shown are not included.

Mfg. Part No.	Description	Dimensions L x W x H (in.)	Stock No.	Price Each
1161	23 Pockets - Tool Bag/Organizer	12 x 8½ x 8	89C0747	37.90
1165	22 Pockets - Tool Bag/Organizer	16 x 8½ x 10	89C0749	51.94
1139	14 Pockets - Tool Bag/Organizer with One Multi-Compartment Tray	15 x 9 x 12	89C0744	89.86
1141	37 Pockets - Tool Bag/Organizer with Two Multi-Compartment Trays	24 x 9 x 12	89C0745	106.19
1168	42 Pockets - Tool Bag/Organizer with Telescoping Handle and Wheels	18 x 10 x 14	89C0751	132.32

(72350)

MECHANIC'S TOOL BAGS



- Heavy-Duty Nylon Construction for Durability
- 8 Inside Pockets and 2 Pouches on the Outside Keep Smaller Tools and Parts Better Organized
- Water and Stain Resistant Exteriors
- Outside Dimensions: 12L x 6W x 6.5"D



Mfg. Part No.	Description	Stock No.	Price Each
MTB	Black	25C4142	33.78
MTB-BLU	Blue	16C1530	33.78
MTB-BURG	Burgundy	25C4143	33.78
MTB-GREEN	Green	25C4144	33.78

(68046)

ZIPPER-STYLE SOFT-SIDE TOOL CASES



Just Added

- Constructed of abrasion-, puncture- and tear-resistant nylon
- Ideal for service applications
- All cases come in popular black

Additional case sizes and styles are available; go online or call. NOTE: tools shown are not included.

Mfg. Part No.	Description	Exterior L x W x D (in.)	No. of Interior Tool Pockets	Stock No.	Price Each
660ZT	Trouble-Shooter Tool Case	13 x 10 x 2	29	87F3582	134.73
669ZT	Master Technician Tool Case	15½ x 11 x 2	47	66F1485	192.28
695ZT	Field Service Tech Tool Case	17½ x 10¼ x 6	39	22C7804	223.52

➔ CONTINUED ➔

ZIPPER-STYLE SOFT-SIDE TOOL CASES (CONT.)

Mfg. Part No.	Description	Exterior L x W x D (in.)	No. of Interior Tool Pockets	Stock No.	Price Each
688ZT	Double-Sided LAN Tool Case	17 x 12¼ x 5	59	97H1565	234.08
689ZT*	Combo Tool and Computer Attache Case	18 x 13 x 6	47	83F7706	204.16

*Contains padded computer pocket (5865)

TOOL CASES



Just Added



600T-CB

369TH-SGSH

410TH-SGSH

777TH-SGSH

- Mfg. part no. 600T-CB has durable ribbed outershell, molded handle, chrome-plated keylocks and two tool pallets
- Mfg. part no. 800T-CB has chemical-resistant shell, extruded aluminum frame, golf-grip handle, chrome-plated keylocks and two tool pallets
- Mfg. part no. 928T-CB has heavy-duty frame with gasket, golf-grip handle and two tool pallets
- Mfg. part no. 920TC-CB has durable ribbed shell, aluminum frame, cast key locks, golf-grip handle, piano hinge, molded adjustable bottom divider; one pocket and two tool pallets
- Mfg. part no. 369TH-SGSH is larger in size with recessed hardware, combo lock, telescoping handle, wheels and super-size tool pallets
- Mfg. part no. 777TH-SGSH has recessed hardware, combo lock, piano hinge, pocket in lid, tool pallets and two interior straps to hold contents in place
- Mfg. part no. 410TH-SGSH is stackable and has molded-in bumper system, key locking latches, piano hinge, combo lock

All cases come in popular black. Additional case sizes and styles are available; go online or call. NOTE: tools shown are not included.

Mfg. Part No.	Description	Material	Exterior L x W x D (in.)	Stock No.	Price Each
600T-CB	Standard Tool Case	Polyethylene	18 x 13 x 6	97B8318	208.21
800T-CB	Deluxe Tool Case	Polypropylene	18 x 13 x 6	87F3595	259.33
928T-CB	Deluxe Tool Case with Chrome Hardware	Polyethylene	18 x 13 x 8	87F3581	292.85
920TC-CB*	Deluxe Tool Case with Chrome Hardware	Polyethylene	18 x 13 x 9	97H1646	231.88
369TH-SGSH*	Super-Sized Tool Case with Wheels and Telescoping Handle	Polyethylene	17½ x 14½ x 9	83F7705	418.88
777TH-SGSH*	Guardman ATA Tool Case with Wheels and Telescoping Handle	Polyethylene	19 x 15 x 10	91F2013	1010.74
410TH-SGSH	Rotational Molded Tool Case with Wheels and Telescoping Handle	Polyethylene	19½ x 17¼ x 12½	97H1495	483.12

*Contains built-in TSA lock to protect contents when traveling (5864)

Expert technical support

Chat online to our team of engineers, or connect to them through your representative.

(148838)

TOOL CASES • STORAGE PRODUCTS

ALL-PURPOSE EQUIPMENT CASES

Just Added



ABS



Polyethylene

ABS Cases:

- Scuff-resistant molded ABS thermoplastic shell
- Extruded aluminum rim, keylocks, and strong handle

Polyethylene Cases:

- Impact-resistant HMW Polyethylene shell
- Heavy-duty aluminum valance
- Cast chrome keylocks
- Golf-grip handle

All cases are filled with layers of cubed foam and a flat cushion in the bottom and convoluted and/or flat cushion in the lid. Ideal for transporting and displaying of delicate items. Perfect for medical or audiovisual equipment. All cases come in popular black. Additional case sizes and styles are available; go online or call.

Mfg. Part No.	Material	Interior L x W x D (in.)	Body Depth (in.)	Stock No.	Price Each
1410*	ABS	10 x 7 x 5	3	97F9760	83.49
1412*	ABS	12 x 8 x 5	3	87F3584	104.37
1416*	ABS	16 x 12 x 5	3	87F3585	123.98
1419*	ABS	18 x 13 x 5	3	94F7677	92.84
1425**	ABS	18 x 13 x 7	4	87F3586	172.04
2007**	ABS	20 x 14 x 7	4	93B3140	158.40
2207**	ABS	22 x 16 x 7	4	91B6432	185.24
201407	Polyethylene	20 x 14 x 7	4	90F1642	284.63
221609	Polyethylene	22 x 16 x 9	5	87F3589	341.55
241809	Polyethylene	24 x 18 x 9	5	90B5719	334.32
282007	Polyethylene	28 x 20 x 7	4	97F9762	411.13

*Light-duty valance; **Medium-duty valance (5586)

ATA CASES WITH WHEELS AND TELESCOPING HANDLE



Just Added

- Heavy-duty cases with recessed hardware
- Impact-resistant polyethylene exterior shell
- Equipped with built-in TSA lock to protect contents when traveling
- Wheels and telescoping handle for easy transport
- All cases come in popular black

Features heavy-duty aluminum rim and gasket, built-in TSA lock, full-length piano hinge and spring-loaded handle. All cases are filled with layers of cubed foam and a flat cushion in the bottom and convoluted and/or flat cushion in the lid. Additional case sizes and styles are available; go online or call.

Mfg. Part No.	Interior L x W x D (in.)	Body Depth (in.)	Stock No.	Price Each
221609AH	21½ x 15½ x 9	5	01C1033	519.12
282011AH	27½ x 19½ x 11	5½	92B5912	613.20
241811AH	23¾ x 17¾ x 11	5½	94B9818	567.84
242420AH	24 x 24 x 20	15	63K7082	740.96
322211AH	31¾ x 22 x 11	5½	98B2916	534.60

(55071)

ZERUST® DRY BOX



- Full perimeter O-ring provides a water resistant seal
- Molded in Zerust® corrosion protection
- Twin top storage compartments with easy access lids
- Full perimeter tongue-and-groove construction adds strength
- Over molded handle provides a non-slip comfortable grip
- Spacious lift-out tray
- Cam-over snap tight latch
- Molded in lock tab

Zerust® corrosion inhibitor emits a harmless, odorless vapor that fills the inside of the storage product and forms a protective layer around metal objects during storage. High-impact, copolymer construction is dent-proof, rust-proof, non-conductive and resists most common chemicals. The tongue-and-groove design keeps water out while adding strength.

Mfg. Part No.	Description	Dimensions (in.) L x W x H	Stock No.	Price 1-49
6417ZR	Zerust® Dry Box, with Lift-Out Tray	17 x 10 x 10 1/5	78M8086	30.35

(105607)

PELICAN PROTECTOR WATERTIGHT EQUIPMENT CASES

Just Added



1400



1440



1630

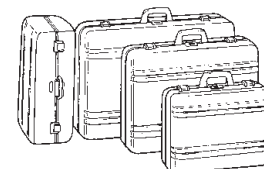
- Watertight and airtight to 30' for ultimate in protection
- Lightweight, space-age structural resin construction
- Open cell core with solid wall design
- Neoprene O-ring seal and automatic pressure equalization valve
- Easy-open double-throw latches
- All cases come in popular black
- Manufacturer's unconditional lifetime guarantee of excellence

These watertight, crushproof and dustproof equipment cases feature prescored Pick 'N' Pluck™ (no cutting required) with convoluted lid foam, locking flanges, and a comfortable molded fold-down handle. Additional case sizes and styles are available; go online or call.

Mfg. Part No.	Interior L x W x D (in.)	Stock No.	Price Each	
			1-2	
1150	8.18 x 5.68 x 3.62	72C6083		57.73
1200	9.25 x 7.12 x 4.12	31C6224		80.56
1300	9.87 x 7 x 6.12	66H7558		79.15
1400	11.81 x 8.87 x 5.18	17C7223		165.57
1440*	17.1 x 7.5 x 16	08R0898		261.84
1450	14.62 x 10.18 x 6	93B7541		193.72
1500	16.75 x 11.18 x 6.12	25C4185		193.67
1510*	19.75 x 11 x 7.6	46M4324		244.94
1520	18.06 x 12.89 x 6.72	08C3778		245.22
1550	18.43 x 14 x 7.62	25C4186		291.22
1600	21.43 x 16.5 x 7.87	97B9396		335.94
1620*	21.37 x 16.31 x 12.56	57H7190		358.98
1630**	27.7 x 20.98 x 15.5	46M4023		425.52
1650*	28.5 x 17.4 x 10.5	25C4188		502.82
1660*	28.18 x 19.75 x 17.62	87K3079		453.85

*Has wheels and retractable handle; **Has wheels (68047)

ZERO CENTURION® ELITE CARRYING CASES



- Lightweight, Yet Durable, Heat-Treated Aluminum Exterior
- High-Strength, Injection-Molded Handle and Aluminum Feet
- Triple-Digit Combination Lock with High-Quality Latches
- Foam Cushion Inserts and Panel Support Brackets Available

ZERO Centurion® Elite carrying cases feature high-strength, lightweight aluminum shells with styling ribs for increased structural integrity. Positive seat, ball-type, chrome-plated latches. Continuous aluminum stainless steel pin hinges. Silver/clear anodized aluminum heat-treated case shell. Double-band design characterizes the ZERO Centurion® Elite case. Textured black powder paint finish also available; contact your local Newark sales office. Order foam cushion insert sets and internal panel mounting bracket separately; go online or call.

Mfg. Part No.	H x W x L	Material Thickness	Weight	Stock No.	Price Each	
					1-2	
100X-SI	9.00 x 5.00 x 12.00"	0.040"	3.3 lbs.	85F027		216.51
101X-SI	9.00 x 7.75 x 16.00"	0.051"	5.0 lbs.	85F028		300.36
103X-SI	13.00 x 6.00 x 18.00"	0.040"	5.4 lbs.	85F026		266.95
106X-SI	17.00 x 7.50 x 21.00"	0.051"	8.4 lbs.	85F030		384.08
110X-SI	18.00 x 9.00 x 26.00"	0.051"	10.8 lbs.	85F032		436.20
129X-SI	20.00 x 9.94 x 29.00"	0.051"	13.8 lbs.	85F031		488.82

(148836)

Huge Expanded Selection of Semiconductors

Go online to find new technologies and proven solutions from world-class and specialist suppliers.