

Lamps

	Page		Page
Compact Fluorescent Lamps	2981	LED Lamps	2984
Fluorescent Tubes	2983	Low Voltage Tungsten Halogen Lamps	2985
Insect/Germicidal Lamps	2987	Mains Voltage Tungsten Halogen Lamps.....	2986
Lampholders & Starters	2987	Metal Halide Lamps	2987

Compact Fluorescent Lamps

Energy Saving Lamps



- Ideal as direct replacements for GLS mains voltage lamps
- Rapid start up (between 0.5 and 1 sec)
- 8,000 hours average life
- Suitable for indoor and enclosed outdoor light fittings
- Colour Temperature: 2700k (Warm White)
- Diameter: 41mm

Not suitable for use with with dimmers, photocells or timer devices

493072.446538

Watts	GLS		Order Code	Price Each	
	Equiv.	Length		1+	5+
BC Fitting					
9W	40W	145mm	139-9570		
11W	60W	155mm	139-9571		
15W	75W	165mm	139-9572		
18W	100W	175mm	139-9575		
ES Fitting					
9W	40W	145mm	139-9576		
11W	60W	155mm	139-9577		
15W	75W	165mm	139-9578		
18W	100W	175mm	139-9579		

Energy Saving Candle Lamps



- Ideal as direct replacements for GLS mains voltage candle lamps
- Rapid start up (between 0.5 and 1 sec)
- 8,000 hours average life
- Suitable for indoor and enclosed outdoor light fittings
- Colour Temperature: 2700k (Warm White)
- Diameter: 42mm

Not suitable for use with with dimmers, photocells or timer devices

446540.523814

Watts	GLS		Order Code	Price Each	
	Equiv.	Length		1+	5+
SBC Fitting					
3W	20W	120mm	139-9582		
7W	40W	130mm	139-9590		
SES Fitting					
3W	20W	120mm	139-9583		
5W	30W	120mm	139-9587		
7W	40W	130mm	139-9591		
BC Fitting					
5W	30W	120mm	139-9584		
7W	40W	130mm	139-9588		
11W	60W	130mm	139-9592		
ES Fitting					
3W	20W	120mm	139-9581		
5W	30W	120mm	139-9586		
7W	40W	130mm	139-9589		
11W	60W	130mm	139-9593		

Mini Energy Saving Lamps



- Ideal as direct replacements for GLS mains voltage lamps
- Rapid start up (between 0.5 and 1 sec)
- 8,000 hours average life
- Suitable for indoor and enclosed outdoor light fittings
- Colour Temperature: 2700k (Warm White)
- Diameter: 40mm

Not suitable for use with with dimmers, photocells or timer devices

446542.523815

Watts	GLS		Order Code	Price Each	
	Equiv.	Length		1+	5+
SES Fitting					
5W	25W	124mm	139-9594		
BC Fitting					
8W	40W	112mm	139-9599		
11W	60W	122mm	139-9600		
14W	75W	132mm	139-9601		
ES Fitting					
8W	40W	112mm	139-9595		
11W	60W	122mm	139-9596		
14W	75W	132mm	139-9598		

Energy Saving Globe Lamps



- Ideal as direct replacements for GLS mains voltage lamps
- Rapid start up (between 0.5 and 1 sec)
- 8,000 hours average life
- Suitable for domestic and workplace applications
- Colour Temperature: 2700k (Warm White)
- Diameter: 110mm

Not suitable for use with with dimmers, photocells or timer devices

446544.523818

Watts	GLS		Order Code	Price Each	
	Equiv.	Length		1+	5+
BC Fitting					
20W	100W	168mm	139-9602		
24W	120W	178mm	139-9605		
ES Fitting					
20W	100W	168mm	139-9606		
24W	120W	178mm	139-9607		

Mini Spiral Compact Fluorescent Lamps



- Energy saving replacements for GLS mains voltage lamps
- Smaller size for more discreet applications
- Rapid start up (between 0.5 and 1 sec)
- 8,000 hours average life
- Suitable for indoor and enclosed outdoor light fittings
- Colour Temperature: 2700k (Warm White)
- Voltage: 220-240V

Not suitable for use with with dimmers, photocells or timer devices

465056.523819

Watts	GLS		Order Code	Price Each	
	Equiv.	Dims. (LxDia) mm		1+	5+
BC Fitting					
7W	35W	87 x 32	139-9608		
9W	45W	110 x 32	139-9610		
ES Fitting					
7W	35W	87 x 32	139-9609		
9W	45W	110 x 32	139-9611		

Spiral Compact Fluorescent Lamps



- Energy saving replacements for GLS mains voltage lamps
- Rapid start up (between 0.5 and 1 sec)
- 8,000 hours average life
- Suitable for indoor and enclosed outdoor light fittings
- Colour Temperature: 2700k (Warm White)
- Voltage: 220-240V

Not suitable for use with dimmers, photocells or timer devices

Compact Fluorescent Lamps - continued

Spiral Compact Fluorescent Lamps - continued

Watts	GLS Equiv.	Dims. (LxDia) mm	Order Code	Price Each	
				1+	5+
465057.523820					
BC Fitting					
11W	55W	113 x 42	139-9612		
15W	75W	128 x 42	139-9614		
20W	100W	138 x 52	139-9617		
25W	125W	155 x 53	139-9619		
ES Fitting					
7W	55W	87 x 32	139-9609		
11W	55W	113 x 42	139-9613		
15W	75W	128 x 42	139-9616		
20W	100W	138 x 52	139-9618		
25W	125W	155 x 53	139-9620		

Compact Fluorescent Lamps



- For use as a direct replacement for candle or GLS mains voltage
- High luminous intensity (white light)
- Average life 8000 hours
- Typical emission colour: 2700k
- Low running temperature
- Helical tube design gives an even 360° light output

Non Dimmable

Watts	Dims. (HxDia)	Order Code	Price Each	
			1+	+
419717.341116.387036				
BC Fitting				
15W	10838mm x	110-2589		
ES Fitting				
15W	10838mm x	110-2591		
18W	11338mm x	110-2593		

Low Energy Daylight Lamps



- Spiral compact fluorescent lamps for use as direct replacements for GLS mains voltage lamps
- Produces a quality of light very close to natural daylight
- 8,000 hours average life
- Even 360° distribution of light
- Suitable for indoor and enclosed outdoor light fittings
- Integral rapid start electronic circuit
- Colour Temperature: 6400k

Watts	GLS Equiv.	L x Dia. (mm)	Order Code	Price Each		
				1+	5+	10+
450173.436476						
BC Fitting						
11W	60W	101 x 42	129-8299			
20W	75W	108 x 45	129-8300			
18W	100W	113 x 45	129-8301			
25W	125W	115 x 45	129-8302			
30W	150W	170 x 55	129-8303			
ES Fitting						
11W	60W	101 x 42	129-8304			
15W	75W	108 x 45	129-8305			
18W	100W	113 x 45	129-8307			
25W	125W	115 x 45	129-8308			
30W	150W	170 x 55	129-8309			

Low Energy Reflector Lamps



- 8,000 hours average life
- Up to 80% energy saving over standard equivalent
- Compact fluorescent reflector lamps
- Ideal for replacing standard reflector and GLS lamps

450177

Watts	GLS Equiv.	L x Dia. (mm)	Order Code	Price Each		
				1+	5+	10+
R50 - SES						
4W	20W	95 x 50	129-8322			
R63 - ES						
7W	40W	125 x 63	129-8324			
R80 - ES						
11W	60W	130 x 80	129-8325			

Low Energy GU10 Lamps



- Low energy fluorescent lamps designed to be a like for like fit to existing mains halogen lamps
- Mains voltage GU10 fittings
- 8,000 hours average life
- 70% reduction in heat output, 70% saving in energy consumption and up to 90% decrease in UV output
- Diameter: 50mm

450176.436457

Watts	GLS Equiv.	Length (mm)	Order Code	Price Each		
				1+	5+	10+
Warm White - 2700k						
7W	40W	55	129-8314			
9W	50W	75	129-8315			
11W	60W	75	129-8316			
Cool White - 4000k						
7W	40W	55	129-8317			
9W	50W	75	129-8319			
11W	60W	75	129-8321			

Blacklight Fluorescent Lamps



- Ultra compact blacklight blue light source
- 8000 hours life
- 25W output
- Available in Bayonet & Edison fitting
- Woods glass tube maximum UV output
- Integral electronics, no external control gear needed

419720.342172

Fitting	Order Code	Price Each	
		1+	5+
BC	110-2599		
ES	110-2600		

Double D Lamps



- Low energy, long life lamps for domestic and commercial applications
- For use with indoor and outdoor bulkheads
- High light output
- 2 pin and 4 pin versions
- 10,000 hours average lamp life
- Popular white finish
- 3500K colour temperature
- Compatible with all current control gear

448344.424955

Wattage	Lumens	L x W (mm)	Order Code	Price Each	
				1+	5+
2 Pin - GR8 Cap					
16W	1050lm	132 x 132	128-5090		
28W	2250lm	196 x 196	128-5091		
38W	3000lm	198 x 198	128-5092		
4 Pin - GR10q Cap					
16W	1050lm	132 x 132	128-5093		
28W	2250lm	196 x 196	128-5094		
38W	3000lm	198 x 198	128-5095		

The first online technical portal for design engineers
Log on, research, refine and design

CFL Square Lamps



- Low-profile compact fluorescent lamps
- Ideal for indoor and outdoor luminaires
- Uniform distribution of light
- 2 pin and 4 pin versions
- 10,000 hours average lamp life
- Dimensions:
- 16W (LxW): 141 x 138mm
- 28W/38W (LxW): 207 x 205mm

OSRAM

Mfrs.	Wattage	Colour	Length (inc. base)	Order Code	Price Each
DT1382	13	Interna	113	317-8031	1+ 10+ 30+
DT1884	18	Cool White	123	152-8675	
DT1882	18	Interna	123	317-8055	
DT2684	26	Cool White	138	152-8676	

480186

Wattage	Colour Temp.	Lumens	Order Code	Price Each
2 Pin - GR8 Cap				
16W	2700K	1050lm	143-5727	
4 Pin - GR10q Cap				
28W	3500K	2050lm	143-5730	
38W	2700K	2700lm	143-5731	
38W	3500K	2700lm	143-5732	

Circular Fluorescent Tube



- Circular fluorescent lamp
- 22W cool white with G10 base
- Suitable replacement for Inspection/Magnifier luminaire
- High energy efficiency with long life
- Diameter 29mm

OSRAM

Dulux™ D/E For HF and Dimming Systems



- A compact double turn lamp without integral starter
- The four pin G24q base allows operation from normal electronic and dimmable electronic control gear
- Small size and symmetrical luminous distribution make these lamps ideal for compact, low profile luminaires

211945

Mfrs.	Wattage	Colour	Length (inc. base)	Order Code	Price Each
DDE134	13W	Cool White	131	152-8664	1+ 10+ 30+
DDE264	26W	Cool White	165	152-8666	

Mfrs.	List No.	Order Code	Price Each
	CI2220	152-8748	1+ 5+

211912

Dulux™ S and D Lamps



- Five times higher efficiency
- Longer lifespan (typically 8 times longer)
- Reduced maintenance costs

Available in two colour correlated temperatures 2700K warm (similar to tungsten filament) and 4000K cool (similar to standard fluorescent).

D Lamp L = 118 (10W), 153 (13W), W = 34, D = 34
S Lamp L = 108 (5W), 138 (7W), 168 (9W), 238 (11W) W = 34, D = 19.5

Comparison of light outputs

Supply Voltage	S Lamps	Average Lamp Life	D Lamps
5W	=250 lm = 25W	8000 hours	=600 lm = 60W
7W	=400 lm = 40W		
9W	=600 lm = 60W	8000 hours	=900 lm = 75W
11W	=900 lm = 75W		

220 to 240V ac 50Hz (using suitable ballast circuit)

OSRAM

Dulux™ L Lumilux



- Designed to replace conventional tubes in modern 600x600mm modular luminaires
- Four pin base requires the use of an external starter for operation on conventional control gear
- Suitable for operation on HF electronic control gear and for dimming systems
- Offers very good colour rendering

211947

Mfrs.	Wattage	Colour	Length	Order Code	Price Each
DL1884	18W	Cool White	217	317-7762	1+ 10+ 30+
DL1882	18W	Interna	217	152-8654	
DL2484	24W	Cool White	317	152-8655	
DL3684	36W	Cool White	411	152-8657	
DL3682	36W	Interna	411	152-8659	
DL5584	55W	Cool White	533	152-8662	

Fluorescent Tubes

T8 Lumilux Plus Eco Fluorescent Tubes

OSRAM



- Reduced mercury content over other tubes
- Exceptionally high lumen output
- High efficacy with good colour rendering
- Use with Osram Quicktronic professional electronic control gear
- Available in three colour temperatures
- 26mm diameter
- G13 base

Wattage	(feet)	(pins)	Colour	List No.	Order Code
18	2600	600	Warm White	L18830	152-8629
18	2600	600	Cool White	L18840	152-8630
18	2600	600	White	L18835	152-8631
36	41200	1200	Cool White	L36840	152-8633
36	41200	1200	White	L36835	152-8635
58	51500	1500	Warm White	L58830	152-8636
58	51500	1500	Cool White	L58840	152-8637
58	51500	1500	White	L58835	152-8638
70	61800	1800	White	L70835	152-8640

Dulux™ T



- Directly interchangeable with equivalent wattage Osram Dulux D
- The new triple turn technology reduces the length to 2/3 of the equivalent Osram D
- Complete with integral starter and RF suppression capacitor, these lamps are for use with conventional control gear
- Ideal for compact luminaires and downlights

OSRAM

211919

Fluorescent Tubes - continued

T8 Lumilux Plus Eco Fluorescent Tubes - continued

Mftrs.	Order Code	Price Each	10+	50+
L18830	152-8629			
L18840	152-8630			
L18835	152-8631			
L36840	152-8633			
L36835	152-8635			
L58830	152-8636			
L58840	152-8637			
L58835	152-8638			
L70835	152-8640			

211905.387055

T8 Triphosphor Coated Fluorescent Tubes Master TL-D Super 80

PHILIPS



- A range of fully recyclable fluorescent tubes in varying colour temperatures
- Highly efficient 3-band fluorescent coating in combination with New Generation pre-coating technology
- 17500 hours average life on high frequency gear, 12000 hours on switch start
- High initial lumen output
- G13 fitting
- Diameter: 26mm
- Voltage: 240V
- Supplied in packs of 25

450634

Colour Temp.	Colour	Order Code	1+	4+	8+
18W - 600mm					
3500K	White	130-3462			
4000K	Cool White	130-3463			
6500K	Cool White	130-3464			
36W - 1200mm					
3500K	White	130-3470			
4000K	Cool White	130-3471			
6500K	Cool White	130-3472			
58W - 1500mm					
3500K	White	130-3475			
4000K	Cool White	130-3476			
6500K	Cool White	130-3477			
70W - 1800mm					
3500K	White	130-3481			
4000K	Cool White	130-3482			

Shatter Resistant T8 Fluorescent Safety Lamps

GLASSGUARD
RECYCLABLE



- Polymer coating contains the glass and chemical debris for quick, easy and safe disposal
- Prevents widespread glass contamination from accidental lamp breakage
- Impact tested to IEC60068-2-75 (5 joules) 6m
- FEP shatterproof coating outperforms lamp life
- Passes all food hygiene audits including the B.R.C.
- Operational in both open and enclosed IP65 fittings
- Coating will not discolour or degrade
- Superior colour rendering
- W = White (835), CW = Cool White (840)
- Service life:
 - - Standard: 15-20,000 hours
 - - Long Life: 50,000 hours

NB. These are branded lamps with a Glass Guard FEP coating

435908.435897

Length	Watts	Colour	Order Code	1+	10+
Standard					
450mm	15W	W	410-5217		
600mm	18W	W	410-5229		
900mm	30W	W	410-5230		
1.5m	58W	W	410-5254		
600mm	18W	CW	117-7931		
1.2m	36W	CW	117-7933		
1.8m	70W	CW	117-7936		
Long Life					
600mm	18W	CW	117-7937		
1.2m	36W	CW	117-7938		

T5 Plus High Efficiency Fluorescent Tubes

OSRAM



- Superior colour rendering from T5 tubes
- New generation of high efficiency tubes
- Includes triphosphor technology for superior lumen maintenance
- 16mm diameter
- G5 base

Wattage	Length	Colour	Order Code
14W	550	Cool White	317-8869

211906.387057

Mftrs.	Order Code	Price Each	10+	50+
FH1484	317-8869			

T5 - Triphosphor Coated

SYLVANIA



- T5 FHE/FHO lamps
- Average rated life of 16,000 hours
- Warm white and cool white deluxe triphosphor coatings
- FHE versions (Fluorescent High Efficiency) for use where efficient direct lighting in low profile luminaires is required
- FHO versions (Fluorescent High Output) for use when a higher output is required
- G5 fitting
- 16mm diameter

334027

Wattage	Colour	Length mm	Order Code	1+	25+	50+
FHE						
35W	Cool White	1450	471-8045			
FHO						
24W	Cool White	550	471-8069			
49W	Cool White	1450	471-8100			

Miniature T5

SYLVANIA



- Miniature fluorescent tubes commonly used in display cabinets, effects lighting, vending and amusement machines
- G5 fitting
- 3500K white colour temperature
- 16mm tube diameter

334026.262230

Wattage	Length	Order Code	1+	25+
4W	150	471-7934		
6W	225	471-7946		
8W	300	471-7958		
13W	525	471-7960		

LED Lamps

MR16 LED Lamp



- Ideal for point-focal or decorative illumination
- Long-life with low-heat development
- Can easily be set in halogen sockets

Voltage	12V
Wattage	2W
Base	GX5.3 / GU5.3
Average Life (Hours)	50000
Dimensions (HxDia)	35mm x 50mm
Weight	36g

419721

Colour	No. of LEDs	Lumens	Order Code	Price Each
White	20	20	110-2605	

12V MR16 LED Lamps



- Ideal replacements for low voltage halogen lamps
- Longer life with low heat and low power consumption
- 50,000 hours average life
- Closed front
- Colour: White

Technical Data
Voltage 12V
Base GX5.3 / GU5.3
Average Life (Hours) 50000
Dimensions (HxDia) 40 x 50mm

465058.523821

No. of LEDs	Wattage	Order Code	Price Each	
			1+	5+
15	1.0-1.5W	146-6118		
20	1.5-2.0W	146-6119		

GU10 DioTronic LED Lamps



- Ultra long life up to 30,000 hours
- Available with various coloured LEDs
- Low power (1.8 to 2W) consumption
- 15x ultra bright LEDs
- Closed front
- Ideal replacement for PAR16 HI SPOT ES50 with its GU10/GZ10 direct retrofit

419719.342171

Colour	Order Code	Price Each	
		1+	5+
Blue	110-2594		
Red	110-2597		
White	110-2598		

Dio-Tronic GU10 LED Lamps



- Single source, high power LED lamps, ideal for display and effect lighting
- Rich colour performance
- Outstanding long life - 50,000 hours
- Optical quality lenses of glass and acrylic
- Mains voltage GU10 fittings
- Beam angle: 35°
- Dimensions (LxDia): 58 x 51mm

450179.436469

Watts	Order Code	Price Each			
		1+	5+	10+	20+
White					
3W	129-8327				
Warm White					
3W	129-8330				

Oven Lamps



Oven Lamps



- Clear glass filament lamps for ovens and other hot environments
- 1000 hours average life
- SES fitting
- Temperature rating: 300°C
- Voltage: 240V

450579

Watts	Size (Dia x L)	Order Code	Price Each		
			1+	5+	10+
15W	22 x 50mm	130-3402			
25W	25 x 55mm	130-3403			
40W	45 x 75mm	130-3404			

Cooker Hood Lamp



- Clear glass filament lamps designed specifically for cooker hoods
- Vibration proof
- 1000 hours average life
- SES fitting
- Dimensions (Dia x L): 25 x 82mm
- Voltage: 230/250V

450580

Order Code	Price Each			
	1+	5+	10+	25+
130-3406				

Infra-Red Heat Lamps



Hard Blown (R125)

Hard Pressed (PAR38)

- Infra-red tungsten filament heat lamps in both R125 and PAR38 styles
- 5000 hours average life
- **Hard Blown** version (R125) resistent to thermal shocks, such as water splashes, making it suitable for industrial applications
- **Hard Pressed** versions have a high-efficiency reflector and refractor lens design, allowing accurate heat direction to where it is needed
- ES fitting
- Voltage: 240V / 250V

450602

Type	Watts	Mfrs. List No.	Order Code	Price Each		
				1+	10+	50+
Hard Blown	250W	12649825	130-3431			
Hard Pressed	100W	12893520	130-3432			
Hard Pressed	175W	12895920	130-3433			

Low Voltage Tungsten Halogen Lamps

50mm Low Voltage Halogen Lamps



- Closed face halogen lamps for low voltage applications
- 3000 hours average life
- Dichroic reflector and clear lens
- GU5.3 fitting
- Diameter: 50mm
- Voltage: 12V

450591

Watts	Beam Angle	Order Code	Price Each		
			1+	10+	25+
20W	10° (Spot)	130-3421			
20W	36° (Flood)	130-3422			
35W	10° (Spot)	130-3423			
35W	36° (Flood)	130-3424			
50W	10° (Spot)	130-3425			
50W	36° (Flood)	130-3426			

35mm Low Voltage Halogen

M11 Decostar 35S



Dia=35mm, L=37.

- Integral glass front cover maintains the brilliance of the dichroic reflector whilst protecting it from dust and humidity
- Produces high light output with uniform illumination
- Incorporates special UV absorbing quartz bulbs meeting the latest standards
- Suitable for operation in open luminaires
- Average life 2000 hours
- GU4 base

211948

Mfrs. List No.	Watts	Lamp Reference	Order Code	Price Each		
				1+	10+	30+
M200	10W wide flood	44888 WFL	152-8681			
M252	20W spot	44890 SP	152-8682			
M221	20W wide flood	44890 WFL	152-8684			

Low Voltage Tungsten Halogen Lamps - continued

Long Life Low Voltage Halogen Capsule Lamps

PRO-LITE



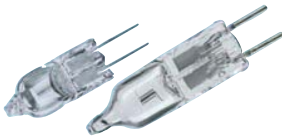
- Single-ended, low voltage (12V) capsule lamps
- Xenon filled for extended life
- 8,000 hours average life
- Can be operated in any position
- Low-pressure, ideally suited for use in open luminaires
- UV stop
- Space between pins: G4 = 4mm, GY6.35 = 6.35mm

448346.436502

Watts	Order Code	Price Each	
		1+	5+
G4 Fitting			
10W	128-5100		
20W	128-5101		
GY6.35 Fitting			
35W	128-5102		
50W	128-5103		

Low Voltage Halogen Capsule Lamps CAPSULEline Pro

PHILIPS



- Single-ended low voltage halogen capsule lamps, giving crisp white halogen light of professional quality
- Ideal for task lighting and decorative applications in homes, shops, hotels and restaurants
- 3000 hours average life
- Suitable for use in open luminaires
- Low pressure standard with UV-Block glass

450610

Voltage	Watts	LIF Code	Order Code	Price Each			
				1+	5+	10+	25+
G4 Fitting							
12V	10W	M91	130-3434				
12V	20W	M86	130-3435				
24V	20W	M88	130-3436				
GY6.35 Fitting							
12V	20W	M76	130-3437				
12V	35W	M75	130-3438				
12V	50W	M74	130-3439				
12V	75W	M73	130-3440				
12V	100W	M180	130-3441				
24V	50W	M89	130-3443				
24V	100W	M90	130-3444				

Projection Lamps

PHILIPS



- A range of dichroic and capsule lamps for conventional and overhead projection
- Precision built for tight optical control

450625

Voltage	Watts	Cap	LIF Code	Order Code	Price Each		
					1+	5+	10+
Dichroic 50mm							
12V	W75	GZ6.35	A1230	130-3446			
12V	W100	GZ6.35	A1231	130-3447			
15V	W150	GZ6.35	A1232	130-3449			
24V	W250	GX5.3	A1259	130-3450			
Capsule							
12V	W50	G6.35	A1220	130-3452			
12V	W100	G6.35	A1215	130-3453			
15V	W150	GY6.35	A1234	130-3455			
24V	W150	GY6.35	A1216	130-3456			
36V	W400	GY6.35	A1239	130-3458			
230V	W500	GY9.5	A1244	130-3459			



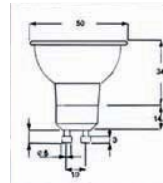
TROUBLESHOOTING TIPS

Chat online to one of our technical engineers at farnell.com

Mains Voltage Tungsten Halogen Lamps

GU10 Halogen Lamps

PRO-LITE



- Aluminised reflector lamp PAR16 with GU10 base
- Tempered glass front cover
- 2000 Hours average life
- Beam Angle: 36° (Flood)
- Voltage: 240V

450194.342164

Watts	Order Code	Price Each		
		1+	5+	20+
20W	129-8366			
35W	129-8368			
50W	129-8369			

GU10/GZ10 Halogen Lamps

PHILIPS



- Enclosed front halogen lamps for precision and decorative lighting
- 2000 hours average life
- Available as either GZ10 Dichroic reflector or GU10 Aluminium reflector
- Diameter: 50mm
- Wattage: 50W
- Voltage: 240V

450589

Fitting	Beam Angle	Order Code	Price Each		
			1+	10+	25+
GZ10	30° (Spot)	130-3416			
GZ10	(Flood)	130-3418			
GU10	(Spot)	130-3419			
GU10	(Flood)	130-3420			

GU10 Xenon Lamps

PRO-LITE



- Ideal for areas where low maintenance is essential
- Mains voltage GU10 fittings
- 5,000 hours average life
- Low pressure UV stop
- Aluminised reflector
- Clear enclosed front
- Beam Angle: 25° (Flood)
- Dimensions (LxDia): 50 x 50mm

448345.436490

Watts	Order Code	Price Each	
		1+	5+
20W	128-5096		
35W	128-5097		
50W	128-5098		

Hi-Spot

Mains Voltage Tungsten Halogen

SYLVANIA



- Very high quality range of 240V mains halogen lamps
- Brilliant light without the need of a transformer
- Compact size
- Long life (between 1500-3000 hours depending on size)
- Available in GU10, GZ10, E14 and E27

334025

Wattage	Base	Beam °	Diameter x Length	Life h	Order Code	Price Each		
						1+	10+	30+
35W	GU10	-	50x	2500	471-7685			
50W	GU10	-	51x	2500	471-7697			
50W	GU10	-	51x	2500	471-7703			
75W	GU10	-	64x	2500	471-7740			
75W	GU10	-	64x	2500	471-7752			
25W	E14	25	50x	1500	471-7776			
40W	E14	25	50x	2000	471-7788			
50W	E27	10	63x	2500	471-7790			
50W	E27	25	63x	2500	471-7806			
50W	E27	25	80x	2500	471-7820			
75W	E27	25	80x	3000	471-7843			
75W	E27	30	95x	3000	471-7867			
100W	E27	30	95x	3000	471-7880			
100W	E27	30	120x	3000	471-7922			

G9 Halogen Capsule Lamps



- Single-ended, twin fused halogen capsule lamps
- 8,000 hours average life
- G9 fitting
- UV stop
- Available in clear or frosted finish

448347.436504

Watts	Order Code	Price Each	
		1+	5+
Clear			
25W	128-5104		
40W	128-5106		
Frosted			
25W	128-5109		
40W	128-5110		

Halopin® G9 Halogen Capsule Lamps

OSRAM



- Suitable for use in open luminaires
- Integral safety fuse
- 2,000 hours average life
- Robust filament support thanks to bulb-pinch technology
- Complies with the strictest UV protection thresholds
- G9 fitting
- Dimmable

450187.343809.387041

Watts	Order Code	Price Each		
		1+	5+	10+
Clear				
40W	152-8593			
60W	152-8595			
75W	129-8349			
Frosted				
25W	129-8344			
40W	152-8594			

Double-Ended Halogen Lamps



- Rough service linear tungsten halogen lamps
- Ideal for use in rough-service applications, interior uplights and external floodlights
- 2,000 hours average life
- Triple support

450193.436505

Length	Watts	Order Code	Price Each			
			1+	5+	10+	20+
240V						
80mm	100W	129-8351				
80mm	150W	129-8352				
80mm	200W	129-8353				
80mm	250W	129-8354				
118mm	200W	129-8356				
118mm	300W	129-8357				
118mm	500W	129-8358				
110V						
118mm	300W	129-8362				
118mm	500W	129-8363				

Insect/Germicidal Lamps

Germicidal Safety Lamps

Shatterproof



- Destroys bacteria, germs and other potentially damaging biological organisms
- Not suitable for use in food preparation areas
- Made from F.E.P no toxic UV retardants
- Less than 5% light loss through coating
- FDA approved in compliance with **21 CFR 177.1550**
- Resistant to heat and fire to **IEC 60695-2-1/0, 168 hours**

Working temperature -25°C to 50°C
 Max operating temperature 20,000 hours at 180°C
 Melting point 260°C

422725

Germicidal Lamps	Mfrs. List No.	Order Code	Price Each		
			1+	10+	25+
8W 305mm	8TUV/S 240V	410-5357			
15W 457mm	15TUV/S 240V	410-5369			

Metal Halide Lamps

PowerStar® High Intensity Metal Halide Lamps

OSRAM



HQI-TS Double Ended



HQI-E Elliptical



HQI-T Tubular

- Metal halide lamps that produce a crisp white light and distinguish themselves by their high luminous efficacy and excellent colour rendering
- Ideal for inside and outside display lighting, shops, supermarkets, hotels, car parks and stadia
- Replace like-for-like in lamp types and wattages
- Complete with a UV stop quartz jacket
- Colour temperatures are Warm White (WW), Neutral (N) and Daylight (D)

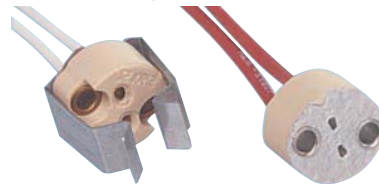
429734.262156

Watts	Cap	Length (mm)	Colour	Order Code	Price Each	
					1+	6+
HQI-TS Double Ended						
70W	RX7	114.2	N	152-8726		
150W	RX7s-24	132	WW	152-8727		
150W	RX7s-24	132	N	152-8728		
HQI-E Elliptical						
400W	ES(E40)	290	D	152-8729		
HQI-T Tubular						
250W	ES(E40)	225	D	152-8730		
400W	ES(E40)	275	D	152-8731		

Lampholders & Starters

Dichroic-GU5.3/GX5.3

PRO-ELEC



GU5.3
 H=22.2 (including clip), W=19.2, D=17
 2 mtg holes Dia 3.6 @ 12 ctrs
 Lead Length=140

GX5.3
 H=16.8, W=18.6, D=10.3
 2 mtg holes Dia 4 @ 12 ctrs
 Lead Length=140

Low voltage dichroic lamp holders designed to accommodate GU5.3 and GX5.3 style lamps. Max voltage 50V.

212012

Type	Order Code	Price Each		
		5+	50+	250+
GU5.3	530-669			
GX5.3	258-908			

Ceramic Lampholders

E27 (ES) and E14 (SES)

PRIME LIGHT



- Ceramic lampholders for E27 and E14 lamps
- Suitable for applications where high temperatures are produced
- Connection by means of screw connectors can be made from either above or from two sides
- Mounting holes provided

Fitting Dimensions (H x W) Mounting hole size
 E27 (ES) 44 x 30 5.2 x 4.2
 E14 (SES) 44 x 30 3.6

232437

Fitting	Order Code	Price Each		
		1+	10+	20+
ES	389-2219			
SES	389-2220			

IMPROVED BACK ORDER DELIVERY



Receive email updates with the exact status, due date and despatch information of all your back order items farnell.com

Lampholders & Starters - continued

334269

E27 Lampholder



- Manufactured from white porcelain
- Snap in or screw fixing
- Connection via screw terminal

Weight (g)	72
Current rating (A)	2
Length x Dia.	59 x 44.5
Voltage rating (V)	250
Temperature rating °C	210

334261

		Price Each		
Order Code		10+	100+	500+
E27	474-3064			

E27 Lampholder



- Snap in or screw fixing
 - Moulded from PPS
- | | |
|-----------------------|---------|
| Weight (g) | 17 |
| Current rating (A) | 2 |
| Length x Dia. | 46 x 40 |
| Voltage rating (V) | 250 |
| Temperature rating °C | 240 |

334263

		Price Each		
Order Code		10+	100+	500+
E27	474-3076			

BC Lampholder



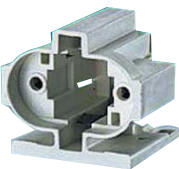
- Snap in or screw fixing
- Moulded housing

Weight (g)	13
Current rating (A)	2
Length x Dia.	32.2 x 37.8
Voltage rating (V)	250
Temperature rating °C	210

334264

		Price Each		
Order Code		10+	100+	500+
B22d	474-3088			

G23 Lampholder



- Manufactured in white PBT
- Horizontal screw fixing
- Wiring through the rear

Weight (g)	14
Current rating (A)	2
Length x Width x Depth	37.2 x 35 x 32.1
Voltage rating (V)	250
Temperature rating °C	140

334265

		Price Each		
Order Code		10+	100+	500+
G23	474-2989			

2G 11 Lampholder



- Manufactured from white PBT
- Screw fixing either horizontally or vertically

Weight (g)	14
Current rating (A)	2
Length x Width x Depth	47.5 x 37.5 x 18.5
Voltage rating (V)	250
Temperature rating °C	140

334266

		Price Each		
Order Code		10+	100+	500+
2G 11	474-2977			

G24 + GX 24 Lampholders



- Snap in or vertical screw in fixing
- Threaded barrel
- Manufactured in white PBT
- Available in 2 pin and 4 pin for various wattages

Weight (g)	20	Voltage rating (V)	250
Current rating (A)	2	Temperature rating °C	140
Length x Dia.	45.2 x 40		

Lamp Wattage	Order Code	Price Each		
		10+	100+	500+
4 Pin				
10-13W	474-3003			
18W	474-3015			
26/32W	474-3027			
42W	474-2990			
2 Pin				
10-13W	474-3039			
18W	474-3040			
26/32W	474-3052			

Fluorescent T5

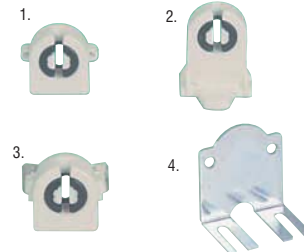


- Manufactured from white polycarbonate
- Phosphor bronze contacts
- 500V rated
- Operates up to 110°C

240097

		Price Each		
Order Multiple=10	Order Code	10+	100+	500+
Snap In	398-2919 ▲			
Push On	398-2920			

Fluorescent T8/T12



1. Screw (end mounting)
H=27, W=25
Mountings 2 holes Dia 3.2 @ 26 ctrs
2. Snap-fit (bottom mounting)
H=38.5, W=25
3. Snap-fit (end mounting)
H=27, W=25
4. Fixing bracket
H=43, W=35
2 fixing holes Dia 4.3 @ 24 ctrs

A range of snap-fit or screw fixing lampholders with a unique 'airpass-rotor' system, resulting in cooler running temperatures. A mild steel bracket is available for end mounting lampholders.

212015

		Price Each		
Order Multiple=10	Order Code	10+	100+	500+
Screw, end mounting	213-4628 ●			
Snap-fit, bottom mounting	530-610			
Snap-fit, end mounting	530-621			
Fixing bracket	530-633			

Fluorescent-Push on



T8 Dia. =29 T12 Dia. =40

Polycarbonate push-on lampholders accepting T8 or T12 fluorescent tubes. The lampholder is designed for electrical connection only when the lamp is supported by clips or other means.

212014

		Price Each		
Order Multiple=10	Order Code	10+	100+	500+
Type				
T8	530-645			
T12	530-657			

Fluorescent Lamp Starters



2 pin standard glow type fluorescent lamp starter designed to fit a wide range of single circuit fluorescent lighting units from 4 to 80 watts. 200 to 250 volts. The canister is manufactured from high impact material and incorporates a radio interference suppression capacitor.

Length (excluding pins) 35mm Pin pitch 12.7mm
Diameter 21.5mm

333960.262227

Order Code	Price Each		
	1+	5+	10+
469-7406			

Fluorescent Starters



- Radioactive-free glow switch starters for fluorescent lamps
- Secure, safe and fast lamp ignition on both L and LC systems according to IEC 60155
- Radio-interference suppression capacitor
- 200 way
- Voltage: 240V

450592

Watts	Order Code	Price Each		
		1+	25+	50+
4-65W	130-3427 ●			
70-125W	130-3428 ●			

Fluorescent Tube Starter Switches



- High quality two pin glowstarters
- Housed in high impact polycarbonate
- Solderless interior junctions give very high reliability
- Fitted with an internal radio interference suppression capacitor

Supply voltage 220V ac 50Hz Dimensions: L = 36.0 (40.3 including pins), Dia=21.5

212138

Tube Rating	Mfrs. List No.	Order Code	Price Each			
			5+	10+	50+	100+
65W and below	155/500	107-034				
70W - 125W	155/800	107-035				

Electronic Pulse Starter



- Suitable for most fluorescent fittings up to 125W
- Starter extends tube life by preheating the cathode heaters before attempting to strike
- Starter automatically shuts down if a tube fails, eliminating heat build up and tube flicker

Supply voltage 200-260V ac 50/60Hz
Body Polycarbonate body, Bakelite base

L=35 (40 incl. pins), Dia=21

211931

Order Code	Price Each			
	1+	10+	25+	50+
108-581				

Starter Holders



Snap fit
H=24.5, L=34, D=23 (inc. pins)
2 mtg holes Dia 4 @ 31 ctrs



Screw
H=26, L=40, D=12.5
2 mtg holes Dia 4 @ 31 ctrs

Fluorescent tube starter holders available with snap-fit or screw fixing. Both have push-wire terminals.

212011

Type	Order Code	Price Each		
		10+	100+	500+
Snap-fit	530-670			
Screw	530-682			